

PIG Epoxy Putty for Wet Surfaces

PIG Wet Surface Repair Putty is a specialty epoxy putty for repairs to damp, wet areas and underwater surfaces (either fresh or salt water). PIG Putty has a 25-minute work life. After mixing it will harden and form a tenacious bond. Functional cure occurs in 60 minutes.

Instructions

For best results use a detergent or degreaser to first clean the surface, then roughen the surface with a file or coarse sandpaper for best adhesion.


Mixing Directions


- Step 1** — Break or cut off desired amount.
- Step 2** — Twist and knead until uniform color is achieved — no streaks.
- Step 3** — Apply to surface to be repaired (within 10 minutes of mixing) and force into any cracks or holes.
- Step 4** — Remove excess before it hardens, preferably with a tool wet with water.


Tips

- Work the material forcefully into the surface and apply pressure until adhesion begins to take effect.
- Starts to harden 10 minutes after mixing. Repair should be in place before hardening starts.
- A smooth finish can be achieved by rubbing with wet finger or damp cloth before hardening begins.
- Can be drilled, filed, tapped, sanded and machined after an hour of curing (hardening).
- Wash hands thoroughly with soap and water after using.

Applications & Uses

 **Plumbing Repairs**
Sink traps, oil and water tanks, pipe joints, drain leaks, etc.

 **Underwater Repair**
Concrete swimming pools, tanks, etc.

 **Custom-Formed Gaskets**
For permanent sealing and bonding.

Instrucciones

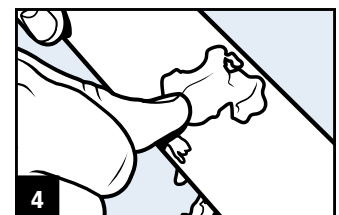
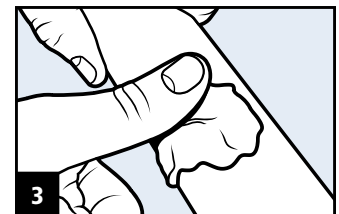
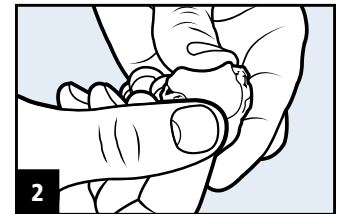
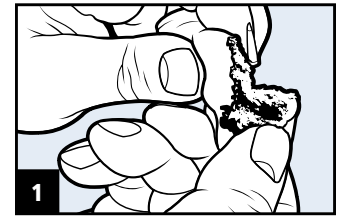
Para obtener mejores resultados, use un detergente o desengrasante para limpiar primero la superficie; luego raspela con una lima o lija gruesa para proporcionar la mayor reparación.

Instrucciones para el mezclado

- Paso 1** — Desprenda o corte la cantidad necesaria.
- Paso 2** — Retuerza y amase hasta lograr un color uniforme, sin vetas.
- Paso 3** — Aplique la mezcla a la superficie que debe repararse (en menos de 10 minutos después de mezclarla), y haga fuerza para que penetre dentro las grietas y agujeros.
- Paso 4** — Remueva el exceso antes de que endurezca, de preferencia con una herramienta mojada en agua.

Consejos

- Presione fuertemente a la superficie la masilla epóxica mezclada y mantenga la presión hasta que se efectúe la adhesión.
- Comienza a endurecer 10 minutos después del mezclarse. La reparación debe completarse antes de que comience a endurecer. Después de 25 minutos se endurecerá. El curado funcional ocurre a los 60 minutos.
- Para obtener un acabado suave, frótese con un dedo mojado o un trapo húmedo antes de que comience a endurecer.
- La masilla puede taladrarse, rellenarse, golpearse, lijarse o fresarse una hora después de su fijación (endurecimiento).
- Lávese siempre las manos con agua y jabón después de utilizarla.



Warning: Harmful if swallowed, eye irritant. Contains epoxy resins and amine. Keep away from children. If swallowed, call physician. For eyes, flush with water and call physician.

Advertencia: Este producto es peligroso si se lo ingiere si entra en contacto con los ojos. Contiene resinas y aminas. Mantén-gale fuera del alcance de los niños. En caso de ingestión consulte con un médico. Si entra en contacto con los ojos, lávelos con agua y consulte con un médico.

Storage — Best conditions are at room temperature. Freezing, humidity, and high temperatures will not affect performance of unused putty. If frozen, warm for a few minutes first for easier mixing.

Shelf Life — Tests have shown this product lasts 24 months when stored at room temperature in its original sealed tube.

Performance Data

Shelf Stability at 75°F (24°C), minimum 24 months
Shore D Hardness at Full Cure (24 hrs) 70
Lap Shear Tensile Strength
On Steel (1" x 1" x 1/16") 900 lbs (6.2 MPa)
On Fiberglass (1" x 1" x 1/16") 500 lbs (3.5 MPa)
Compressive Strength 8,000 psi (55 MPa)
Density 15.8 lb/gal, 1.9 gm/cm³ Shrinkage <1%

Non-Volatile Content 100%
Electrical Resistance 30,000 megohms
Dielectric Strength 300 volts/mil
Upper Temperature Limits
Continuous . . . 250°F (121°C)
Intermittent . . . 300°F (149°C)
Chemical Resistance — Resistant to hydrocarbons, ketones, alcohols, esters, halocarbons, aqueous salt solutions and dilute acids and bases.



New Pig

One Pork Avenue
Tipton, PA 16684-0304

newpig.com

North America: 1-800-468-4647

Europe: +31 (0)76 596 92 50

UK: 0800 919 900

Outside North America: +1-814-684-0101

PIG, PIG logo are registered trademarks in USA and other countries. See tm.newpig.com

350430