

PIG Waste Compactor Manual

Model Numbers: DRM652/7848 – Electric Waste Compactor
DRM653/7849 – Electric Waste Compactor with Waste Pump
DRM654/7850 – Air Waste Compactor
DRM655/7851 – Spark-Resistant Waste Compactor
DRM656/7852 – Spark-Resistant Waste Compactor with Waste Pump
DRM345/7818 – Air Waste Pump Kit



DRM653
Electric Compactor
with Waste Pump



New Pig

One Pork Avenue
Tipton, PA 16684-0304

newpig.com

North America: **1-800-468-4647**

Europe: **+31 (0)76 596 92 50**

UK: **0800 919 900**

Outside North America: **+1-814-684-0101**

PIG, PIG logo are registered trademarks in USA and other countries. See tm.newpig.com

330603

Table of Contents

Introduction Page 3

Section I — Electric Compactors

1 Setup Instructions Page 4
2 Operating Instructions Page 5
3 Product Data SheetsPages 6–7
4 Exploded View for DRM652 & DRM653 Page 8
5 Parts List for DRM652 & DRM653Pages 9–11
6 Electrical Schematic for DRM652 Page 12
7 Electrical Schematic for DRM653 Page 13
8 Preventive Maintenance Page 14
9 Troubleshooting Guide Page 14

Section II — Air Compactors

1 Setup Instructions Page 15
2 Operating Instructions Page 16
3 Product Data SheetsPages 17–19
4 Exploded View for DRM654, DRM655 & DRM656 Page 20
5 Parts List for DRM654, DRM655 & DRM656Pages 21–23
6 Air Schematics for DRM654, DRM655 & DRM656 Page 24
7 Preventive Maintenance Page 25
8 Troubleshooting Guide Page 25

Section III — Waste Pump

1 Optional Waste PumpPages 26–27

Section IV — Limited Warranty

1 Service and Limited Warranty Page 28

Introduction

PIG Waste Compactor

Waste disposal is one of the most challenging issues industries face today. The average disposal cost for a 55-gallon drum can range from \$200–\$700. Further complicating the disposal picture is the shrinking number of active landfills. As a result, companies are pursuing innovative ways to reduce their disposal costs.

In 1994, New Pig developed the PIG Waste Compactor to compact absorbents and other soft wastes. The Compactor significantly reduced waste to a fraction of its original volume resulting in dramatically lower disposal costs. The original pump kit captures segregated liquids for reuse or recycling.

To determine just how much money a PIG Waste Compactor could save you, we conducted a research study. Our results found that 100% of users significantly reduced the number of drums they sent out for disposal. Compaction ratios ranged from a high of 6:1 to a low of 2:1.

New Pig's Product Development Team has designed the following features to ensure safe operation: an improved ram guard completely encloses the top of the drum, and the drum doors interlock to prevent access during operation.

DISCLAIMER: Wringing or compacting waste may be considered "treatment" by RCRA regulations. You may require a permit to use this product. Please consult with your state EPA waste management office prior to use.

Use your PIG Waste Compactor to crush:

- Absorbents
- Rags
- Plastic
- Paper
- Cardboard
- Paper filters
- Other soft materials

(not recommended for wood, metal or other hard materials)

Section I

Electric Compactors

1 Setup Instructions

1. Remove PIG Waste Compactor from pallet and place on floor.
2. If desired, permanently mount the compactor to the floor using the predrilled holes in the base. Up to ½" floor anchors can be used. Floor anchoring not required for operation (anchors not included).
3. Power source required: 120 Volt AC with 15 amp breaker.
4. Wire unit to terminal block inside closure through hole marked 120 Volt AC 15 amp as shown in schematic.
(**Note:** Wiring should be performed by a qualified electrician.)

2 Operating Instructions

Always wear the proper safety equipment when operating this unit.



1. Open safety cover.



2. Tilt unit back with drum in place to facilitate loading.



3. Return to upright locked position and close safety cover.



4. Move directional lever on electric pump to the down position and depress operation button to compact. Continue to compact until the pump stops (reaching maximum pressure).



5. To raise the ram, release button to stop, move directional lever on electric pump to the up position and depress operation button.

Note: Compactor will not operate if the unit is not in the upright position or safety cover is not closed.

3 Product Data Sheet

PIG Electric Compactor Item# DRM652/7848

DESCRIPTION

An electric operated compaction device used to increase the amount of waste that can fit into a disposal drum.

Packaging: 1 Box/Pallet

Color: Black/Yellow

Weight: 506 lbs.

Per Pallet: 1

Dimensions:

Overall Dimensions — 67 1/8" H x 31 1/2" W x 38" D

Ram Diameter — 22" O.D.

Hand Remote — Cord Length: 6'

Composition: Hot rolled steel, structural c-channel and aluminum

Power Supply: 120 Vac

Amp Draw: 10 amps under maximum load

Motor: 1/2 HP - 3450 RPM

Elec. Connection: Power supply connection to be provided by customer

Average Cycle Time: 1 Minute

FEATURES/BENEFITS

- Ram Guard — Covers top of drum/prevents any possible hand injuries. Microswitch prevents use of compactor until cover is shut.
- 120 VAC/10 AMP hydraulic pump — Easy power supply is readily available.
- 12,000 lbs. of downward compaction force — High compaction capacity.
- Compacts as many as 6 drums into 1 — Reduces waste stream and disposal costs.
- One minute cycle time — Compacts quickly and saves time.
- Hand Remote Control — Easy operation.
- Tilt-back frame — Allows drum to be filled with materials without having to move drum away from compactor.
- Safety interlock — Won't run unless the unit is in the locked upright position.
- Automatic shutoff — Unit will only run when the button is depressed.
- Raised steel base plate under drum — Prevents the bottom of the drum from bowing under the pressure of compaction.
- View port on ram guard — Allows the user to safely view what is happening in the drum without opening the lid.
- Mounting holes in the base plate — Allows permanent mounting to floor.
- Drain holes in the ram plate — Allows liquid collected on the top of the ram plate to drain back into the drum when the plate is lifted.

APPLICATIONS

The PIG Waste Compactor is designed to assist in waste minimization programs by allowing the user to fit more soft waste (absorbents, rags, paper filters and trash) in each disposal drum. Designed to compact.

* The unit should NOT be used to crush metal, steel drums, wood, other hard materials or flammables.

3 Product Data Sheet

PIG Electric Compactor with Waste Pump

Item# DRM653/7849

DESCRIPTION

An electric operated compaction device used to increase the amount of waste that can fit into a disposal drum. Includes a waste pump that allows removal of free-standing liquids from the compaction process.

Packaging: 1 Box/Pallet

Color: Black/Yellow

Weight: 524 lbs.

Per Pallet: 1

Dimensions:

Overall Dimensions — 67 1/8" H x 31 1/2" W x 38" D

Ram Diameter — 22" O.D.

Hand Remote — Cord Length: 6'

Waste Pump Hoses — Intake/Outlet: 5/8" I.D. x 7'

Composition: Hot rolled steel, aluminum and structural C-Channel

Power Supply: 120 Vac

Amp Draw: 10 amps under maximum load

Motor: 1/2 HP - 3450 RPM

Elec. Connection: Power supply connection to be provided by customer

Average Cycle Time: 1 Minute

FEATURES/BENEFITS

- Ram Guard — Covers top of drum/prevents any possible hand injuries. Microswitch prevents use of compactor until cover is shut.
- 120 VAC/10 AMP hydraulic pump — Easy power supply is readily available.
- 12,000 lbs. of downward compaction force — High compaction capacity.
- Self-priming 3 to 4 gal/min. diaphragm waste pump — High output pump that can run dry without damage.
- 20 mesh easy clean filter system — Keeps large particles from damaging and clogging pump.
- Corrosion- and chemical-resistant — No metal parts come in contact with liquids being pumped.
- Tilt-back frame — Allows drum to be filled with materials without having to move drum away from compactor.
- Safety interlock — Won't run unless the unit is in the locked upright position.
- One minute cycle time — Compacts quickly and saves time.
- Compacts as many as 6 drums into 1 — Reduces waste stream and disposal costs.
- Hand Remote Control — Easy operation.
- Automatic shutoff — Unit will only run when the button is depressed.
- Drain holes in the ram plate — Allows liquid collected on the top of the ram plate to drain back into the drum when the plate is lifted.
- Raised steel base plate under drum — Prevents the bottom of the drum from bowing under the pressure of compaction.
- Mounting holes in the base plate — Allows permanent mounting to floor.
- View port on ram guard — Allows the user to safely view what is happening in the drum without opening the lid.

APPLICATIONS

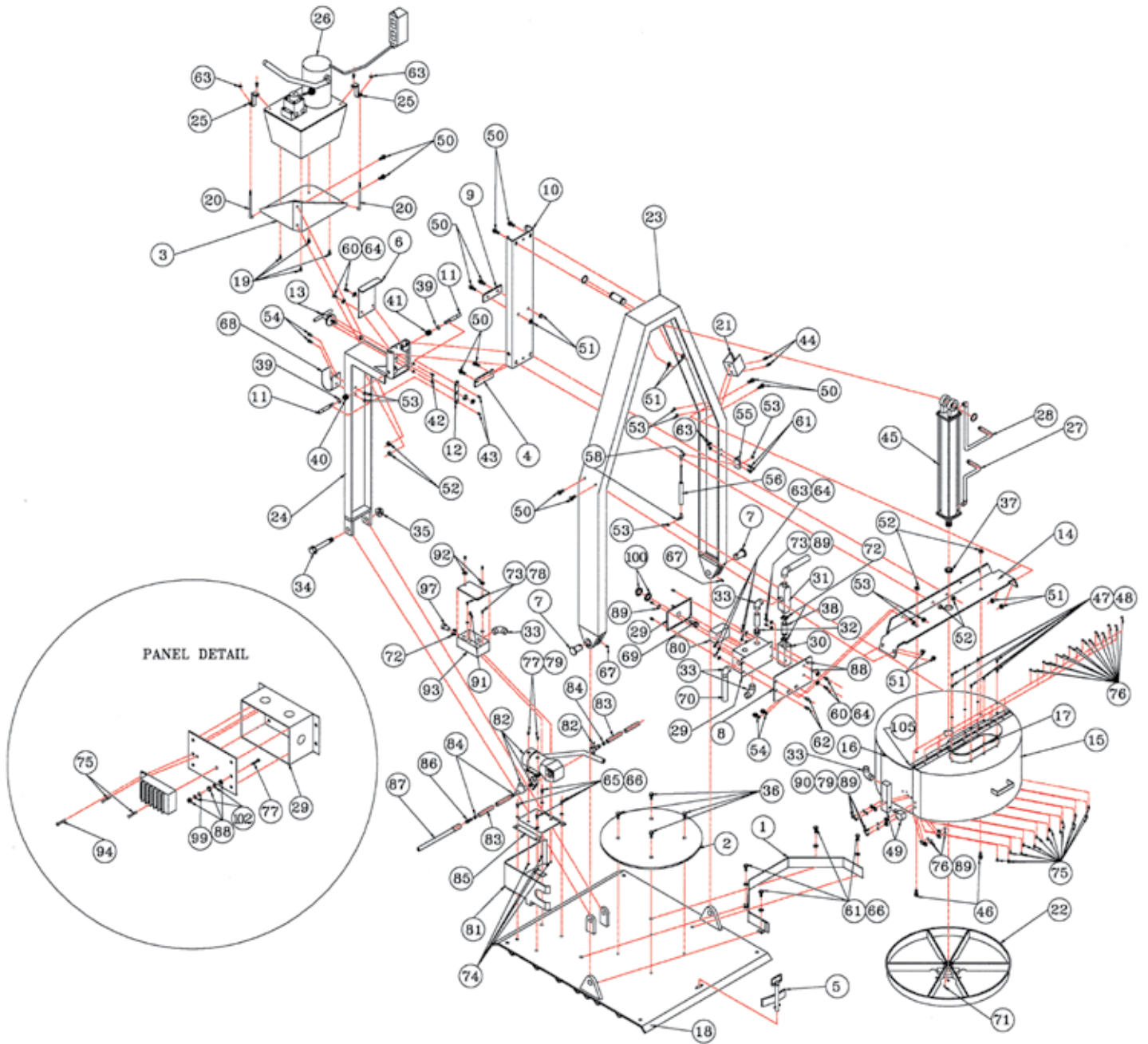
The PIG Waste Compactor is designed to assist in waste minimization programs by allowing the user to fit more soft waste (absorbents, rags, paper filters and trash) in each disposal drum. Designed to compact.

* The unit should NOT be used to crush metal, steel drums, wood, other hard materials or flammables.

4 Exploded View

Electric Operated Compactors Item# DRM652 and DRM653

Revision: 4
1/26/07



5 Parts List

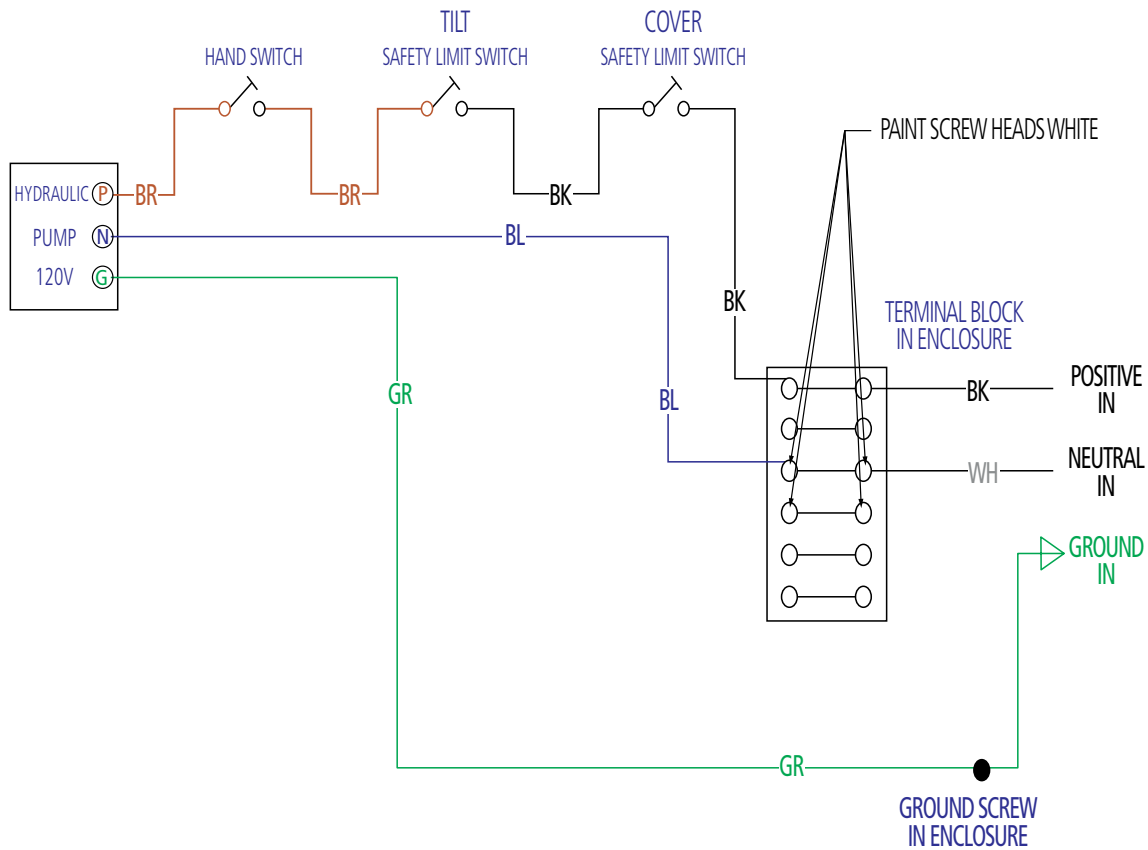
Electric Compactor(s) Parts List

Item No.	Part No.	Description	DRM652 Quantity	DRM653 Quantity
1	150123A	Base Plate Locating Ring	1	1
2	150123-7	Steel Round Disc	1	1
3	600018	Pump Mount Plate	1	1
4	150134	Bottom Stop Plate	1	1
5	150136	Locating Pin	1	1
6	150138	Latch Cover	1	1
7	150141	Hinge Pin	2	2
8	600017	Electric Mounting Box	1	1
9	150137	Top Stop Plate	1	1
10	150139A	Tilt Guide	1	1
11	150142	Latch Pin	2	2
12	150143	Pivot Bar	1	1
13	DRM316A1-1	Handle Assembly	1	1
14	150122	Center Support	1	1
15	600143A	Front Dome Cover Assembly	1	1
16	600143B	Rear Dome Cover Assembly	1	1
17	150132-4	Plexiglass Sight Window	1	1
18	150123	Base Plate	1	1
19	F1111	#14 x 1" HWH Type B T/Screw	4	4
20	600018-4	J-Bolt	2	2
21	600019	Pendant Holder	1	1
22	600087	Aluminum Dome Plate	1	1
23	150125	A-Frame Assembly	1	1
24	150140	Rear Pivot Support	1	1
25	600018-5	Electric Pump Clamp	2	2
26	P1008	Electric Hydraulic Pump w/Hand Remote	1	1
27	P1014	29.5" Hydraulic Hose w/Fittings	1	1
28	P1013	38.5" Hydraulic Hose w/Fittings	1	1
29	P1012	Electric Enclosure Box	1	1
30	P1010	Limit Switch	1	1
31	P1016	Conduit Fitting	1	1
32	P1017	Straight Connector	1	1
33	P1020	90 Degree Connector	3	5
34	F1654	¾" – 10UNC x 6" Grade 5 Hex Head Cap Screw	1	1
35	F1655	¾" – 10UNC Nylon SelfLocking Hex Nut	1	1
36	F1216	¼" – 20 UNC x 1" Flat-Countersink Allen Head	4	4
37	155186	Garlock Bushing	1	1
38	F1966	½" x 2 ½" Galvanized Pipe Nipple	1	1
39	DRM316A1-2	Clip Pin	2	2
40	DRM316A1-5	0.06" Heavy Compression Spring	1	1

Item No.	Part No.	Description	DRM652 Quantity	DRM653 Quantity
41	P1105	0.055" Compression Spring	1	1
42	F1048	#10-32UNF x 3/8" Button Head Screw	2	2
43	F1204	1/4" x 1/4" with #10-32 UNF Thread	2	2
44	F1347	5/16" - 18UNC x 3/4" Carriage Bolt	2	2
45	P1015	Hydraulic Cylinder (18" CRSS)	1	1
46	F1468	3/8" - 16UNC x 3/4" Carriage Bolt	2	2
47	F1922	3/8" Snap Binding Screw Post	8	8
48	F1923	Nylon Flat Washer	8	8
49	P1235	Safety Interlock Switch	1	1
50	F1425	3/8" - 16UNC x 1" Grade 8 Flange Bolt	12	12
51	F1426	3/8" - 16UNC Grade 8 Flange Nut	8	8
52	F1421	3/8" - 16UNC Hex Whiz Lock Nut	6	6
53	F1339	5/16" - 18UNC Hex Whiz Lock Nut	6	8
54	F1338	5/16" - 18UNC x 3/4" Hex Flange Whiz Lock Bolt	2	4
55	600143-6	Shock Mounting Bracket	1	1
56	P1151	Fixed Force Gas Spring	1	1
58	P1154	Gas Spring Ball Stud	2	2
60	F1159	1/4" - 20UNC x 1/2" Hex Head Cap Screw	4	4
61	F1199	1/4" - 20UNC x 3/4" Grade 5 Hex Head Cap Screw	6	6
62	F1214	1/4" - 20UNC x 1/2" 82 Deg. Socket Flat Cap Screw	2	2
63	F1152	1/4" - 20UNC Center Hex Head Lock Nut	6	6
64	F1200	1/4" Star Lock Washer	8	8
65	F1215	1/4" - 20UNC x 1 1/2" Grade 5 Hex Head Cap Screw	0	4
66	F1197	1/4" Lock Washer	4	8
67	F1158	1/4" - 20UNC x 1/2" Allen Head Set Screw	2	2
68	150146	Hose Bracket	0	1
69	P1018	Knob Selector Switch	0	1
70	P1011	Extraflex Conduit	1.5 ft	6.5 ft
71	F1191	1/4" - 20UNC Brass Tip Hex Socket Set Screw	1	1
72	P1037	1/2" Conduit Lock Nut	2	3
73	F1719	#10-24UNUNC x 1 1/2" Slotted Head Machine Screw	2	4
74	F1722	#10-24 Nylock Nut	6	6
75	F1039	#8-32UNC x 1/2" Slotted Head Machine Screw	15	15
76	F1038	#8-32UNC Nylon Self-Locking Hex Head Nut	15	15
77	F1720	#10-24UNF x 1" Slotted Head Machine Screw	1	3
78	P1126	Rubber Bumper	0	2
79	F1054	#10 Flat Washer	4	6
80	P1025	Contact Block	0	1
81	600021	Electric Pump Guard	0	1
82	P1009	Shur Flow Pump, w/Filter & w/Fittings	0	1
83	P1085	1/2" I.D. Reinforced PVC Tubing	0	14 ft
84	F1949	5/8" Hose Clamp	0	3
85	600020	Base Pump Mounting Plate	0	1
86	F1945	1/2" Pipe x 1/2" Hose Barb	0	1
87	DRM345-9	Wand	0	1
88	F1053	#10-24UNC Star Lock Hex Head Nut	5	5
89	F1704	Internal Star Lock Washer	12	12

Item No.	Part No.	Description	DRM652 Quantity	DRM653 Quantity
90	F1036	#8-32UNC x 1 1/2" Slotted Head Machine Screw	4	4
91	F1057	#10-32UNF x 3/8" Hex Head Green Ground Screw	0	1
92	F1035	#8 External Star Lock Washer	0	2
93	P1024	4 x 2 Electrical Box	0	1
94	F1069	#10-32UNF x 3/8" Slotted Head Machine Screw	0	1
97	P1127	Cord Connector	0	1
99	P1141	#10 Cup Washer	1	1
100	P1019	Closing Button	1	0
101	P1050	13/16" Nylon Finishing Plug	2	1
102	F1983	Flat Washer	1	2
103	P1234	Metric to NPT Thread Adapter	1	1
104	P1236	Safety Interlock Switch Key	1	1
105	600143-10	Dome Cover Hinge	1	1
106	600143-15	Safety Interlock Switch Key Bracket	1	1

6 Electrical Schematic for DRM652



PLEASE NOTE: ALL WIRE COLORS ARE STANDARD COLOR CODES AS STATED, EXCEPT ON THE HYDRAULIC PUMP.

POSITIVE – BROWN WIRE

NEUTRAL – BLUE WIRE

WIRE COLOR CODES

POSITIVE – BLACK WIRE

NEUTRAL – WHITE WIRE

GROUND – GREEN WIRE

ABBREVIATIONS FOR WIRE COLOR CODES

BLACK WIRE = BK

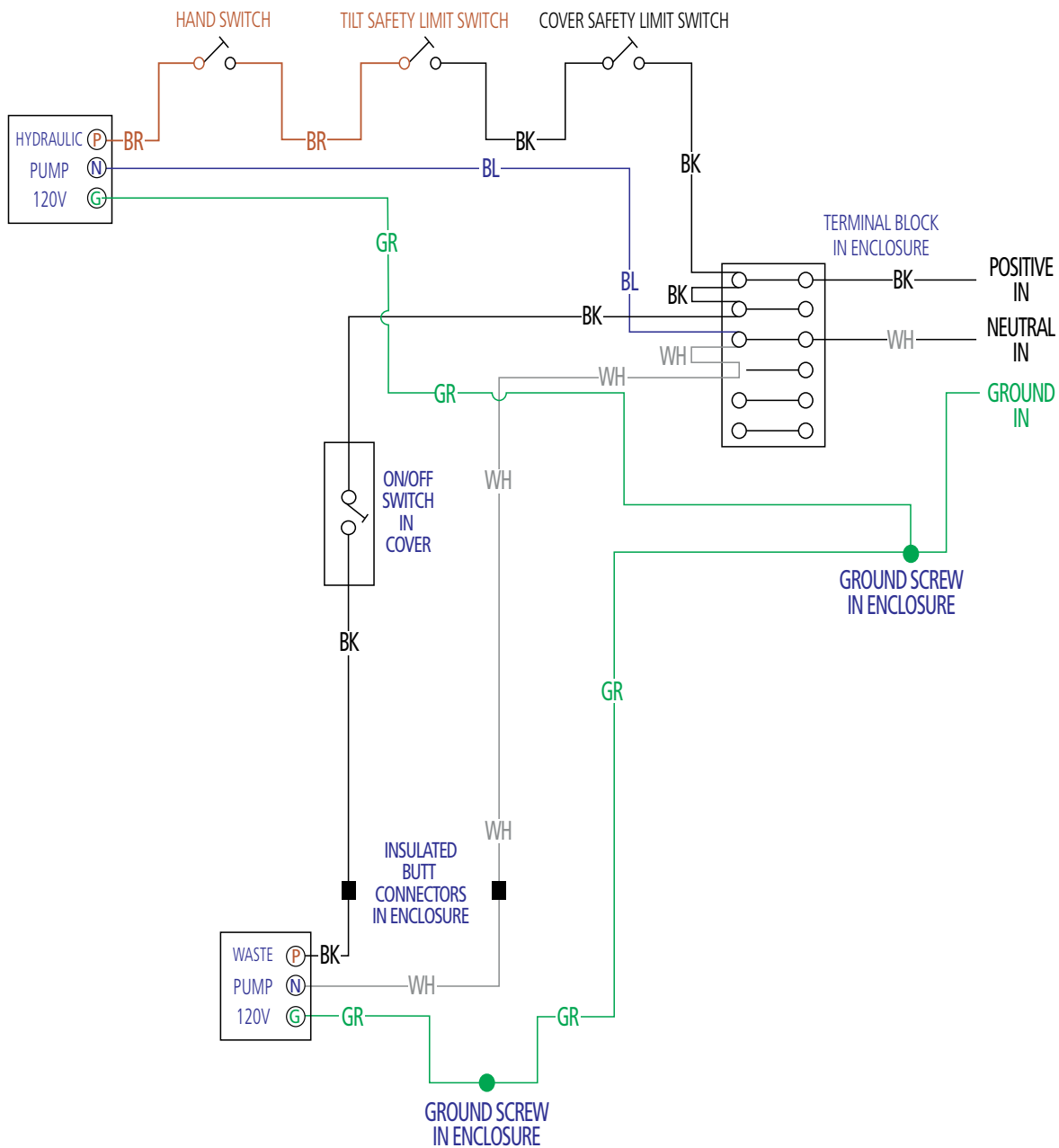
BLUE WIRE = BL

BROWN WIRE = BR

GREEN WIRE = GR

WHITE WIRE = WH

7 Electrical Schematic for DRM653



PLEASE NOTE: ALL WIRES ARE THE STANDARD COLOR CODES AS STATED, EXCEPT ON THE HYDRAULIC PUMP.

POSITIVE – BROWN WIRE
 NEUTRAL – BLUE WIRE

WIRE COLOR CODES	
POSITIVE	– BLACK WIRE
NEUTRAL	– WHITE WIRE
GROUND	– GREEN WIRE

ABBREVIATIONS FOR WIRE COLOR CODES

BLACK WIRE	= BK
BLUE WIRE	= BL
BROWN WIRE	= BR
GREEN WIRE	= GR
WHITE WIRE	= WH

8 Preventive Maintenance

1. Check hydraulic oil level. Should be within approximately 1" from top of filler hole. Use a general-purpose mediumweight hydraulic fluid.
2. Check for loose nuts, bolts and pins.
3. Check ram plate to ensure that it is secured to the hydraulic cylinder shaft. Run unit empty to full extension of the hydraulic cylinder. Allow the unit to build full pressure, this will lock the cylinder in place so that it can be tightened or removed. Caution — Loosen set screw before attempting to tighten or remove ram plate. Tighten set screw after adjusting.

9 Troubleshooting Guide

Hydraulic pump runs, but ram will not move.

- Hydraulic fluid is low — Use a mediumweight hydraulic fluid and fill to within 1" of the top of filler hole with the ram in the up position.
- Up and down lever is not fully engaged — Make sure lever is moved completely to the up or down position.
- Breather cap on the hydraulic pump is closed — Open cap.

Waste pump runs, but will not pump.

- Check hoses for obstructions.
- Check filter screen and clean.

Hydraulic pump will not run.

- Safety cover micro is not fully engaged — Make sure it is fully closed.
- Safety cover micro is out of alignment — Adjust micro so it is fully engaged when cover is in the closed position.
- Tilt micro is not fully engaged — Make sure the compactor is in the upright position and the locking pins are fully extended and depressing the micro.
- Tilt micro is out of alignment — Adjust micro so it is fully depressed when compactor is in the upright position and the locking pins are fully extended.
- Check power supply to the unit.

Loose Ram Plate

- Ram plate is loose — Run the compactor empty to full extension of hydraulic cylinder. Allow unit to build full pressure, this will lock the cylinder in place so it can be tightened or removed.

CAUTION: Loosen set screw before attempting to tighten or remove ram plate.

Section II

Air Compactors

1 Setup Instructions

1. Remove PIG Waste Compactor from pallet and place on floor.
2. If desired, permanently mount the compactor to the floor using the predrilled holes in the base. Up to 1/2" floor anchors can be used. Floor anchoring not required for operation (anchors not included).
3. Remove the yellow plug in the top of the air pump with wrench. Replace with the attached black vent cap. Do not over-tighten the vent cap with wrench.
4. Remove the pipe plug from the air intake pipe located on the back of the unit, attached to the side of the Rear Pivot (Part #19 on exploded view).
5. Screw a male air connect chuck into the 3/8" pipe.
6. Attach air chuck and air line (both not included) to male air connect.
7. Ground unit to earth ground with provided grounding wire.
Note: A ground is provided with DRM654 and DRM655.

Note: An in-line air filter (included) and oiler (not included) should be used with this unit.

2 Operating Instructions

Always wear the proper safety equipment when operating this unit.



1. Open safety cover.



2. Tilt unit back with drum in place to facilitate loading.



3. Return to upright locked position and close safety cover.



4. Move directional lever on air hydraulic pump to the down position and depress operation button to compact. Continue to compact until the pump stops (reaching maximum pressure).



5. To raise the ram, release button to stop, move directional lever on air hydraulic pump to the up position and depress operation button.

Note: Compactor will not operate if the unit is not in the upright position or safety cover is not closed.

3 Product Data Sheet

PIG Electric Compactor Item# DRM654/7850

DESCRIPTION

An air-driven hydraulic compaction device used to increase the amount of waste that can fit into a disposal drum.

Packaging: 1 Box/Pallet

Color: Black/Yellow

Weight: 506 lbs.

Per Pallet: 1

Dimensions:

Overall Dimensions — 67 $\frac{1}{8}$ " H x 31 $\frac{1}{2}$ " W x 38" D

Ram Diameter — 22" O.D.

Composition: Hot rolled steel, structural c-channel and aluminum

Minimum Air Required: 80 psi, 10 cfm air

Average Cycle Time*: 2 minutes (1 minute up, 1 minute down)

* May vary according to air pressure.

FEATURES/BENEFITS

- Compacts as many as 6 drums into 1 — Reduces waste stream and disposal costs.
- Air-driven hydraulic pump (preset at 2,500 psi) — Provides 12,000 lbs. of downward force.
- Ram Guard — Covers top of drum/prevents any possible hand injuries. Microswitch prevents use of compactor until cover is shut.
- Manually operated on/off air valve — Unit will not operate unless the valve is depressed. When valve is released, compactor shuts off.
- Tilt-back frame — Allows drum to be filled with materials without having to move drum away from compactor.
- Safety interlock — Won't run unless the unit is in the locked upright position.
- Raised steel base plate under drum — Prevents the bottom of the drum from bowing under the pressure of compaction.
- View port on ram guard — Allows the user to safely view what is happening in the drum without opening the lid.
- Mounting holes in the base plate — Allows permanent mounting to floor.
- Drain holes in the ram plate — Allows liquid collected on the top of the ram plate to drain back into the drum when the plate is lifted.
- Retaining pin — Keeps drum located and secure underneath ram.
- Includes air line filter — Removes water from air line and extends life of pump.
- Waste pump available (DRM345) — Allows liquids to be pumped from waste drum.

APPLICATIONS

The PIG Waste Compactor is designed to assist in waste minimization programs by allowing the user to fit more soft waste (absorbents, rags, paper filters and trash) in each disposal drum. Designed to compact.

* The unit should NOT be used to crush metal, steel drums, wood, other hard materials or flammables.

3 Product Data Sheet

PIG Spark-Resistant Compactor Item# DRM655/7851

DESCRIPTION

An air-operated, spark-resistant compaction device used to reduce waste to a fraction of its original volume.

Packaging: 1 Box/Pallet

Color: Black/Silver

Weight: 486 lbs.

Per Pallet: 1

Dimensions:

Overall Dimensions — 31½" W x 67⅞" H x 38" D

Composition:

Aluminum: Ram, Base, Retaining Pin, Ram Guard, Surround Shield

Frame: Hot Rolled Steel

Minimum Air Required: 80 psi, 10 cfm Air

Average Cycle Time*: 2 minutes (1 minute down, 1 minute up)

* May vary according to air pressure

FEATURES/BENEFITS

- All components that a drum may come in contact with are made of aluminum with air-driven hydraulics — Spark-resistant.
- Compacts up to 6 to 1 (depending on material) — Reduces disposal costs by having fewer drums to dispose of.
- Use with absorbents, rags, paper, or anything that is "soft" rather than "hard" and non-metallic — Minimizes waste.
- Air-driven hydraulic pump (preset at 2,500 psi) — Provides 12,000 lbs. of downward force.
- Ram Guard — Covers the top of drum/prevents any possible hand injuries. Microswitch prevents use of compactor until cover is shut.
- Safety interlock — Compactor will not run unless frame is locked into the upright position.
- Manually operated on/off air valve — Unit will not operate unless the valve is depressed. When valve is released, compactor shuts off.
- Tilt-back frame — Allows drum to be filled with materials without having to move drum away from compactor.
- Raised aluminum base plate — Centers the drum under the ram, plus it prevents the bottom of the drum from bowing under compaction force.
- View port on ram guard — Allows the user to view compacting ram and any liquids that may accumulate.
- Holes drilled in base plate — Allows unit to be mounted to floor. Floor anchoring is not required.
- Drain holes in ram plate — Allows liquids to rise to the top when compacting.
- Retaining pin — Keeps drum located and secure underneath ram.
- Compactor includes an attached grounding wire — Allows user to ground unit for added safety.
- Includes air line filter — Removes water from air line and extends the life of the pump.

APPLICATIONS

To assist in waste minimization, the PIG Waste Compactor allows the user to fit more soft waste in each disposal drum.

****IMPORTANT:** It is the user's responsibility to ensure waste entered into drum will not generate a spark by itself, or by coming in contact with the drum.

3 Product Data Sheet

PIG Spark-Resistant Compactor with Waste Pump

Item# DRM655/7851

DESCRIPTION

An air-operated, spark-resistant compaction device used to reduce waste to a fraction of its original volume.

Packaging: 1 Box/Pallet

Color: Black/Silver

Weight: 524 lbs.

Per Pallet: 1

Dimensions:

Overall — 31½" W x 67⅞" H x 38" D

Composition:

Compactor: See DRM655. PUMP: Wand; Aluminum, Hose; Static

Dissipative. Wetted Pump Parts: Polypropylene, SS and Teflon

Minimum Air Required: 80 psi, 10 cfm Air

Average Cycle Time*: 2 minutes (1 minute down and 1 minute up)

* May vary according to air pressure

Pump Wetted Parts: SS-Filled Acetal

Center Body: Polypropylene

Check Valve: Stainless Steel

Diaphragm O-Ring: Teflon

Pump Output: 13 GPM (self priming)

FEATURES/BENEFITS

- All components that a drum may come in contact with are made of aluminum with air-driven hydraulics — Spark-resistant.
- Compacts up to 6 to 1 (depending on material) — Reduces disposal costs by having fewer drums to dispose of.
- Use with absorbents, rags, paper, or anything that is "soft" rather than "hard" and non-metallic — Minimizes waste.
- Air-driven hydraulic pump (preset at 2,500 psi) — Provides 12,000 lbs. of downward force.
- Ram guard — Covers the top of drum/prevents any possible hand injuries. Microswitch prevents use of compactor until cover is shut.
- Safety interlock — Compactor will not run unless frame is locked into the upright position.
- Manually operated on/off air valve — Unit will not operate unless the valve is depressed. When valve is released compactor shuts off.
- Tilt-back frame — Allows drum to be filled with materials without having to move drum away from compactor.
- Raised aluminum base plate — Centers the drum under the ram, plus it prevents the bottom of the drum from bowing under compaction force.
- View port on ram guard — Allows the user to view compacting ram and any liquids that may accumulate.
- Holes drilled in base plate — Allows unit to be mounted to floor. Floor anchoring is not required.
- Drain holes in ram plate — Allows liquids to rise to the top when compacting.
- Retaining pin — Keeps drum located and secure underneath ram.
- Compactor includes an attached grounding wire — Allows user to ground unit for added safety.
- Includes air line filter — Removes water from air line and extends the life of the pump.
- Factory-installed non-metallic groundable diaphragm pump-out kit — Static buildup bleed-off, provides superior compatibility with harsh industrial solvents and other volatile materials.

APPLICATIONS

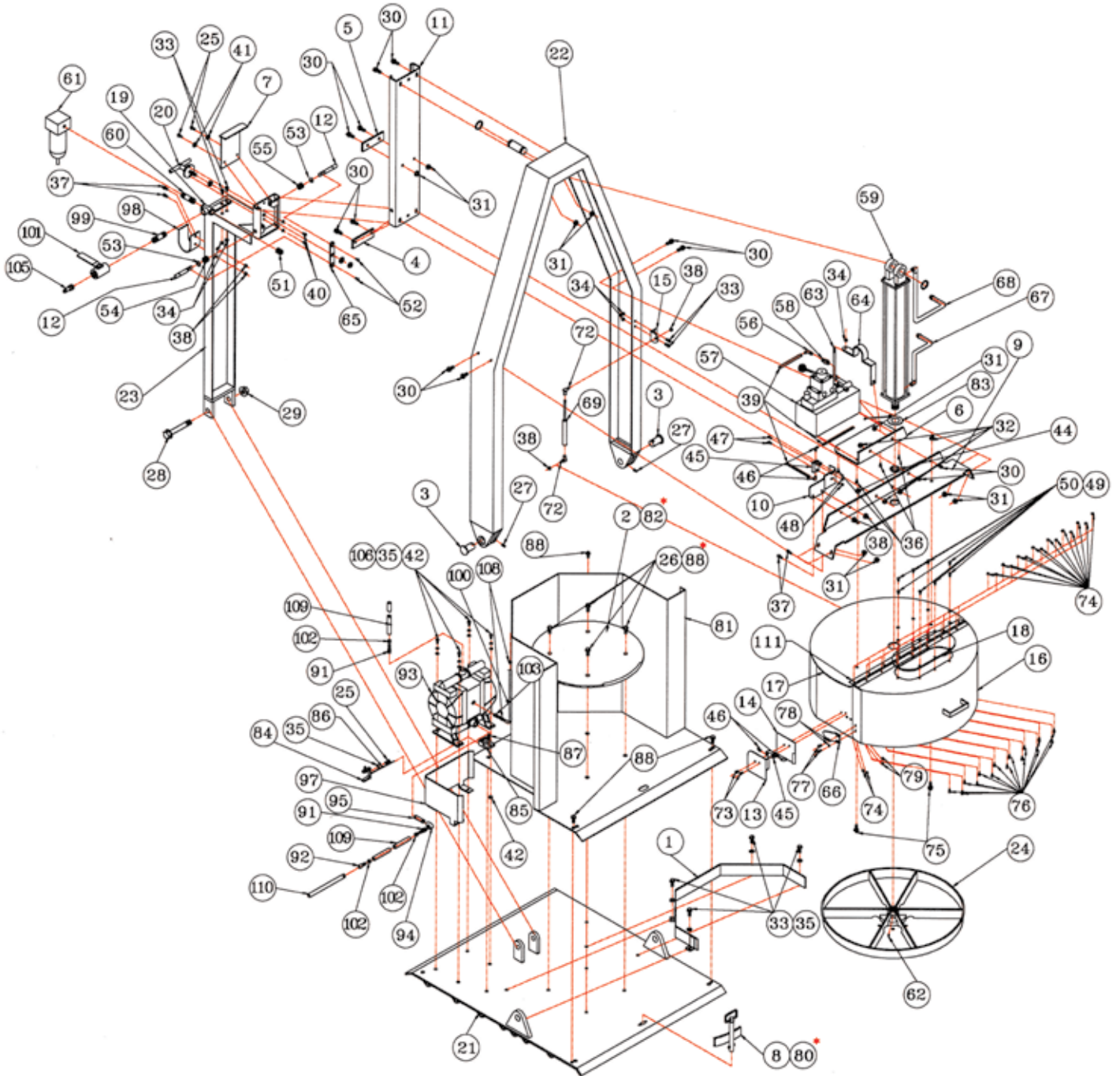
To assist in waste minimization, the PIG Waste Compactor allows the user to fit more soft waste in each disposal drum.

****IMPORTANT:** It is the user's responsibility to ensure waste entered into drum will not generate a spark by itself, or by coming in contact with the drum.

4 Exploded View

Air Operated Compactors Item# DRM654, DRM655 and DRM656

Revision: 3
1/26/07



5 Parts List

Air Operated Compactor(s) Parts List

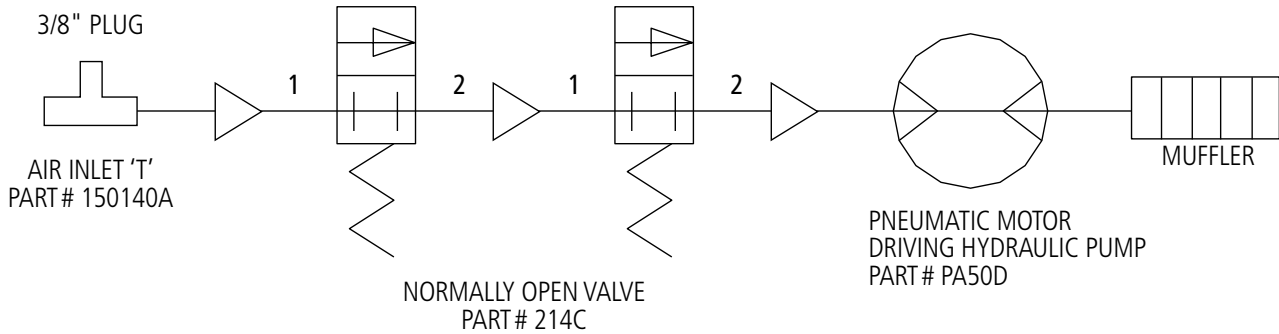
Item No.	Part No.	Description	DRM654 Quantity	DRM655 Quantity	DRM656 Quantity
1	150123A	Base Plate Locating Ring	1	0	0
2	150123-7	Steel Round Disc	1	0	0
3	150141	Hinge Pin	2	2	2
4	150134	Bottom Stop Plate	1	1	1
5	150137	Top Stop Plate	1	1	1
6	150135	Pump Mount Bracket	1	1	1
7	150138	Latch Cover	1	1	1
8	150136	Locating Pin	1	0	0
9	150122	Center Support	1	1	1
10	150133	Micro Switch Mount	1	1	1
11	150139A	Tilt Guide	1	1	1
12	150142	Latch Pin	2	2	2
13	600150-2	Outer Micro Switch Guide	1	1	1
14	600150-3	Inner Micro Switch Guide	1	1	1
15	600143-6	Shock Mounting Bracket	1	1	1
16	600143A	Front Dome Cover Assembly	1	1	1
17	600143B	Rear Dome Cover Assembly	1	1	1
18	150132-4	Plexiglass Sight Window	1	1	1
19	150140A	Air Fitting Assembly	1	1	1
20	DRM316A1-1	Handle Assembly	1	1	1
21	150123	Base Plate	1	1	1
22	150125	A-Frame Assembly	1	1	1
23	150140	Rear Pivot Support	1	1	1
24	600087	Aluminum Dome Plate	1	1	1
25	F1159	¼" - 20UNC x ½" Hex Head Cap Screw	2	3	3
26	F1216	¼" - 20UNC x 1" Flat Countersink Allen Head	4	0	0
27	F1158	¼" - 20UNC x ½" Allen Head Set Screw	2	2	2
28	F1654	¾" - 10UNC x 6" Grade 5 Hex Head Cap Screw	1	1	1
29	F1655	¾" - 10UNC Nylon Self-Locking Hex Nut	1	1	1
30	F1425	⅜" - 16UNC x 1" Grade 8 Flange Bolt	12	12	12
31	F1426	⅜" - 16UNC Grade 8 Hex Head Flange Nut	9	9	9
32	F1421	⅜" - 16UNC Hex Head Whiz Lock Nut	5	5	5
33	F1199	¼" - 20UNC x ¾" Grade 5 Hex Head Cap Screw	8	8	8
34	F1152	¼" - 20UNC Center Hex Lock Nut	4	4	4
35	F1164	¼" Lock Washer	4	0	0
36	F1049	#10 x 1" Hex Washer Head Screw (AB)	4	4	4
37	F1338	⅝" - 18UNC x ¾" Hex Head Whiz Lock Screw	2	2	5
38	F1339	⅝" - 18UNC Hex Head Whiz Lock Nut	4	4	7
39	N11-417B	¼" O.D. Polyethylene Tubing	7'	7'	7'
40	F1048	#10- 24UNC x ⅜" Button Head Machine Screw	2	2	2

Item No.	Part No.	Description	DRM654 Quantity	DRM655 Quantity	DRM656 Quantity
41	F1200	¼" Star Lock Washer	3	3	3
42	F1196	¼" I.D. x 1" O.D. Flat Washer	0	0	5
44	155186	Garloc Bushing	1	1	1
45	214C	Air Valve	2	2	2
46	1169X45	Male Swivel Elbow	4	4	4
47	F1032	#8- 32UNC x 1" Slotted Head Machine Screw	2	2	2
48	F1031	#8- 32UNC Hex Head Nut with Star Lock Washer	2	2	2
49	F1923	Nylon Flat Washer	8	8	8
50	F1922	¾" Snap Binding Screw Post	8	8	8
51	1168X4X6	Male Connector	1	1	1
52	F1204	¼" x ¼" with #10-32UNC Thread	2	2	2
53	DRM316A1-2	Clip Pin	2	2	2
54	DRM316A1-5	0.06" Heavy Compression Spring	1	1	1
55	P1105	0.055" Compression Spring	1	1	1
56	1169X4X6S	Male Swivel Elbow	1	1	1
57	PA50D	Hydraulic Pump	1	1	1
58	8936-0369	Air Valve	1	1	1
59	P1015	Hydraulic Cylinder (18" CRSS)	1	1	1
60	F1971	¾" x 2½" Pipe Nipple	1	1	1
61	P1104	¾" Air Filter	1	1	1
62	F1191	¼" - 20UNC Hex Socket Set Screw, Cone Point	1	1	1
63	600018-4	J-Bolt	1	1	1
64	150135-1	Air Pump Clamp	1	1	1
65	150143	Pivot Bar	1	1	1
66	600150-1	Micro Switch Activator	1	1	1
67	H42508X16	16" Hydraulic Hose w/Fittings	1	1	1
68	H42508X24	24" Hydraulic Hose w/Fittings	1	1	1
69	P1151	Fixed Force Gas Spring	1	1	1
72	P1154	Gas Spring Ball Stud	2	2	2
73	F1036	#8- 32UNC x 1½" Slotted-Head Machine Screw	2	2	2
74	F1038	#8- 32UNC Nylon Self-Locking Hex Nut	17	17	17
75	F1468	¾" - 16UNC x ¾" Carriage Bolt	2	2	2
76	F1039	#8- 32UNC x ½" Slotted-Head Machine Screw	15	15	15
77	F1065	#10- 24UNC x ⅝" Slotted-Head Machine Screw	2	2	2
78	F1054	#10- Steel Flat Washer	2	2	2
79	F1722	#10- 24UNC Nylon Self-Locking Hex Nut	2	2	2
80	600103	Locating Pin	0	1	1
81	600104	Nonsparking Kit	0	1	1
82	600104-3	Aluminum Round Disc	0	1	1
83	600107	Brass Grounding Washer	0	1	1
84	P1090	Beam Clamp	0	1	1
85	P1091	Terminal Lug	0	1	1
86	P1092	6' Green Ground Wire	0	1	1
87	F1219	¼" - 20UNC x 1" Brass Hex Head Screw	0	1	1
88	F1220	¼"-20UNC x 1" Brass Flat Countersink Allen Head	0	7	7
91	P1088	½" Male Nipple with ½" Hose Barb	0	0	2
92	P1089	½" Female Nipple with ½" Hose Barb	0	0	1

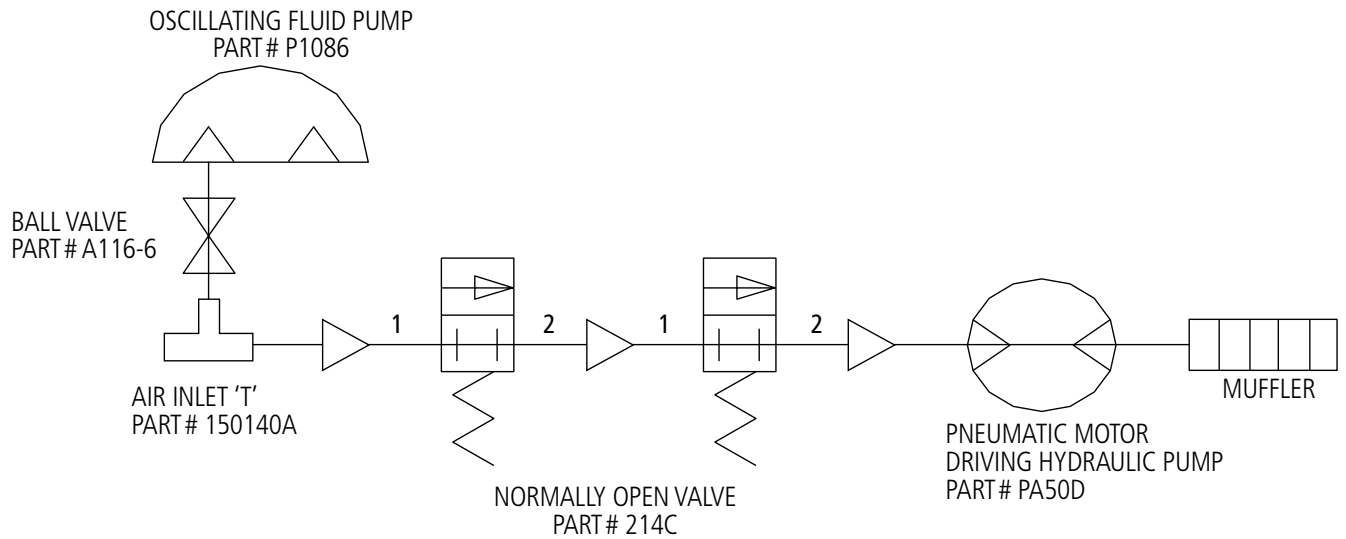
Item No.	Part No.	Description	DRM654 Quantity	DRM655 Quantity	DRM656 Quantity
93	P1086	Pump Model 66056-2A4	0	0	1
94	P1093	1/2" x 90 Degree Elbow (Brass)	0	0	1
95	P1094	1/2" x 3" Nipple (Brass)	0	0	1
96	P1087	Ring Terminal	0	3	3
97	150150	Pump Guard	0	0	1
98	150146	Hose Bracket	0	0	1
99	F1938	3/8" B.I.P. x 1 1/2" Nipple	0	0	1
101	A116-6	3/8" Ball Valve	0	0	1
102	P1097	1/2" Hose Clamp	0	0	3
103	F1940	1/4" Pipe x 3/8" Hose Barb	0	0	1
106	F1151	1/4" - 20UNC x 7/8" Hex Head Cap Screw	0	0	4
108	F1939	3/8" Hose Clamp	0	0	2
109	P1083	1/2" Reinforced Hose x 7'	0	0	2
110	600099-3	18" Aluminum Wand	0	0	1
111	600143-10	Dome Cover Hinge	1	1	1
112	F1198	1/4" - 20UNC Hex Nut	1	1	1
101	A116-6	3/8" Ball Valve	0	0	1
102	P1097	1/2" Hose Clamp	0	0	3
103	F1940	1/4" Pipe x 3/8" Hose Barb	0	0	1
106	F1151	1/4" - 20UNC x 7/8" Hex Head Cap Screw	0	0	4
108	F1939	3/8" Hose Clamp	0	0	2
109	P1083	1/2" Reinforced Hose x 7'	0	0	2
110	600099-3	18" Aluminum Wand	0	0	1
111	600143-10	Dome Cover Hinge	1	1	1
112	F1198	1/4" - 20UNC Hex Nut	1	1	1
101	A116-6	3/8" Ball Valve	0	0	1
102	P1097	1/2" Hose Clamp	0	0	3
103	F1940	1/4" Pipe x 3/8" Hose Barb	0	0	1
106	F1151	1/4" - 20UNC x 7/8" Hex Head Cap Screw	0	0	4
108	F1939	3/8" Hose Clamp	0	0	2
109	P1083	1/2" Reinforced Hose x 7'	0	0	2
110	600099-3	18" Aluminum Wand	0	0	1
111	600143-10	Dome Cover Hinge	1	1	1
112	F1198	1/4" - 20UNC Hex Nut	1	1	1

6 Air Schematics

Item# DRM654 and DRM655



Item# DRM656



7 Preventive Maintenance

1. Clean Bowl Filter — Keep air dry
2. Add a small amount of air tool oil or lightweight machine oil to air line.
Note: An automatic oiler may be added to the air line on the unit, but do not over-oil.
3. Check hydraulic oil level. Should be within approximately 1" from top of filler hole.
Use a general-purpose mediumweight hydraulic fluid.
4. Check for loose nuts, bolts and pins.
5. Check Ram Plate to ensure that it is secured to the hydraulic cylinder shaft. Run unit empty to full extension of the hydraulic cylinder. Allow the unit to build full pressure, this will lock the cylinder in place so that it can be tightened or removed. Caution — Loosen set screw before attempting to tighten or remove ram plate.

8 Troubleshooting Guide

Hydraulic pump runs, but ram will not move.

- Low air pressure — Air pressure should be between 80 psi and 120 psi.
- Hydraulic fluid is low — Use a mediumweight hydraulic fluid and fill to within 1" of the top of filler hole with the ram in the up position.
- Water and dirt in the air supply — Drain water and clean filter bowl. Add a small amount of air tool oil or lightweight machine oil to the air line.
- Up and down lever is not fully engaged — Make sure lever is moved completely to the up or down position.
- Breather cap on the hydraulic pump is closed — Open cap.

Waste pump runs, but will not pump.

- Check hoses for obstructions.
- Check filter screen and clean.

Pump will not run.

- Check air supply.
- Add a small amount of air tool oil or lightweight machine oil to the air line.

Hydraulic pump will not run.

- Check air supply — Air pressure to unit should be between 80 psi and 120 psi.
- Water and dirt in the air supply — Drain water and clean filter bowl. Add a small amount of air tool oil or lightweight machine oil to the air line.
- Safety cover micro is not fully engaged — Make sure it is fully closed.
- Safety cover micro is out of alignment — Adjust micro so it is fully engaged when cover is in the closed position.
- Tilt micro is not fully engaged — Make sure the compactor is in the upright position and the locking pins are fully extended and depressing the micro.
- Tilt micro is out of alignment — Adjust micro so it is fully depressed when compactor is in the upright position and the locking pins are fully extended.

Loose Ram Plate

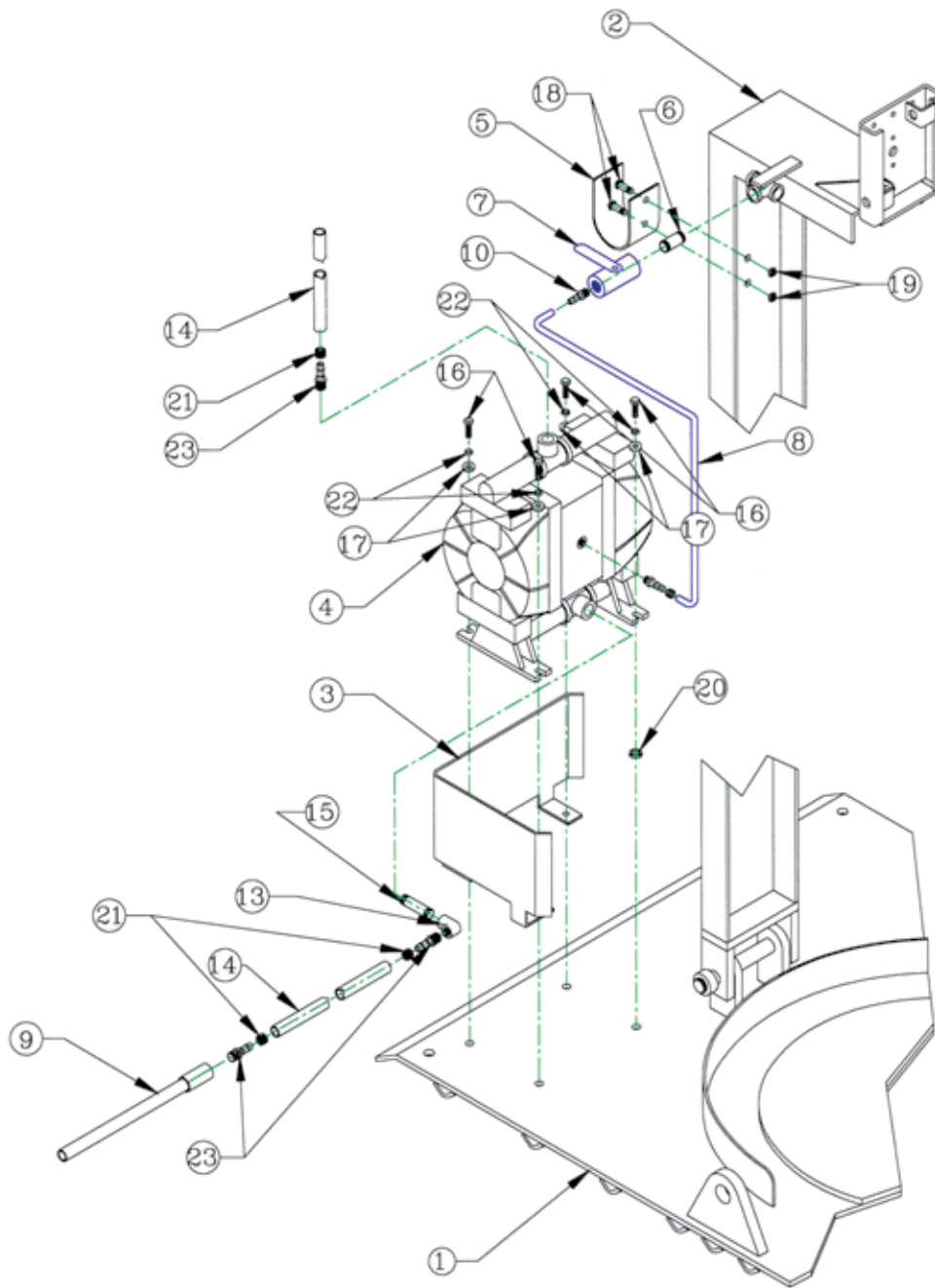
- Ram plate is loose — Run the compactor empty to full extension of hydraulic cylinder. Allow unit to build full pressure, this will lock the cylinder in place so it can be tightened or removed.

CAUTION: Loosen set screw before attempting to tighten or remove ram plate.

Section III

Waste Pump Assembly Item# DRM345

1 Optional Waste Pump



5 Parts List

Waste Pump Parts List – DRM345

Item No.	Part No.	Description	DRM652 Quantity
1	150123	Base Plate	1
2	150140	Rear Pivot	1
3	150150	Pump Guard	1
4	P1239	Diaphragm Pump	1
5	150146	Hose	1
6	F1938	3/8" x 1 1/2" Pipe Nipple	1
7	A116-6	3/8" Ball Valve	1
8	N11-417B	1/4" Black Tubing	4'
9	DRM345-9	1/2" x 18" PVC Pipe	1
10	1169x45	Swivel Male Elbow	1
13	F1946	1/2" 90 Deg. PVC Elbow	1
14	F1947	5/8" x 7' Clear Hose	2
15	F1948	1/2" x 3" PVC Pipe Nipple	1
16	F1184	1/4" -20UNC x 1" Hex Head Bolt	4
17	F1196	1/4" Flat Washer	4
18	F1338	5/16" -18UNC x 3/4" Hex Head Flange Bolt	2
19	F1339	5/16" -18UNC Hex Head Flange Nut	2
20	DRM345-21	Spacer	1
21	F1949	5/8" Hose Clamp	3
22	F1164	1/4" Lock Washer	4
23	F1943	1/2" Pipe x 5/8" Hose Barb	3

Section IV

Limited Warranty

Congratulations on your recent purchase of a quality New Pig Corporation product. We are confident that our product will perform well and are pleased to provide you (the Original Retail Purchaser) with this Limited Warranty valid for one year from the original purchase date. Remember to keep proof of your purchase date.

FOR SERVICE OR QUESTIONS CALL 1-800-HOT-HOGS®

LIMITED WARRANTY

New Pig Corporation warrants to the Original Retail Purchaser that the enumerated products are free from mechanical or electrical defects in materials and workmanship. This LIMITED WARRANTY is only valid if the Original Retail Purchaser notifies New Pig Corporation within one (1) year (the "Warranty Period") of the original retail purchase. This LIMITED WARRANTY only applies to the following enumerated products. New Pig Corporation shall, at its sole discretion, repair the product or replace it with a product of comparable value. New Pig Corporation may require the Original Retail Purchaser to return the product to New Pig Corporation at the Original Retail Purchaser's expense. For notification or questions, call 1-800-HOT-HOGS®. You may also write Customer Service, ATTN: Warranty Service, New Pig Corporation, One Pork Avenue, Tipton, PA 16684-0304. You must maintain proof of purchase of the product to prove the date of purchase.

THIS LIMITED WARRANTY DOES NOT COVER NORMAL WEAR AND TEAR, DAMAGE RESULTING FROM NEGLIGENT USE, DAMAGE FROM MISUSE OF THE PRODUCT, USE OF IMPROPER CURRENT OR VOLTAGE, ANY USE NOT IN ACCORDANCE WITH THE OPERATION MANUAL, GLASS BREAKAGE (IF APPLICABLE), DISASSEMBLY, REPAIR OR ALTERATION BY ANY PERSON NOT SPECIFICALLY AUTHORIZED BY NEW PIG CORPORATION.

THE REMEDIES PROVIDED IN THIS LIMITED WARRANTY ARE THE SOLE AND EXCLUSIVE REMEDIES AVAILABLE TO YOU. NO OTHER EXPRESS WARRANTIES ARE MADE. ALL IMPLIED WARRANTIES, INCLUDING BUT NOT LIMITED TO ANY IMPLIED WARRANTY OF MERCHANTABILITY OR FITNESS FOR A PARTICULAR PURPOSE OF USE, ARE EXCLUDED. IN NO EVENT SHALL NEW PIG CORPORATION BE LIABLE FOR ANY INCIDENTAL OR CONSEQUENTIAL DAMAGES. IN NO EVENT SHALL NEW PIG CORPORATION'S LIABILITY EXCEED THE ORIGINAL PURCHASE PRICE OF THE PRODUCT WHICH IS THE SUBJECT OF PROPER NOTICE OF DEFECTS. IF THE ORIGINAL RETAIL PURCHASER FAILS TO NOTIFY THE NEW PIG CORPORATION OF ANY DEFECTS, WHETHER PATENT OR LATENT, WITHIN THE WARRANTY PERIOD, NEW PIG CORPORATION SHALL HAVE NO FURTHER LIABILITY OR OBLIGATION.

SOME STATES AND PROVINCES DO NOT ALLOW LIMITATIONS ON HOW LONG AN IMPLIED WARRANTY LASTS OR DO NOT ALLOW THE EXCLUSION OR LIMITATION OF INCIDENTAL OR CONSEQUENTIAL DAMAGES, SO THE ABOVE LIMITATIONS MAY NOT APPLY TO YOU.



New Pig

One Pork Avenue
Tipton, PA 16684-0304

newpig.com

North America: **1-800-468-4647**

Europe: **+31 (0)76 596 92 50**

UK: **0800 919 900**

Outside North America: **+1-814-684-0101**

PIG, PIG logo are registered trademarks in USA and other countries. See tm.newpig.com

330603