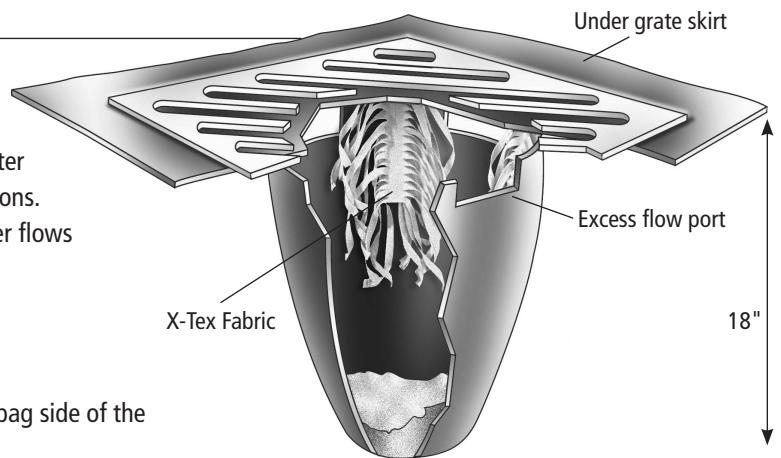


# PIG Drain Insert Plus

## Instructions

This low-cost, low-maintenance catch basin filter is ideal for industrial facilities, parking lots, construction sites or other areas prone to oil and sediment runoff. It uses highly absorbent X-Tex filter strips produced from recycled synthetic fibers to remove hydrocarbons. The 18" deep accumulation pocket collects sediment as stormwater flows through the insert. To use:

1. Remove catch basin grate.
2. Clean dirt and debris from grating ledge.
3. Lay PIG Drain Insert Plus over the catch basin opening with the bag side of the filter inside the basin.
4. Replace the grating, securing the filter's fabric between the grating and the catch basin.
5. For easy maintenance, leave a minimum 3" – 5" strip of material sticking out from under the grate.



## Maintenance:

The level of accumulated sediment can be determined by probing with a measuring stick. When the unit is approximately half full (about 9" of sediment), it should be emptied and reinstalled. The PIG Drain Insert Plus should be inspected on a regular basis.

Fabric Property	Test Method	Unit	Value
Fabric Weight	ASTM D-5261	oz/yd <sup>2</sup>	9
Thickness	ASTM D-5199	mil	85
Water Flow Rate	ASTM D-4491	gpm/ft <sup>2</sup>	65*
Permeability	ASTM D-4491	cm/sec	.25
U.V. Resistance	ASTM D-4355	% (@500 hours)	70

\* The total water flow rate through the insert in new condition is in excess of 500 gpm. The bypass rate is approximately 750 gpm.



**New Pig**

One Pork Avenue  
Tipton, PA 16684-0304

**newpig.com**

North America: **1-800-468-4647**

Europe: **+31 (0)76 596 92 50**

PIG, PIG logo are registered trademarks in USA and other countries. See [tm.newpig.com](http://tm.newpig.com)

UK: **0800 919 900**

Outside North America: **+1-814-684-0101**