

# PIG Caster Assembly Kit

## Instructions

### Step 1 – Inspect Kit

Open your Caster Assembly Kit and inspect its contents. Each kit should include (2) swivel wheels, (2) fixed wheels, (4) cotter pins and (4) pins.

### Step 2 – Install Wheels

Lay the cart on either end.

Firmly push the wheels into the rectangular pockets in the underside of the cart. The holes in the wheel mounting plates should be visible through the pinholes in the cart.

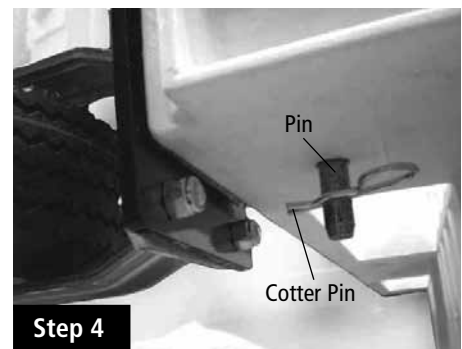
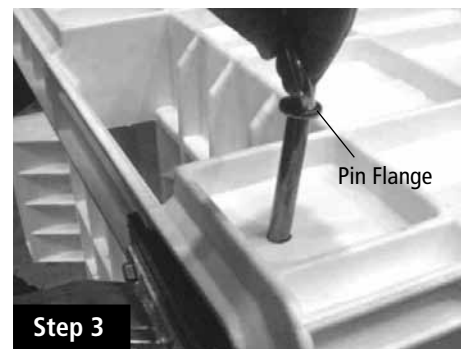
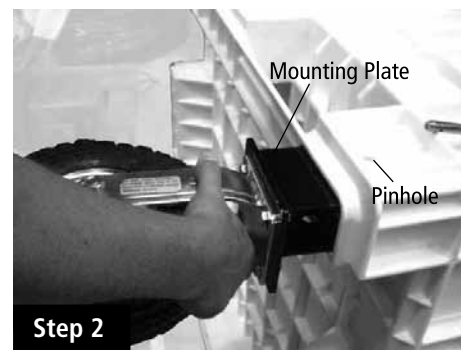
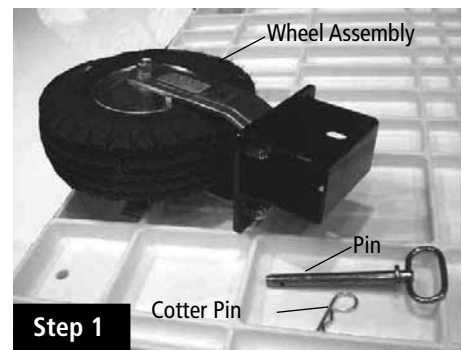
**Note:** For the cart to steer properly, the two swivel wheels must be installed on the same end.

### Step 3 – Insert Pins

Slide a pin through each pinhole until the pin flange is flush with the cart. Use a rubber mallet if needed to fully set the pins.

### Step 4 – Insert Cotter Pins

Push a cotter pin through the predrilled hole in the end of each pin to secure the wheels to the cart.



**New Pig**

One Pork Avenue  
Tipton, PA 16684-0304

[newpig.com](http://newpig.com)

North America: 1-800-468-4647

Europe: +31 (0)76 596 92 50

PIG, PIG logo are registered trademarks in USA and other countries. See [tm.newpig.com](http://tm.newpig.com)

UK: 0800 919 900

Outside North America: +1-814-684-0101

165862 / 287285