



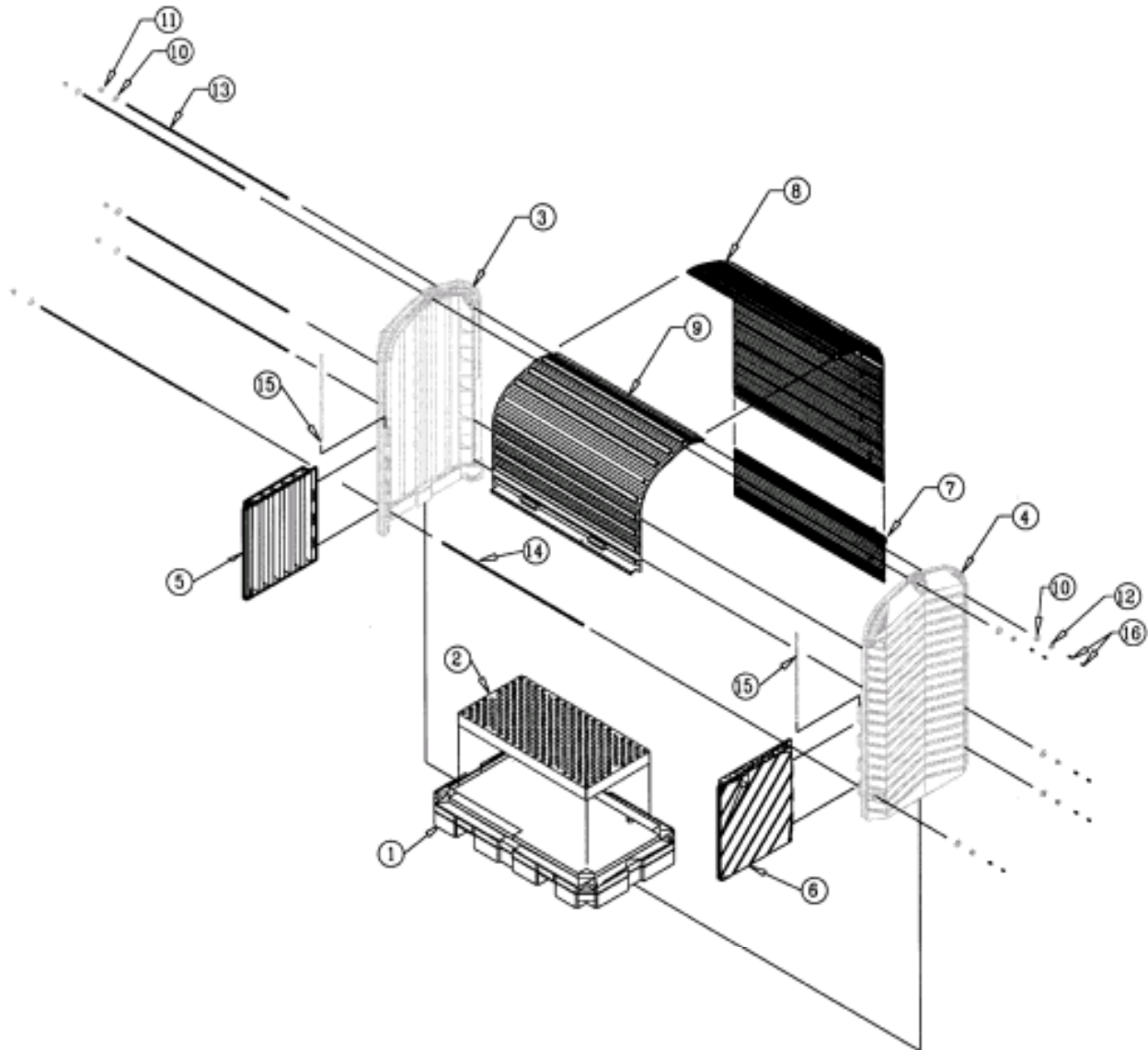
2 Drum Roll Top Hardcover

Parts List

	Part #	Qty	Description
1	30166	1	2 Drum Heavy Duty Spill Pallet
2	70186	1	4 ¼" x 26" x 52" Polyethylene Grate
3	30325	1	Left Sidewall
4	30326	1	Right Sidewall
5	30327	1	Left Lower Door
6	30328	1	Right Lower Door
7	30330	1	Lower Back Panel
8	30331	1	Upper Back Panel
9	30332	1	Front Rolling Door
10	70274	10	2" O.D. Flat Washer
11	70366	5	3/8"-16UNC Acorn Nut
12	70367	5	3/8"-16UNC Nylon Lock Nut
13	70368	5	3/8"-16UNC X 62 ¾" All Thread
14	70369	1	3/8" I.D. Black Plastic Pipe x 57" Long
15	70370	2	½" EMT Conduit X 29 7/8" Long
16	70371	10	3/8" Black Plastic Thread Cap

New Pig

One Pork Ave. • Tipton, PA 16684 • (814) 684-0101 • newpig.com





Assembly Instructions

- Step 1** Place one flat washer (10) on a piece of all thread (13) and fasten an acorn nut (11) to the end of the all thread. Make sure to apply thread lock to the acorn nut. REPEAT this step four more times. *This step is completed at factory.*
- Step 2** Stand the left(3) and right(4) sidewalls up with approximately 5 feet between them. Please refer to the diagram.
- Step 3** Place two rod assemblies through the left sidewall on the bottom backside of it. Run the rod assemblies through the lower back panel (7) (Make sure the phrase "Top End" is up and facing out) into the right sidewall. Place a washer and a nylon nut on both rod assemblies. Tighten nut ½" onto threaded rod.





Step 4 Place the sidewall assembly around the spill pallet(1 & 2).



Step 5 Take another rod assembly and insert it through the front bottom hole in the left sidewall. Slide the black pipe(14) over the rod assembly. Then push the rod through the right sidewall and place a washer(10) and a nylon nut(12) on the rod assembly. Tighten nut ½” onto threaded rod.

Note: Place the two conduit pieces(15) in the hinge holes of the sidewalls, if they are not already in the holes. Making sure the sidewall assembly is up on the lip on the spill pallet, pull the two sidewalls together using the conduit as hand holds. This will make it possible to place a washer and a nylon nut on the rod assembly.

Step 6 Guide the upper back panel (8) into the inside track. Begin by inserting the bottom left corner into the inside track. This corner will go behind the lower back panel that was previously installed. Continue inserting the left side until approximately one half of the left side of the panel is inside the track. Before inserting the right side of the panel, push out on the right sidewall. While pressing on the right sidewall, lower the bottom right corner of the panel into the inside track. Again, make sure the upper back panel goes behind the lower back panel.

Note: The bottom rib of the upper back panel should meet the top rib of the lower back panel. The ribs will always face out.



Step 7 **Insert another rod assembly into the *upper back* hole in the left sidewall. The rod will pass through the pre-drilled holes (fifth rib from top) of the back panel so that it is on the inside of the assembly. Place a washer and a nylon nut on the rod assembly. Tighten nut ½” onto threaded rod.**

Step 8 **Place the final rod assembly through the top hole of the left sidewall. The rod will pass through the pre-drilled holes in the top ‘rib’ of the back panel. The rod will pass on the inside of this panel and exit through the right sidewall. Place a washer and a nylon nut on the rod assembly and tighten nut ½” onto threaded rod.**



- Step 9** Take the front rolling door(9) and place the top end of door into the track. You will have to buckle the center of the door up to fit it into the track. Once the end is started into the track, pull the end evenly down over the backside. The door will slip into the track.



- Step 10** Remove the conduit from the sidewalls. Then take the left lower door(5) and align the holes with the left sidewall. Once the holes are aligned, slide the conduit down until it is below the top edge of the door. REPEAT this step for the right lower door(6).





- Step 11** **Close the left & right lower doors and the front rolling door. Begin to tighten the rod assemblies. Start with the bottom front rod assembly. Tighten the bottom front assembly until the lower doors have an approximate $\frac{1}{4}$ " – $\frac{1}{2}$ " even gap between them. Next, tighten the bottom back rod assembly until the ribs on the panels are touching the sidewalls. Repeat this step for the three remaining rod assemblies, starting from the bottom and working your way up. Once this is achieved, check all of the doors to see if they move freely. If the doors don't move freely, loosen the two top rod assemblies until they do move freely.**
- Step 12** **Place two $\frac{3}{8}$ " black plastic thread caps(16) on thread end of the rod assemblies. You may have to cut the caps for the proper length.**

