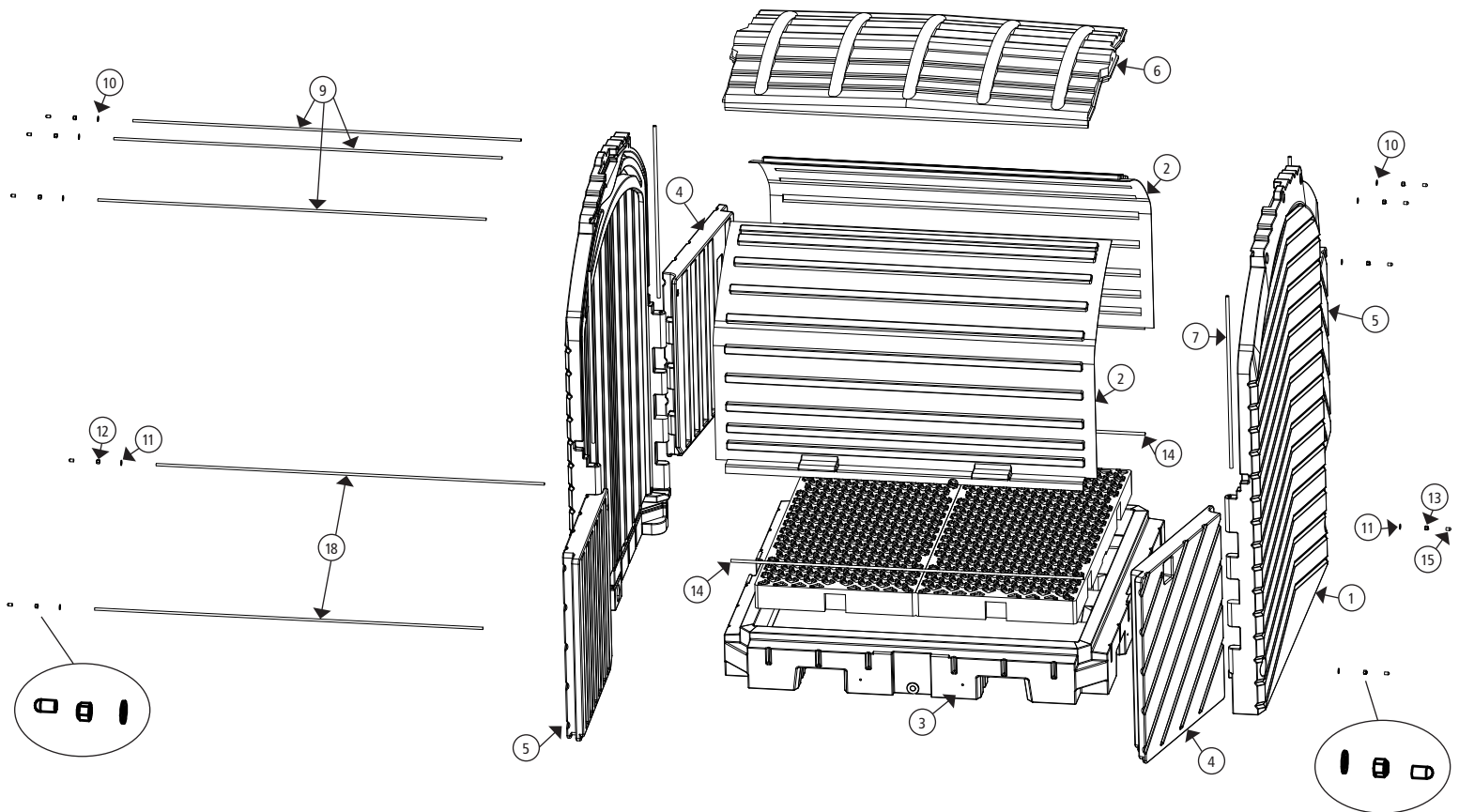


# PIG Roll Top Hardcover Spill Pallet

## Assembly Instructions for 4-Drum model and IBC model

Exploded view of 4-Drum Roll Top Hardcover



**NOTE:** Assembly requires two people

**Tools Required:** • 5/16" Socket & Ratchet • 5/16" Deep Well Socket & Ratchet • Caulking Gun • 5/16" Wrench

### PIG Roll Top Hardcover – Parts List

Item #	Description	Qty
1	Sidewall	2
2	Roll Top Door	2
3	Heavy Duty Pallet Sump with Grates	1
4	Right Door	2
5	Left Door	2
6	Roof	1
7	1/2" EMT Conduit - 29 7/8" L (Hinge Pin Tube)	4
8	3/8" -16UNC x 61 - 3/4" L Threaded Rod	2
9	3/8" -16UNC x 63" L Threaded Rod	3
10	1" Diameter Flat Washer	6

Item #	Description	Qty
11	1-1/2" Flat Washer	4
12	3/8" -16UNC Acorn Nut - 5/8" Hex – Attached to rod	5
13	3/8" -16UNC Nylon Locknut	5
14	57" Long Plastic Rod Cover	2
15	Plastic Rod End Caps	5
16	Silicone (Not Shown)	1
17	1/4" -20UNC x 1 - 1/4" Allen Head Bolt (Not Shown)	6
18	1/4" -20UNC Nylon Locknut (Not Shown)	6
19	1/2" EMT Conduit x 56-3/8" Long (Not Shown)	2



**New Pig**

One Pork Avenue  
Tipton, PA 16684-0304

**newpig.com**

North America: **1-800-468-4647**

Europe: **+31 (0)76 596 92 50**

China: **+86-21-400 921 5178**

PIG, PIG logo are registered trademarks in USA and other countries. See [tm.newpig.com](http://tm.newpig.com)

UK: **0800 919 900**

Outside North America: **+1-814-684-0101**

502596 / 356278

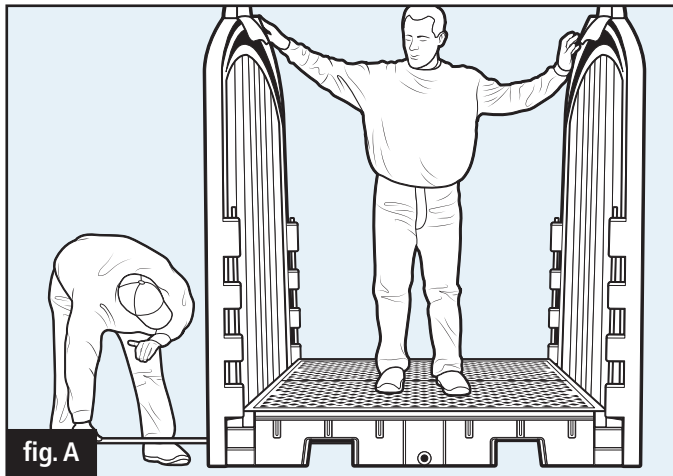
## Assembly Instructions

The 4-Drum Roll Top Hardcover is shown in Figures A–G, but these same instructions apply to the IBC Roll Top Hardcover. Throughout the steps, the numbers in parentheses correspond with the Parts List on the front page.

**STEP 1:** Place a 1½" diameter flat washer (11) over the end of the 61¾" threaded rod (8). Slide flat washer to the end of the rod with the ⅝" acorn nut (12) attached. Repeat this step with the remaining 61¾" threaded rod (8).

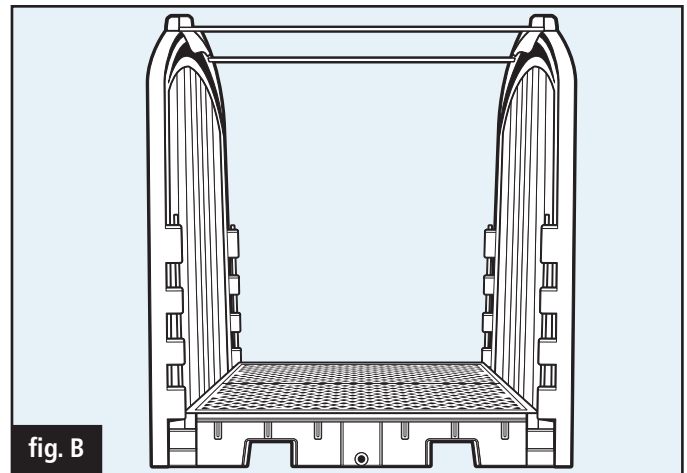
**STEP 2:** Place pallet sump (3) on a flat surface. Place a sidewall (1) on each side of the pallet sump. With someone supporting the sidewalls, align the cutouts on the side and corners on the pallet sump with the mating features on the sidewall. (**NOTE:** If the pallet sump has a drain, make sure it is facing front and not being covered by the sidewalls)

**WARNING:** Do not use IBC Roll Top Hardcover Spill Pallet before checking and repositioning support structures. Failure to ensure the support structures are in the correct position will result in product damage and may result in personal injury. (See warning label on containment sump.)

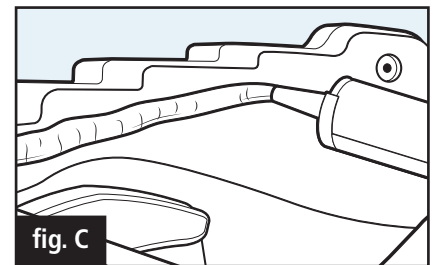


**STEP 3:** Slide the end of the 61¾" rod (9) assembly through the hole at the bottom of sidewall. (**fig. A**) After passing the rod through the sidewall 2" or 3", place the black plastic rod cover tube (14) onto the end of the rod. Slide the rod through the cover tube and through the corresponding hole in the opposite sidewall. Place 1½" diameter flat washer (11) and a ⅝" locknut (13) on the end of the rod. Start the nut about a ½" on the rod. (**DO NOT TIGHTEN.**) Repeat this step for the remaining hole at the bottom of the sidewall (**NOTE:** Always insert the rod from one side of unit so all the acorn nuts are on the same side).

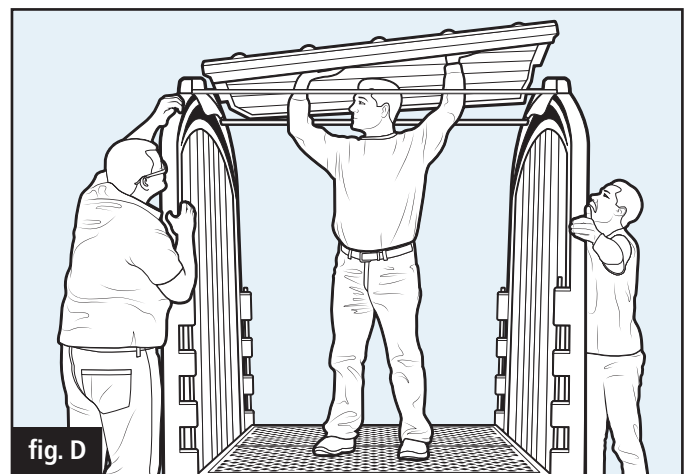
**STEP 4:** Place a 1" diameter flat washer (10) over the end of two 63" threaded rods (9). Slide the washers to the end of the rods with the acorn nut attached. Using the same sidewall that the acorn nuts are on, pass one threaded rod through one of the outside top holes in the sidewall and through the corresponding holes in the opposite wall. (**fig. B**) Place a 1" diameter flat washer (10) and a locknut on the end of the rod. Start the nut on the end of the threaded rod. (**DO NOT TIGHTEN.**) Repeat this step for the remaining outside top hole in the sidewall.



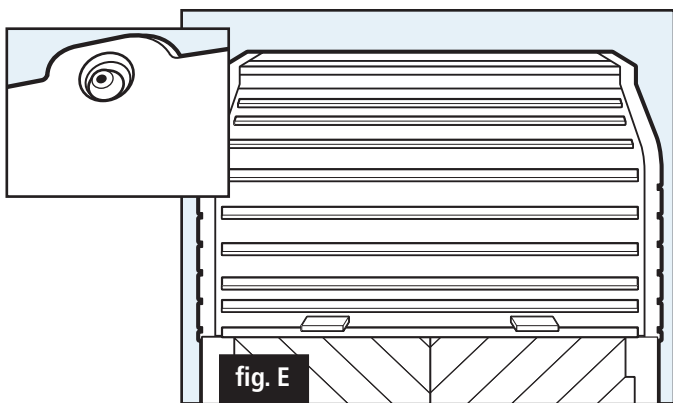
**STEP 5:** Thoroughly caulk both sidewalls the full length and depth of the groove that mates with the roof tongue. (**fig. C**)



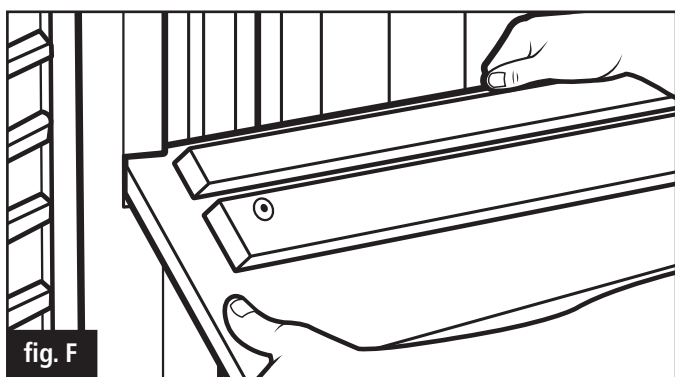
**STEP 6:** Place the roof on top of and between the sidewalls. The top should drop down into the sidewalls, where the tongues of the roof will insert into the corresponding grooves of the sidewalls. (**fig. D**) (Make sure the Silicone Caulk was used as stated in the previous step.)



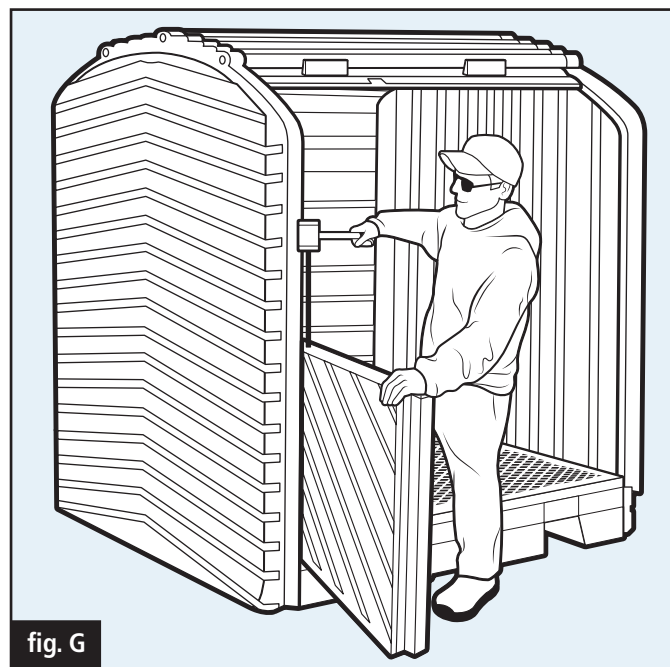
**STEP 7:** Tighten each outside top rod by holding the acorn nut and turning the locknut until you begin to see the edge of the roof line bow up. While tightening, make sure that the tongue on the roof edge is inserted into the corresponding wall groove. (**DO NOT OVERTIGHTEN RODS.**) Place 1" washer on all thread, slide down to acorn nut. Insert rod through final hole in sidewall and pre drilled roof. Place 1" washer and locknut on opposite side (**fig E subset**). Tighten securely to draw the sidewalls together into the roof. There should be no gap between roof and sidewall. Wipe off or smooth out any sealant that may have squeezed out of the seams.



**STEP 8:** Place the top edge of the roll top door (2) into the notches of the sidewalls. Then, push the door up until the entire door is in the track. (**fig. F**) (The door may need to be bowed slightly to place the edges into the notches.) Repeat this step for the opposite side, making sure the roll top door on the opposite side is in the closed position.



**STEP 9:** Align the right door (4) hinge with the mating hinge on the sidewall. (**fig. G**) Align the door hinge pin holes with the hinge pin holes in the sidewall. Slide the hinge pin tube (7) into the aligned holes. (**NOTE:** It may be necessary to move the door and tap the hinge pin tube with a hammer until the hinge pin tube is fully seated through the hinge holes.) (**fig. G**) Repeat this step for the remaining right door (4) and left doors (5).



**STEP 10:** Tighten the bottom threaded rod (8), by holding the acorn nut (12) and tightening the locknut until the gap seen between the two doors at the bottom is about  $\frac{1}{2}$ ". Repeat this step for the other set of doors.

**STEP 11:** Place the black plastic rod end caps (15) over each of the exposed threaded rod ends on the locknut side.

