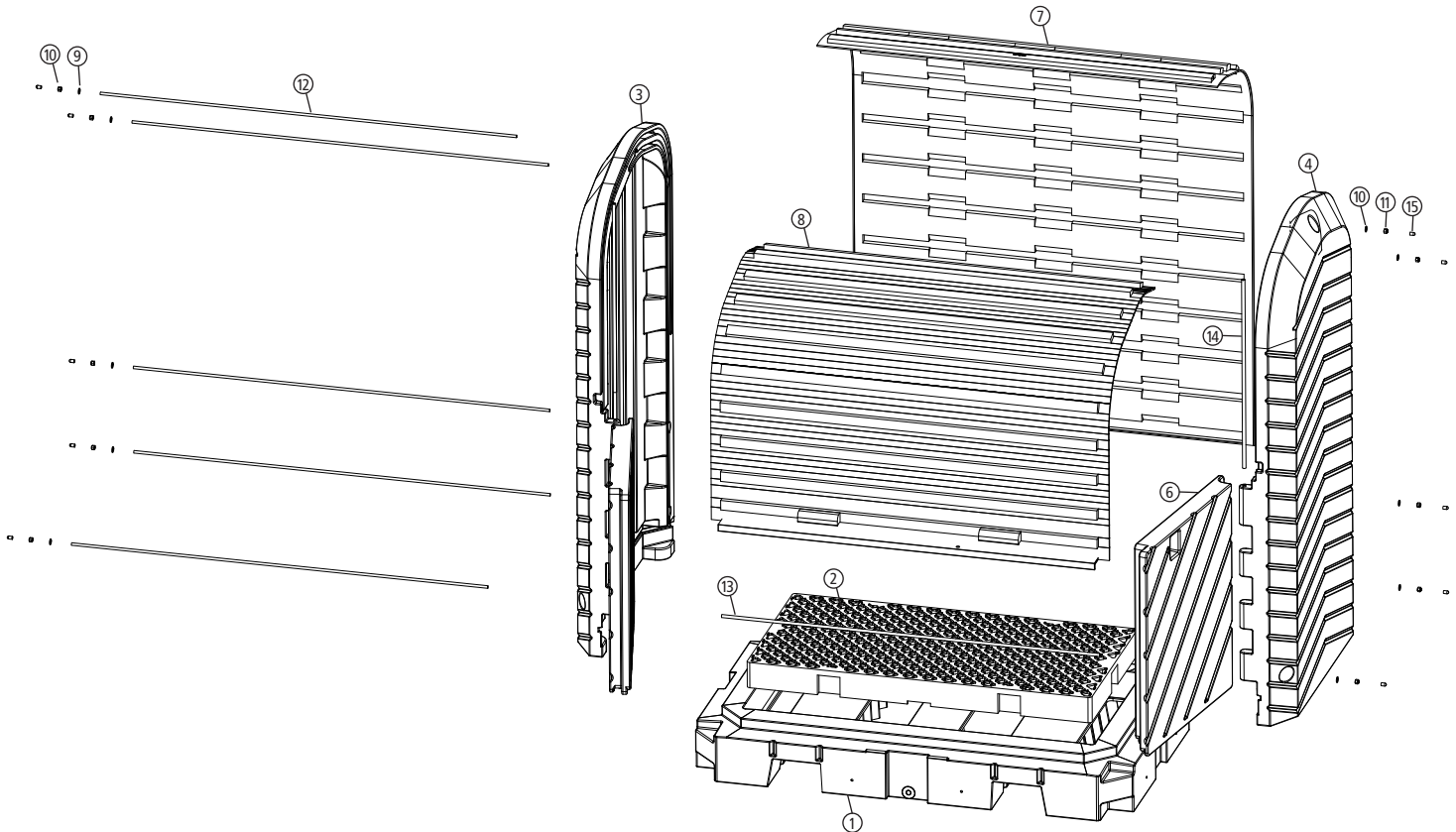


PIG Roll Top Hardcover Spill Pallet

Exploded view of 2-Drum Roll Top Hardcover



2-Drum Roll Top Hardcover – Parts List

Item #	Part #	Qty	Description
1	30166	1	2-Drum Heavy Duty Spill Pallet
2	70186	1	4 1/4" x 26" x 52" Polyethylene Grate
3	30325	1	Left Sidewall
4	30326	1	Right Sidewall
5	30327	1	Left Lower Door
6	30328	1	Right Lower Door
7	30331	1	Back Panel
8	30332	1	Front Rolling Door

Item #	Part #	Qty	Description
9	70274	10	1.5" O.D. Flat Washer
10	70366	5	3/8" -16UNC Acorn Nut
11	70367	5	3/8" -16UNC Nylon Lock Nut
12	70368	5	3/8" -16UNC x 62 3/4" All Thread
13	70369	1	3/8" I.D. Black Plastic Pipe x 57" Long
14	70370	2	1/2" EMT Conduit x 29 7/8" Long
15	70371	5	3/8" Black Plastic Thread Cap



New Pig

One Pork Avenue
Tipton, PA 16684-0304

newpig.com

North America: **1-800-468-4647**

Europe: **+31 (0)76 596 92 50**

China: **+86-21-400 921 5178**

PIG, PIG logo are registered trademarks in USA and other countries. See tm.newpig.com

UK: **0800 919 900**

Outside North America: **+1-814-684-0101**

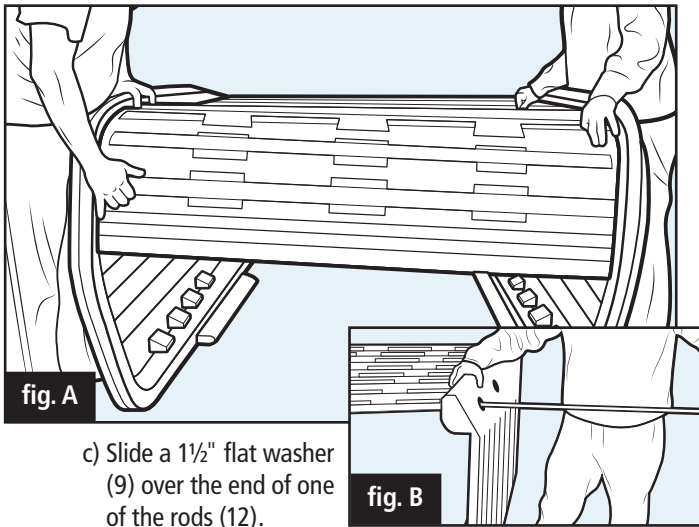
Assembly Instructions

STEP 1: Install the back panel into the sidewalls. (fig. A and B)

NOTE: Numbers in parentheses are Item numbers.

Installation of back panel to the sidewalls requires 3 people.

- Stand and hold the left (3) and right (4) sidewalls along their length on the floor with the hinges facing down.
- Slide the back panel (7) into the channel at the bottom of each sidewall. Continue to slide the back panel up the channel until the last rib on the back panel aligns with the holes in the bottom of the sidewalls.



- Slide a 1/2" flat washer (9) over the end of one of the rods (12).

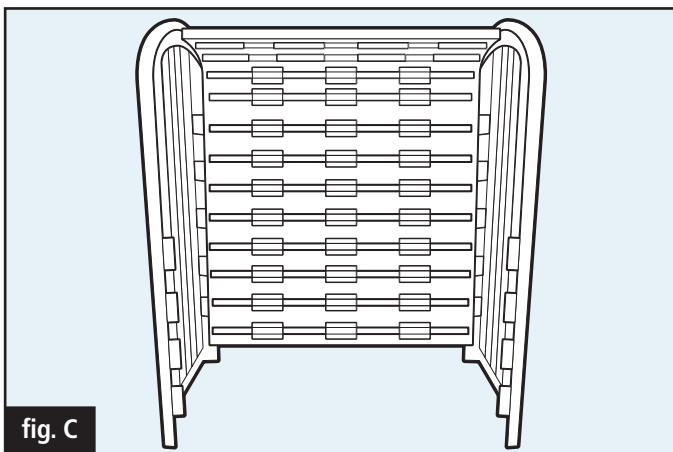


NOTE: All thread rods (12) will have an acorn nut (10) installed at the factory with thread lock applied.

- Slide the rod through the bottom hole in the sidewall and the slotted hole in the rib. From underneath, continue to slide the rod through the slotted hole in the rib and hole in the sidewall on the opposite side. Attach a 1/2" flat washer (9) and nylon locking nut (11) to the end of the rod. Finger-tighten the nylon locking nut.
- Repeat the steps above for the second hole from the bottom.

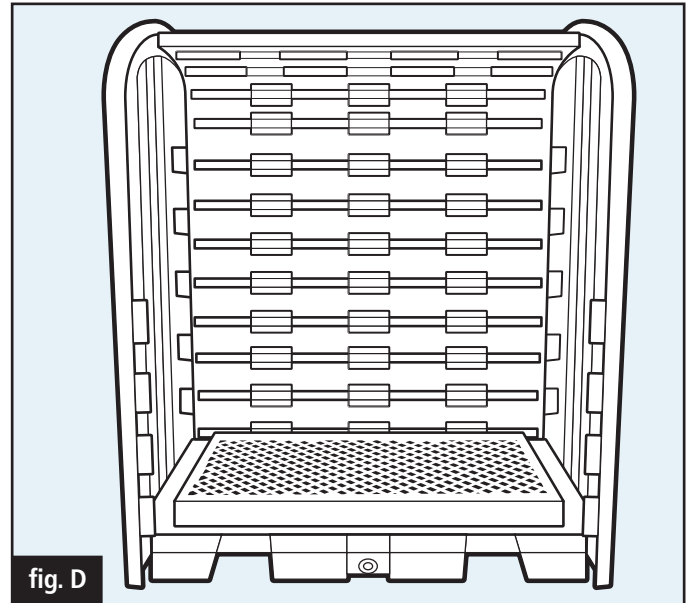
NOTE: Do not place a rod in the third hole from the bottom; rod will be attached later.

- Repeat the steps above for the top hole of the sidewall.
- Stand the assembled sidewall and back panel upright (fig. C) and repeat the steps above for the third hole up from the bottom.

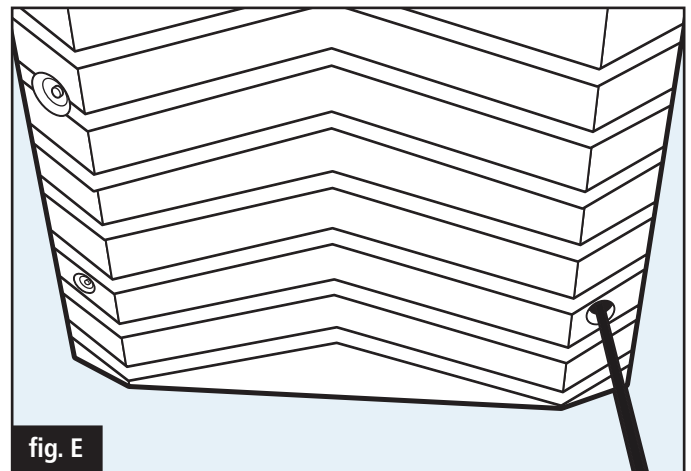


STEP 2: Attach the back panel sidewall assembly to the pallet.

- Place the assembled sidewalls and back panel on top of the spill pallet (1) with the grate (2) installed. The bottom tabs on the sidewalls fit into notches on the sides of the spill pallet and the upper tabs on the sidewalls should rest in notches on the top of the spill pallet. (fig. D)



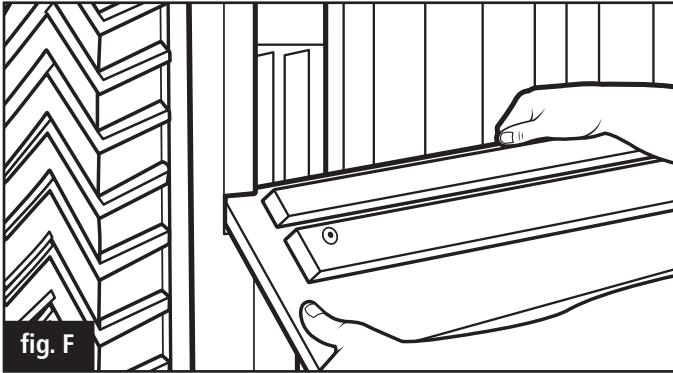
- Take the last all thread rod with acorn nut and install the 1/2" flat washer (9). Then slide the black plastic tube (13) on the all thread rod. Insert this rod with tube through the front bottom hole in the sidewall. Then insert it into the hole on the other side. Attach a 1/2" flat washer (9) and nylon locking nut (11) to the end of the rod. (fig. E)



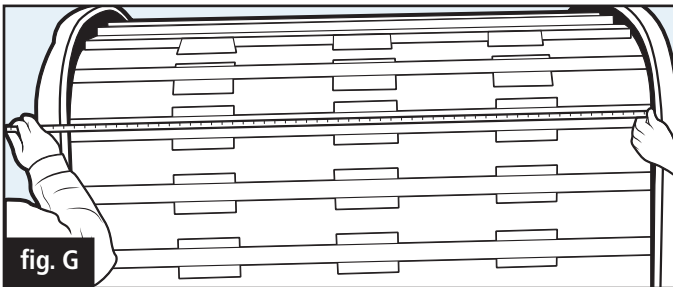
- Tighten the bottom rear attachment rod and the front attachment rod until both sidewalls are tight against the spill pallet sides. (Use a 5/8" socket or wrench to hold the acorn nut while turning the nylon locking nut with a 9/16" deep well socket or wrench.) (fig. E)
- Tighten the second attachment rod from the bottom until the sidewalls just touch the rib on both sides of the back panel.

STEP 3: Insert the rolling door.

- a) Insert the rolling door (8) into the slots in the sidewall. (fig. F) Then slide the rolling door up into the sidewall channels on the outside edge of both side walls keeping the top of the door parallel with the floor.



- b) Continue inserting the door until the complete length of the door is inside the channels of the sidewalls. (fig. F)
c) On the back panel, tighten the third threaded rod from the bottom to a distance of $58 \frac{1}{8}$ " between the sidewalls. Then tighten the top threaded rod to a distance of $58 \frac{1}{8}$ " between sidewalls. (fig. G)



STEP 4: Install the front doors

- a) Install the left (5) and right (6) doors by aligning the hinge hole in the door with the hinge hole in the sidewall.
b) Start the $\frac{1}{2}$ " EMT conduit (14) into the aligned holes, then finish tapping the conduit through the remaining holes until the top of the conduit is below the top edge of the door. (fig. H)



STEP 5: Install safety caps to threaded rod ends.

- a) Place a plastic thread cap (15) on each of the threaded rod ends.

