

Proline Workstation with Cantilever Lighting 60” Plastic Laminate Work Surface

The guide on the following page(s) was provided by the supplier.
New Pig Corporation assumes no responsibility, obligation, or
liability in conjunction with the use or misuse of the information.



New Pig

One Pork Avenue
Tipton, PA 16684-0304

newpig.com

North America: **1-800-468-4647**

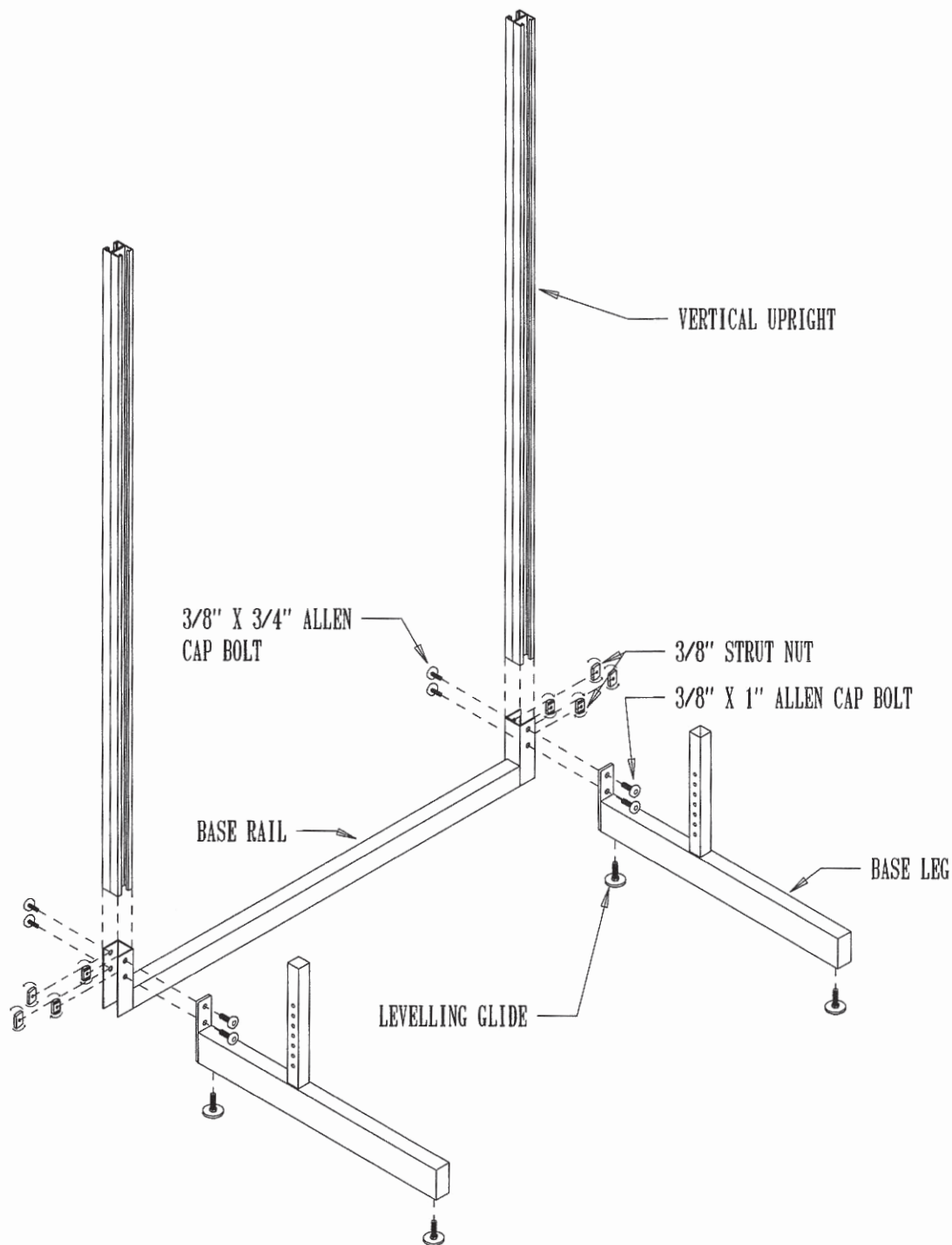
Europe: **+31 (0)76 596 92 50**

China: **+86-21-400 921 5178**

UK: **0800 919 900**

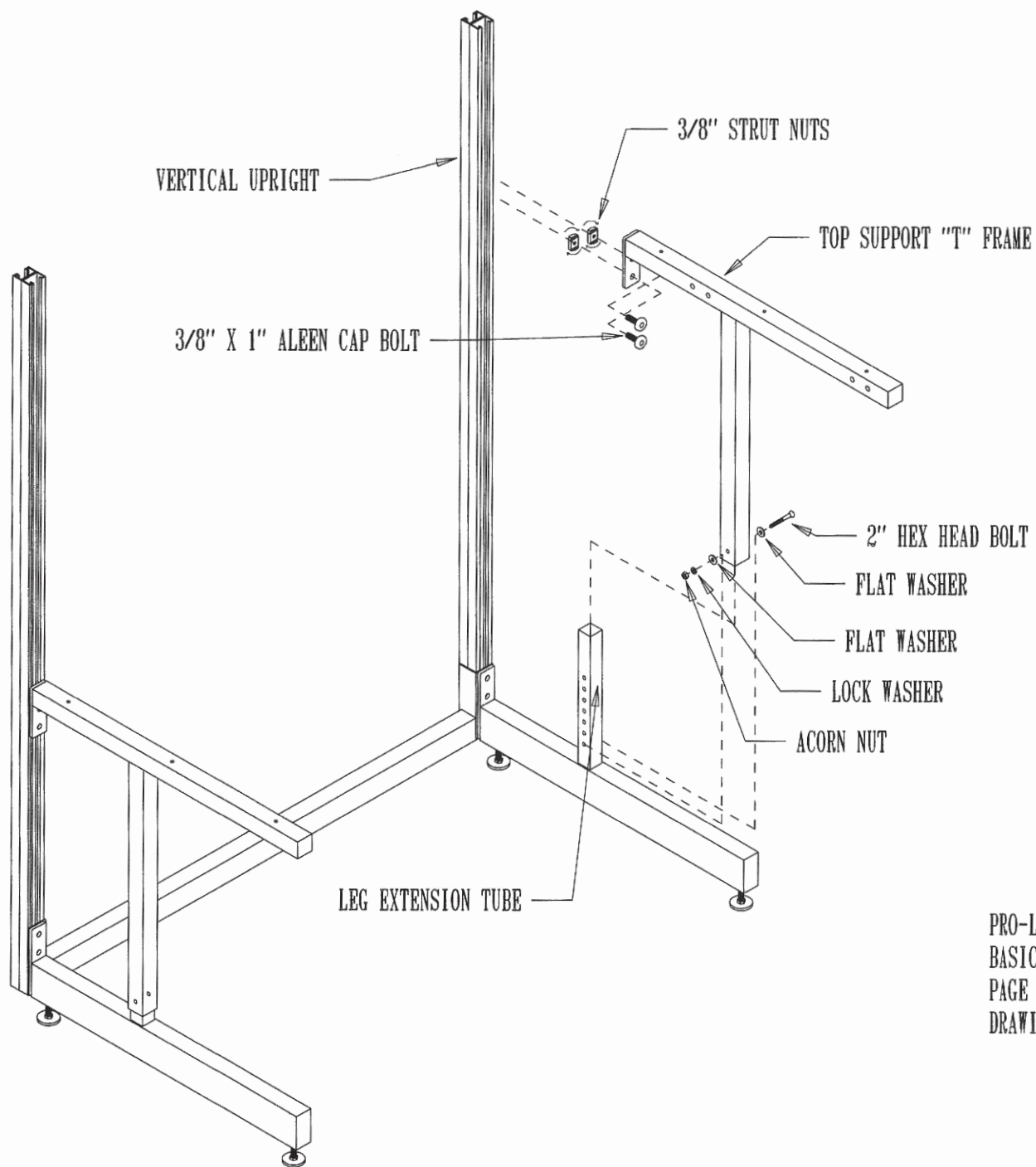
Outside North America: **+1-814-684-0101**

PIG, PIG logo are registered trademarks in USA and other countries. See tm.newpig.com



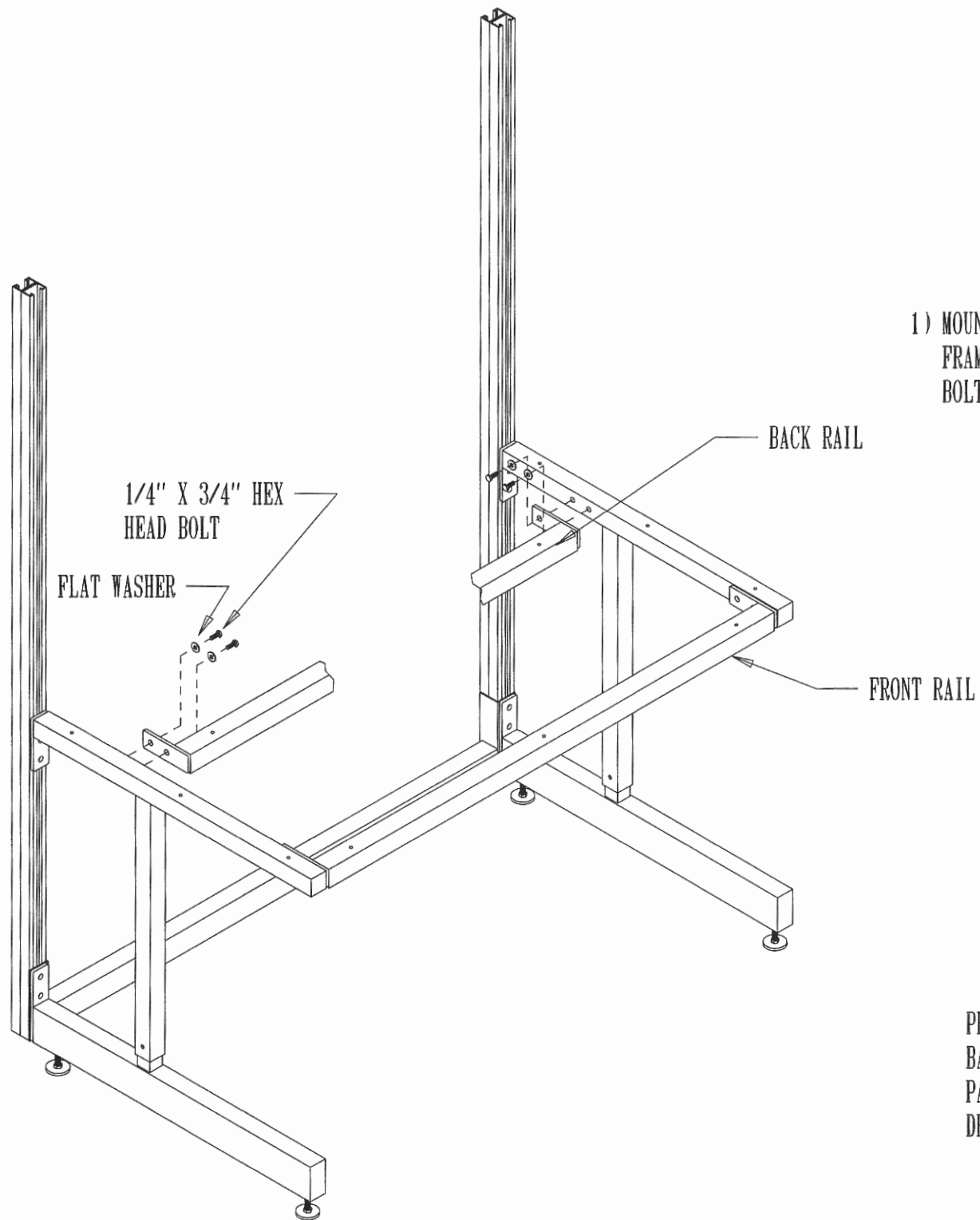
- 1) INSTALL LEVELLING GLIDES BY THREADING THEM INTO THE BOTTOM OF THE BASE LEGS AS SHOWN.
- 2) ATTACH BASE LEG THROUGH BASE RAIL MOUNTING CHANNEL AS SHOWN BY THREADING THE 3/8" STRUT NUTS ONTO THE 3/8" ALLEN HEAD BOLTS BY ONLY 2 THREADS.
- 3) USING THE SAME METHOD BUT WITH 3/4" ALLEN HEAD BOLTS AND 3/8" STRUT NUTS, BOLT THESE ITEMS THROUGH THE REAR OF THE BASE RAIL CHANNEL
- 4) SLIDE THE VERTICAL UPRIGHTS DOWN THROUGH THE BASE RAIL CHANNEL UNTIL FLUSH WITH THE BOTTOM OF THE BASE RAIL. NOW TIGHTEN THE ALLEN HEAD BOLTS MAKING SURE THE GROOVED "TEETH" LINE UP WITH THE INSIDE OF THE VERTICAL UPRIGHT. (THE BOTTOM OF THE BASE RAIL SHOULD BE FLUSH WITH THE BOTTOM OF THE VERTICAL UPRIGHTS)

PRO-LINE
BASIC BENCH ASSEMBLY
PAGE 1
DRAWING #A7402



- 1) INSTALL 3/8" X 1 " ALLEN CAP BOLT THROUGH TOP OF THE "T" FRAME AS SHOWN, THREADING THE 3/8" STRUT NUTS ONLY ON BY 2 THREADS.
- 2) SLIDE TOP SUPPORT "T" FRAME OVER BASE LEG EXTENSION TUBE ALLOWING THE STRUT NUTS TO SLIDE VERTICALLY INSIDE THE VERTICAL UPRIGHT AND BOLT AT DESIRED HEIGHT USING THE 1/4" X 2 " HEX HEAD BOLT, FLAT WASHER, FLAT WASHER, LOCK WASHER AND ACORN NUT.
- 3) FASTEN TOP SUPPORT "T" FRAME TO THE VERTICAL UPRIGHTS BY TURNING THE 3/8" X 1" ALLEN CAP BOLT BEING CERTAIN THE GROOVED "TEETH" LINE UP WITH THE INSIDE OF THE VERTICAL UPRIGHT.
(BE SURE THE TOP SUPPORT FRAME IS PARALLEL TO THE BASE LEG BEFORE TIGHTENING)

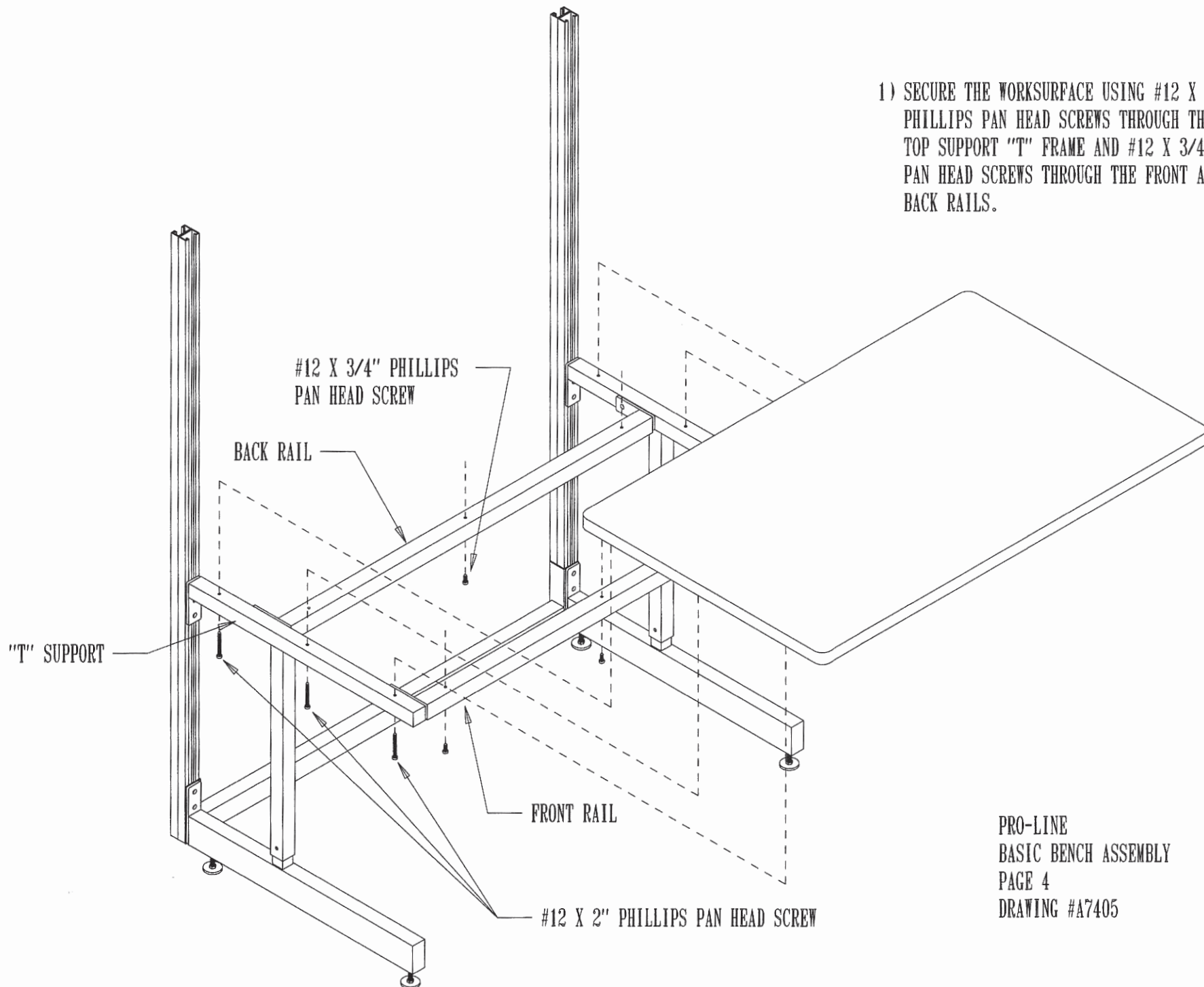
PRO-LINE
BASIC BENCH ASSEMBLY
PAGE 2
DRAWING #A7403



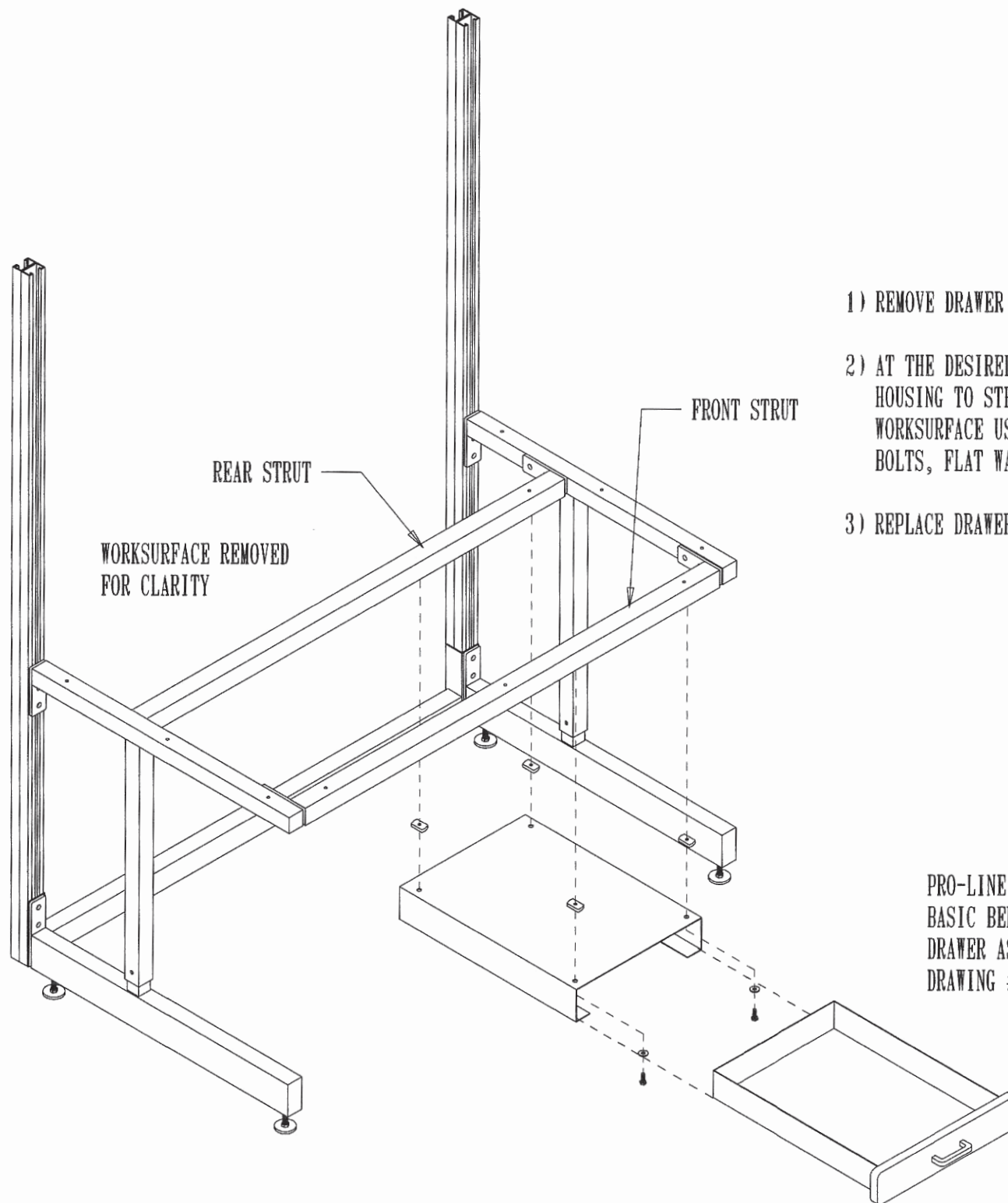
1) MOUNT FRONT AND BACK RAIL TOP SUPPORT
FRAMES AS SHOWN USING 1/4" X 3/4" HEX HEAD
BOLTS AND FLAT WASHERS

PRO-LINE
BASIC BENCH ASSEMBLY
PAGE 3
DRAWING #A7404

- 1) SECURE THE WORKSURFACE USING #12 X 2" PHILLIPS PAN HEAD SCREWS THROUGH THE TOP SUPPORT "T" FRAME AND #12 X 3/4" PHILLIPS PAN HEAD SCREWS THROUGH THE FRONT AND BACK RAILS.



PRO-LINE
BASIC BENCH ASSEMBLY
PAGE 4
DRAWING #A7405



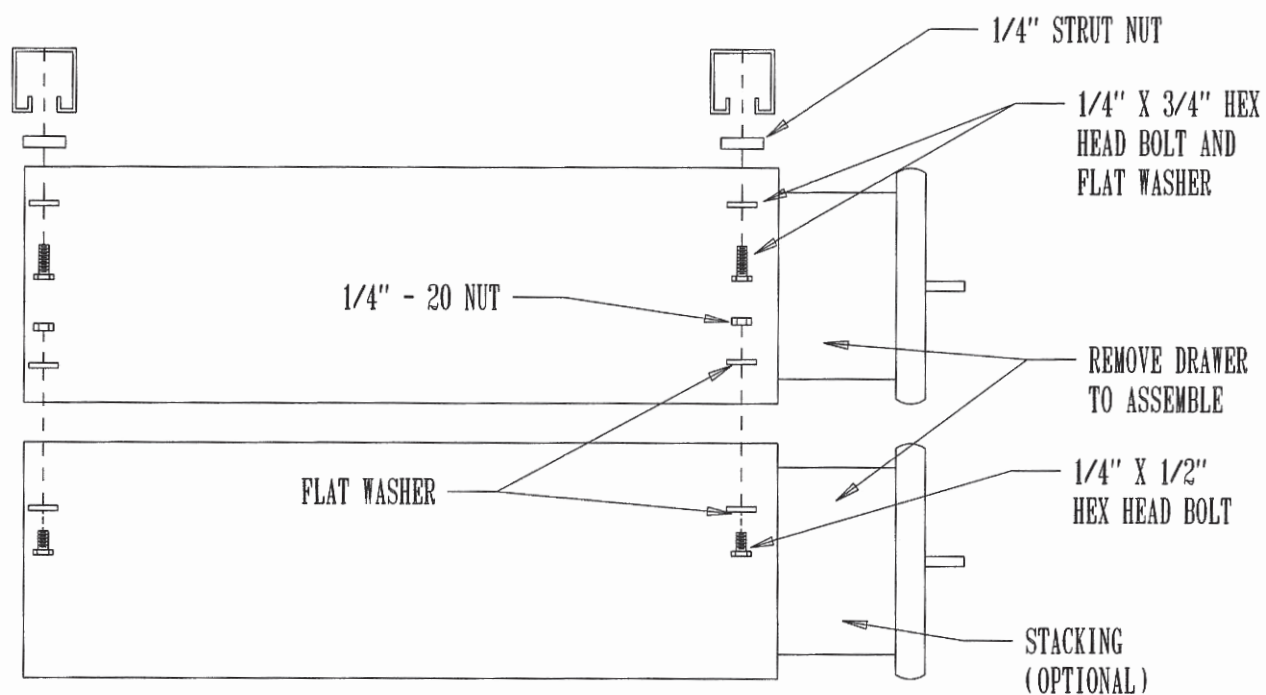
1) REMOVE DRAWER FROM HOUSING

2) AT THE DESIRED LOCATION MOUNT THE DRAWER HOUSING TO STRUTS LOCATED UNDERNEATH THE WORKSURFACE USING 1/4" X 3/4" HEX HEAD BOLTS, FLAT WASHERS, AND 1/4" STRUT NUTS.

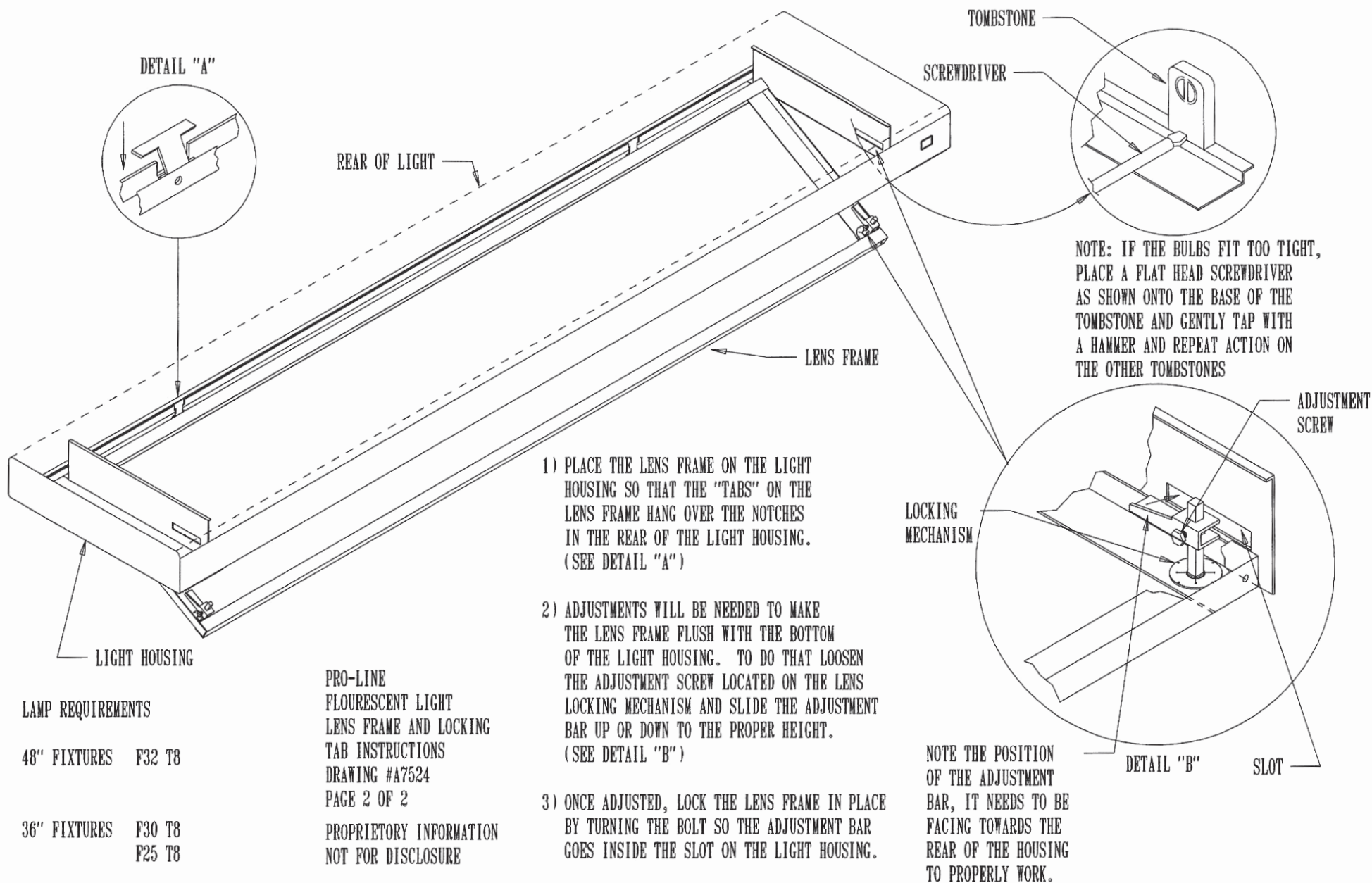
3) REPLACE DRAWER

PRO-LINE
BASIC BENCH
DRAWER ASSEMBLY
DRAWING #A7256-ISO-BASICS

REVISIONS			
REV	DESCRIPTION	DATE	APPROVED
	MDS (MODULAR DRAWER ASSEMBLY) WITH CONNECTING OPTION FOR A BASICS STATION	09-12-07	STANDARD



		MICHAEL SUPLINSKAS		
		PRO-LINE		
	SIZE	FSCM NO.	DWG NO.	REV
			A7256	
	SCALE		SHEET	



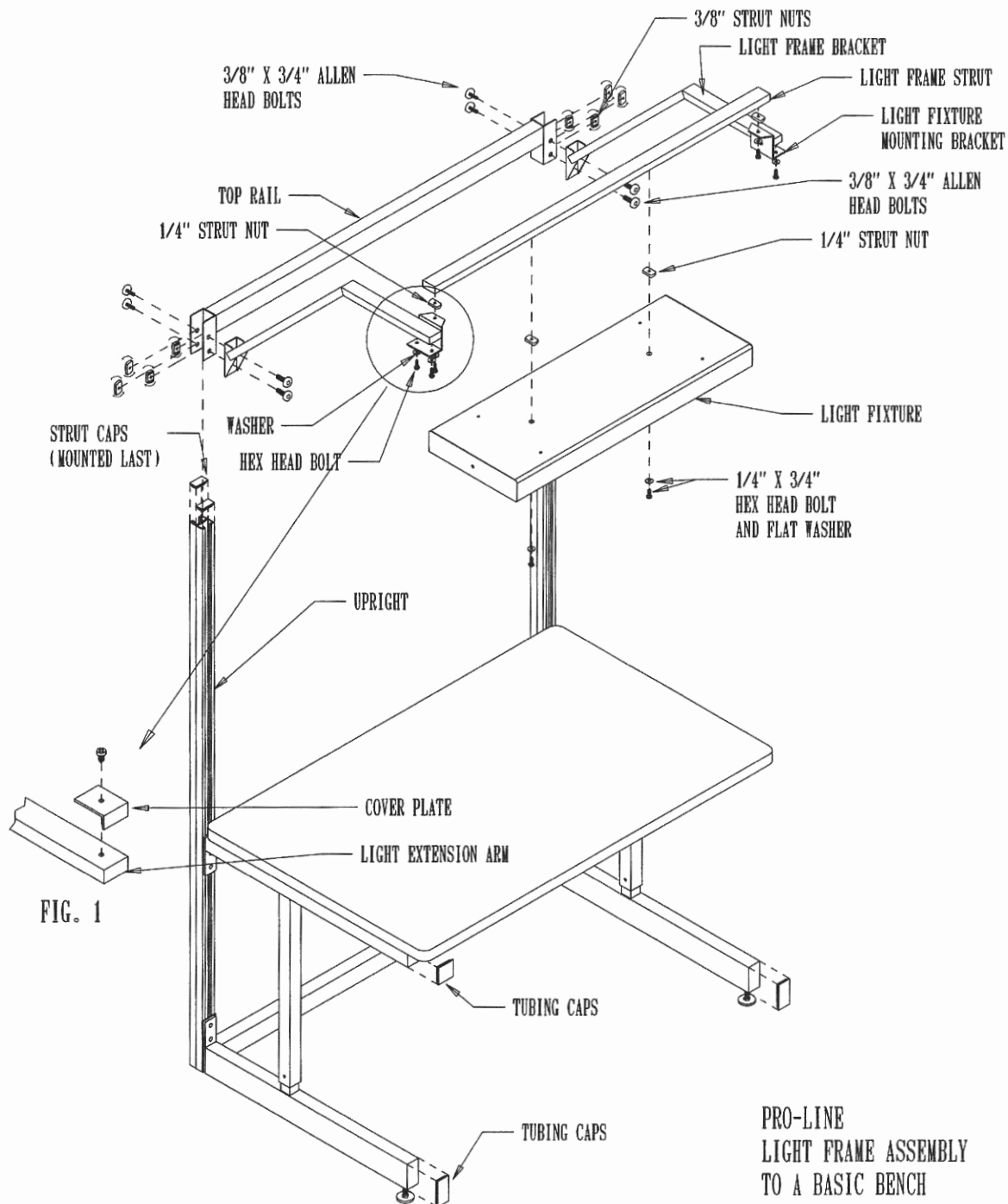
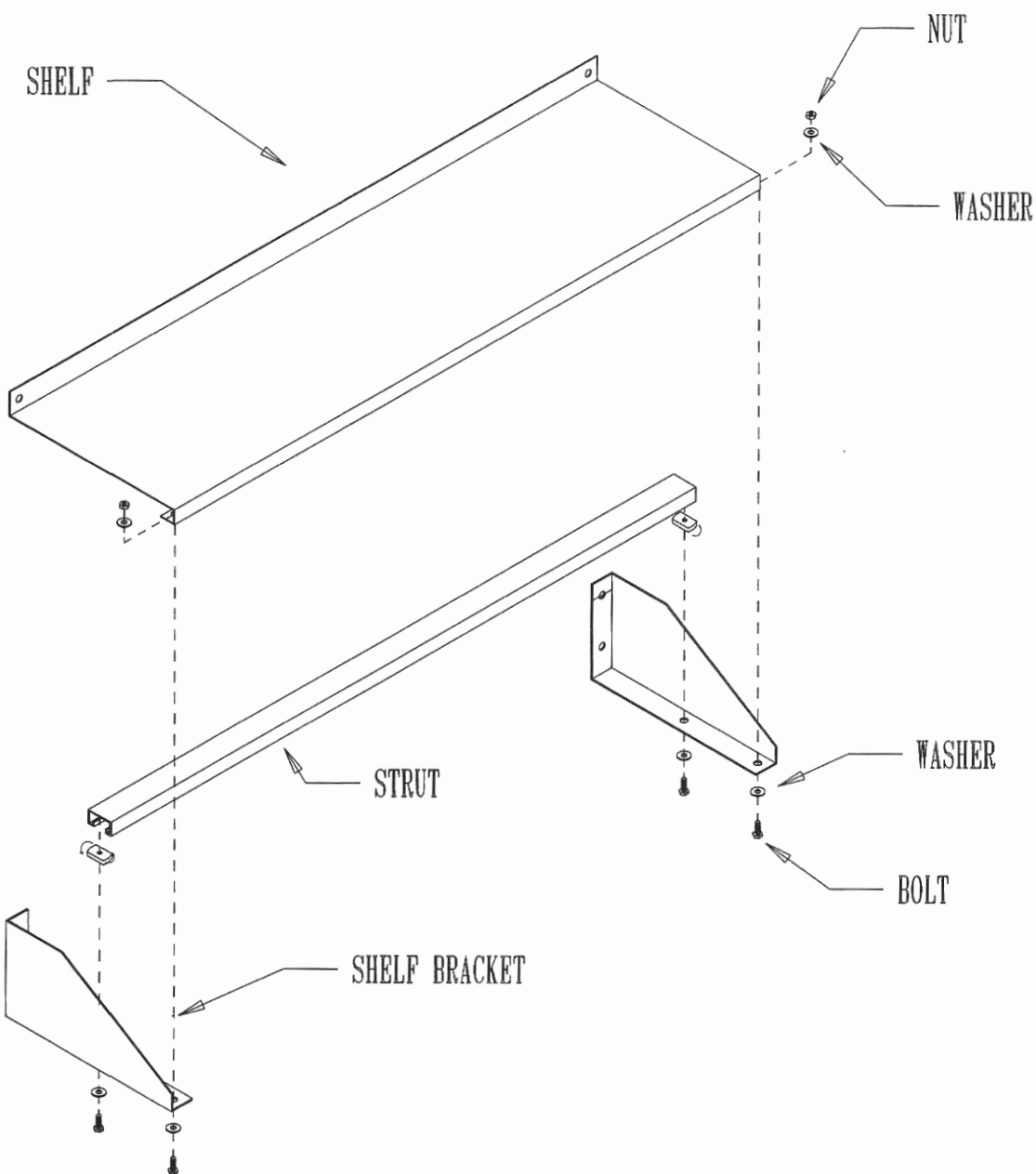


FIG. 1

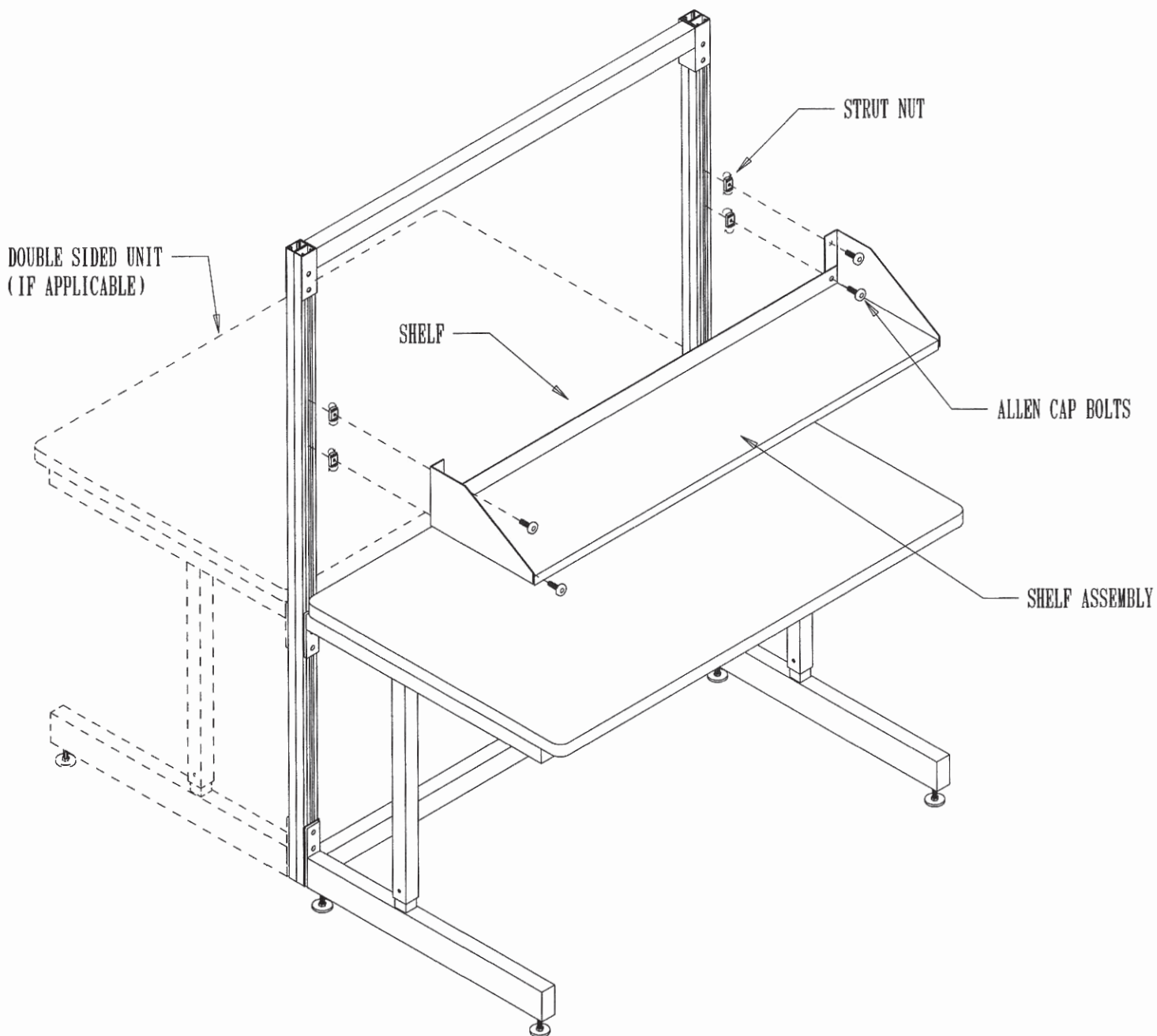
PRO-LINE
LIGHT FRAME ASSEMBLY
TO A BASIC BENCH
DRAWING #A7453R-1
PAGE 1 OF 2

- 1) PLACE THE COVER PLATES OVER LIGHT EXTENSION ARMS, LINE UP THE HOLES AND ATTACH A #12 X 1/2" PHILLIPS PAN HEAD SCREW (SEE FIG.1)
- 2) INSTALL 3/8" X 3/4" ALLEN CAP BOLTS THROUGH LIGHT FRAME BRACKET AND TOP RAIL CHANNEL BRACKET BY THREADING THE 3/8" STRUT NUT ON ONLY BY TWO THREADS.
- 3) INSTALL 3/8" X 3/4" ALLEN CAP BOLTS THROUGH THE BACK OF THE TOP RAIL CHANNEL BRACKET BY THREADING THE 3/8" STRUT NUT ON ONLY BY TWO THREADS.
- 4) SLIDE LIGHT FRAME BRACKETS (WITH THE TOP RAIL ASSEMBLY) DOWN OVER THE TOP OF THE VERTICAL UPRIGHTS AND TIGHTEN.
- 5) SECURE THE LIGHT FRAME STRUT TO THE LIGHT FRAME BRACKETS AT THE DESIRED LOCATION USING 1/4" X 3/4" HEX HEAD BOLTS, 1/4" FLAT WASHERS AND 1/4" STRUT NUTS AS SHOWN.
- 6) ATTACH THE LIGHT FIXTURE MOUNTING BRACKET TO THE LIGHT FRAME BRACKET USING 1/4" X 3/4" HEX HEAD BOLTS FLAT WASHERS AND 1/4" STRUT NUTS AS SHOWN. ATTACH THE LIGHT FRAME STRUT TO THE TOP OF THE LIGHT FIXTURE MOUNTING BRACKET ALSO USING 1/4" X 3/4" HEX HEAD BOLT, FLAT WASHER AND STRUT NUT
- 7) REFER TO DRAWING #A7524 TO OPEN THE LENS COVER PRIOR TO CONTINUING WITH THIS STEP. LOOSELY FASTEN THE 1/4" X 3/4" HEX HEAD BOLTS, 1/4" FLAT WASHERS AND 1/4" STRUT NUTS AS SHOWN TO THE LIGHT FIXTURE.
- 8) LOOSELY ATTACH THE LIGHT FIXTURE TO THE LIGHT FRAME STRUT. CENTER THE LIGHT FIXTURE ASSEMBLY OVER THE WORKSURFACE AND TIGHTEN THE HEX HEAD BOLTS.
- 9) INSTALL TUBING AND STRUT CAPS AS SHOWN USING A HAMMER



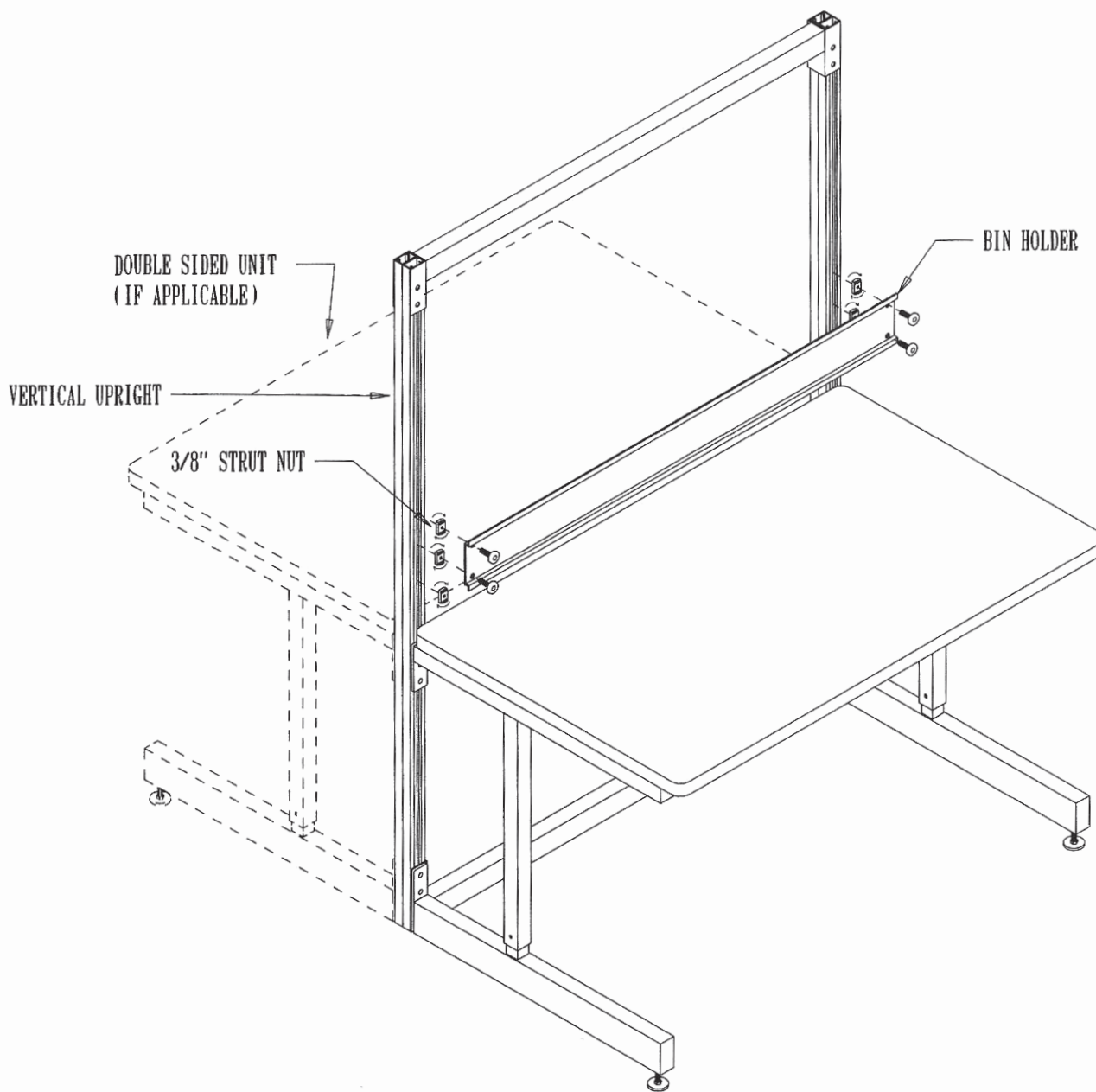
- 1) INSERT 1/4" X 3/4" HEX HEAD BOLT THROUGH 1/4" WASHER AND INTO HOLE LOCATED IN THE CENTER OF THE SHELF BRACKET, AND THREAD THE 1/4" STRUT NUT ON (APPROXIMATELY 2 TURNS)
- 2) PLACE STRUT ONTO SHELF BRACKET MAKING SURE TO INSERT THE STRUT NUT INTO THE STRUT AND TIGHTEN
- 3) REPEAT STEPS 1 AND 2 FOR OTHER SHELF BRACKET
- 4) PLACE SHELF ONTO THE SHELF BRACKET ASSEMBLY AND SECURE IN THE FRONT OF THE ASSEMBLY WITH 1/4" X 3/4" HEX HEAD BOLT, FLAT WASHERS AND KEP NUT AS SHOWN AND TIGHTEN.

PRO-LINE
 ENCLOSED METAL SHELF ASSY
 PAGE 1 OF 2
 DRAWING #A7399



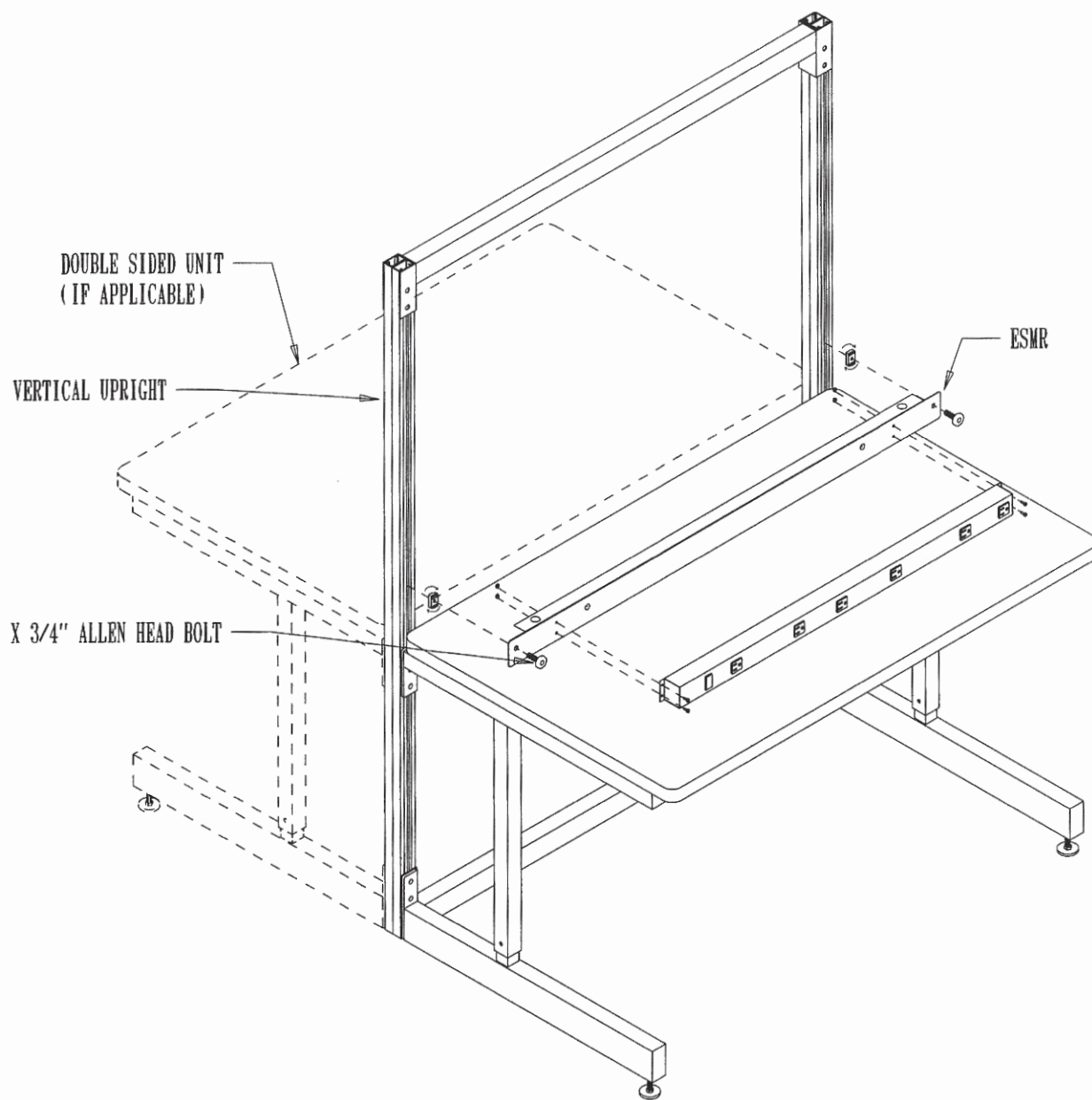
- 1) INSERT 3/8" X 3/4" ROUND ALLEN HEAD BOLT THROUGH SHELF ASSEMBLY AS SHOWN THREADING THE 3/8" STRUT NUTS ON APPROXIMATELY 2 TURNS.
- 2) USING TWO (2) PEOPLE HOLD SHELF ASSEMBLY UP TO THE UPRIGHTS, SET AT THE DESIRED HEIGHT AND SECURE.
- 3) REPEAT ALL PREVIOUS STEPS (IF APPLICABLE) TO COMPLETE A DOUBLE SIDED UNIT.

PRO-LINE
ENCLOSED METAL SHELF
ASSY TO A BASIC BENCH
PAGE 2 OF 2
DRAWING #A7408



- 1) MOUNT BIN HOLDER AT THE DESIRED HEIGHT TO THE VERTICAL UPRIGHTS USING 3/8" X 3/4" ROUND ALLEN HEAD BOLTS AND 3/8" STRUT NUTS.
- 2) REPEAT THE ABOVE STEP (IF APPLICABLE) TO COMPLETE A DOUBLE SIDED UNIT.

PRO-LINE
BASIC BENCH
BIN HOLDER ASSEMBLY
DRAWING #A7512



- 1) SECURE THE ELECTRICAL STRIP TO THE ESMR AS SHOWN USING 6/32" X 3/8" ROUND HEAD MACHINE SCREWS AND 6/32" HEX NUTS.
- 2) MOUNT THE ESMR ASSEMBLY TO THE VERTICAL UPRIGHTS WITH 3/8" X 3/4" ROUND ALLEN HEAD BOLTS AND 3/8" STRUT NUTS.
- 3) REPEAT STEPS 1 AND 2 (IF APPLICABLE) TO COMPLETE A DOUBLE SIDED UNIT.

PRO-LINE
BASIC BENCH
ESMR ASSEMBLY
DRAWING #A7407