

Proline Workstation 72" ESD Laminate Work Surface

The guide on the following page(s) was provided by the supplier.
New Pig Corporation assumes no responsibility, obligation, or
liability in conjunction with the use or misuse of the information.



New Pig

One Pork Avenue
Tipton, PA 16684-0304

newpig.com

North America: **1-800-468-4647**

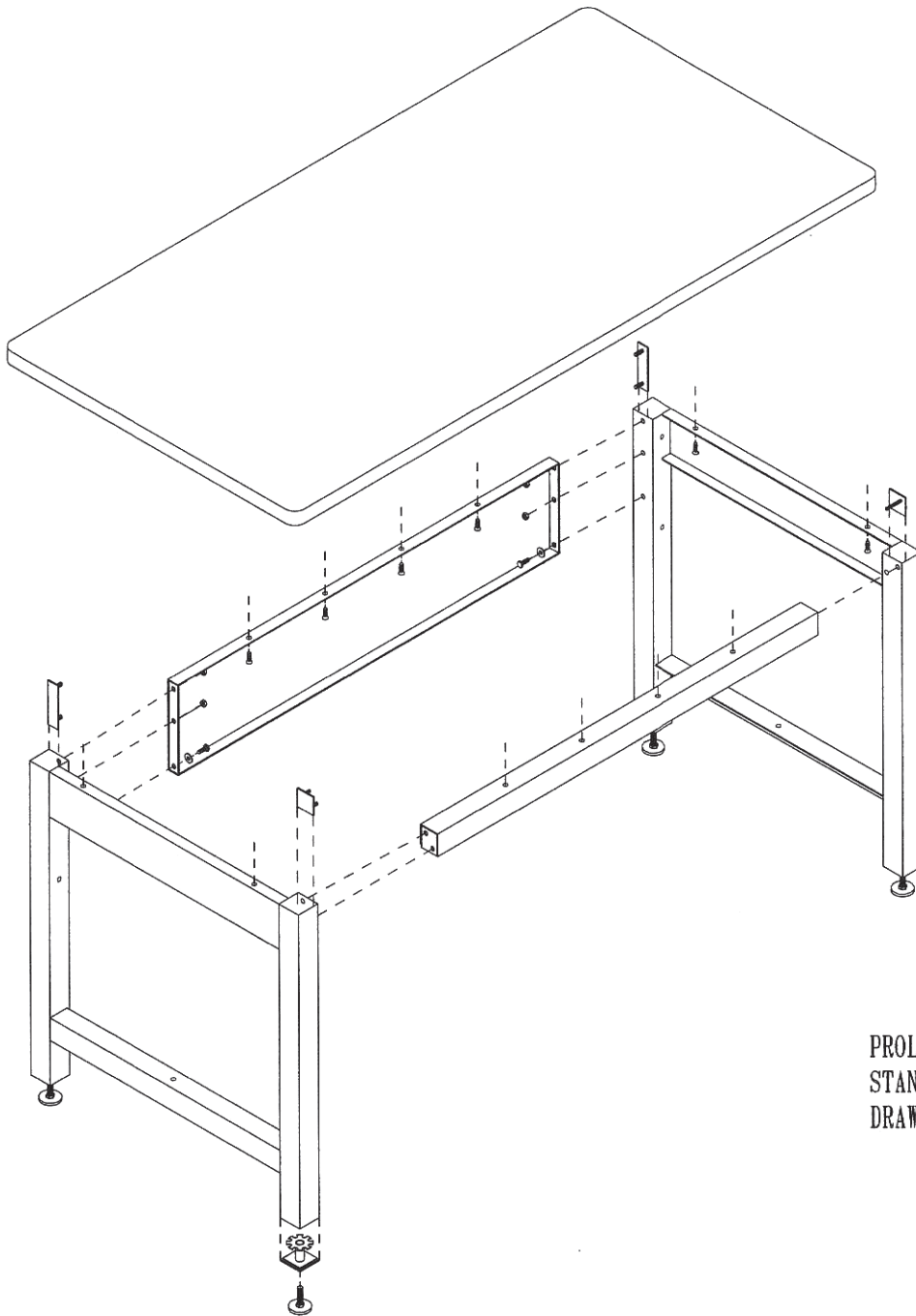
Europe: **+31 (0)76 596 92 50**

China: **+86-21-400 921 5178**

UK: **0800 919 900**

Outside North America: **+1-814-684-0101**

PIG, PIG logo are registered trademarks in USA and other countries. See tm.newpig.com



PROLINE
STANDARD HD BENCH ASSEMBLY
DRAWING # A7163R

1 ASSEMBLE NYLON GLIDE TO SQUARE INSERT FOR EACH LEG. DRIVE SQUARE BUSHING WITH GLIDE INTO BOTTOM OF EACH LEG USING A Mallet OR HAMMER.

2 ASSEMBLE FRONT AND BACK RAIL USING STUD PLATES AND LOCK NUTS PROVIDED. THE 2 X 2 X 1 CHANNEL IS FOR THE FRONT OF THE UNIT AND THE 1 X 8 CHANNEL IS FOR THE REAR THEN ATTACH THE 1/4" - 20 X 3/4" HEX HEAD BOLT AND FLAT WASHER TO THE BOTTOM MOST HOLE IN THE BACK RAIL (BEFORE TIGHTENING NUTS MAKE SURE THAT THE FRONT RAIL AND BACK RAIL ARE FLUSH TO THE TOP OF THE LEG ASSEMBLIES AND PUSHED INWARD APPROXIMATELY 1/8" TO ALLOW THE WORKSURFACE TO BE MOUNTED PROPERLY)
NOTE: HOLES IN RAILS SHOULD BE FACING UP

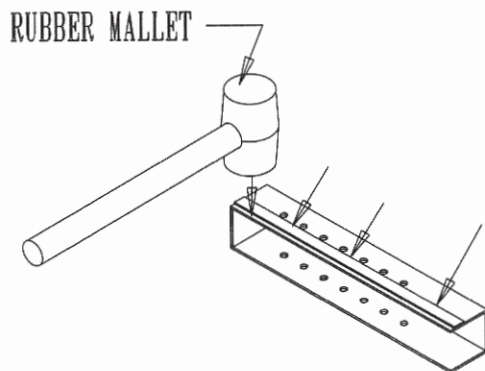
3 PLACE WORKSURFACE BOTTOM UP ON A PROTECTED SURFACE (TO PROTECT LAMINATE FROM SCRATCHES) PLACE ASSEMBLED FRAME ON BACKSIDE OF TOP, LOCATE FLUSH WITH BACK EDGE OF LEG. (SEAM OF EDGING TO BACK). USE #28 DRILL BIT AND PRE-DRILL HOLES 1/2" DEEP AND SCREW #12 X 3/4" SCREWS IN TO SECURE FRAME TO TOP.

NOTE: OVERHANG OF THE TOP SHOULD BE 2 1/2" IN THE FRONT AND THE SIDES (FLUSH WITH BACK)

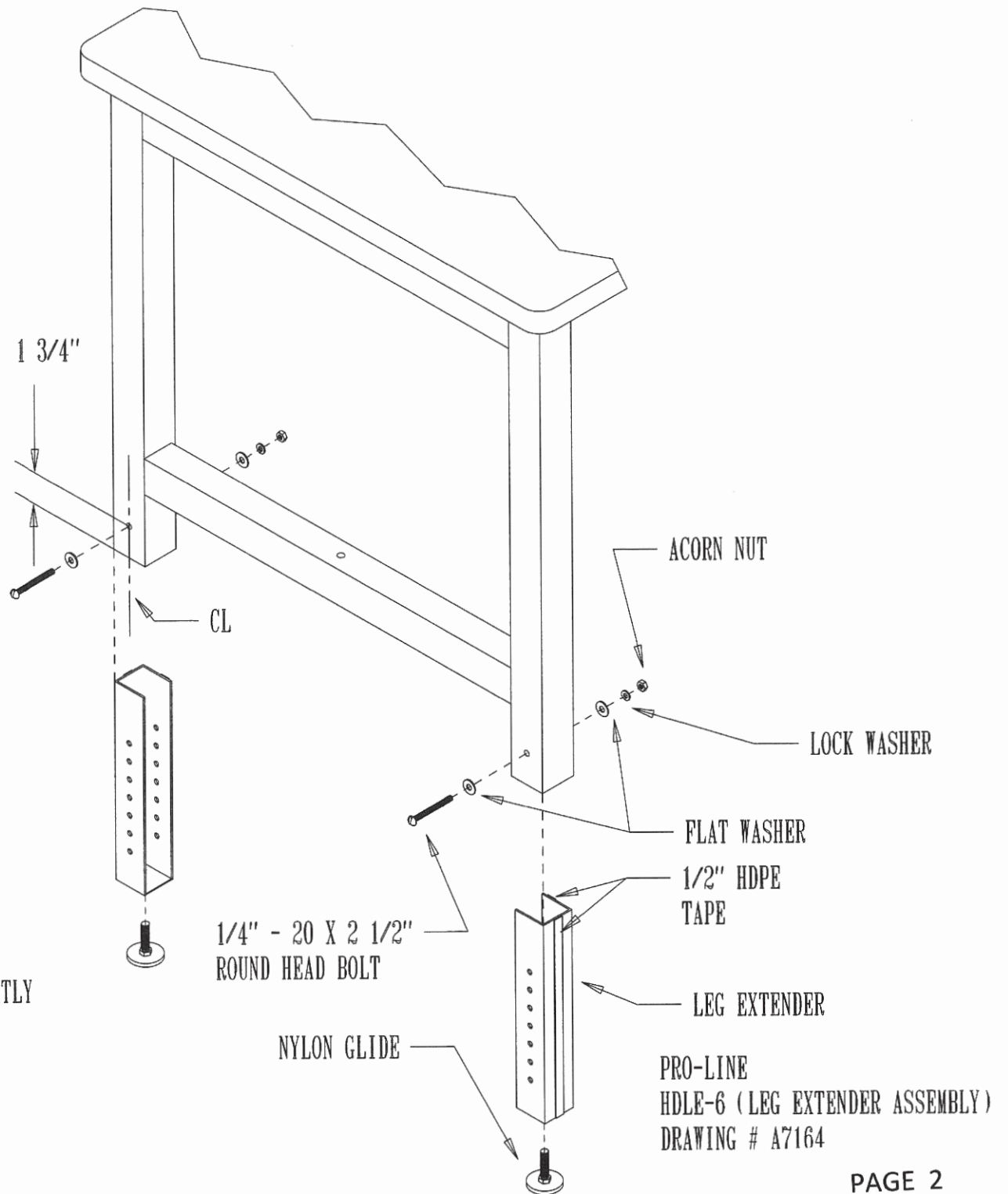
WHEN ASSEMBLING A QUANTITY OF BENCHES AN ELECTRIC SCREW GUN IS RECOMMENDED.

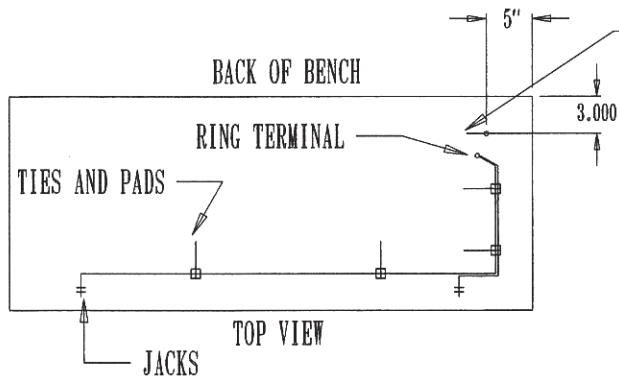
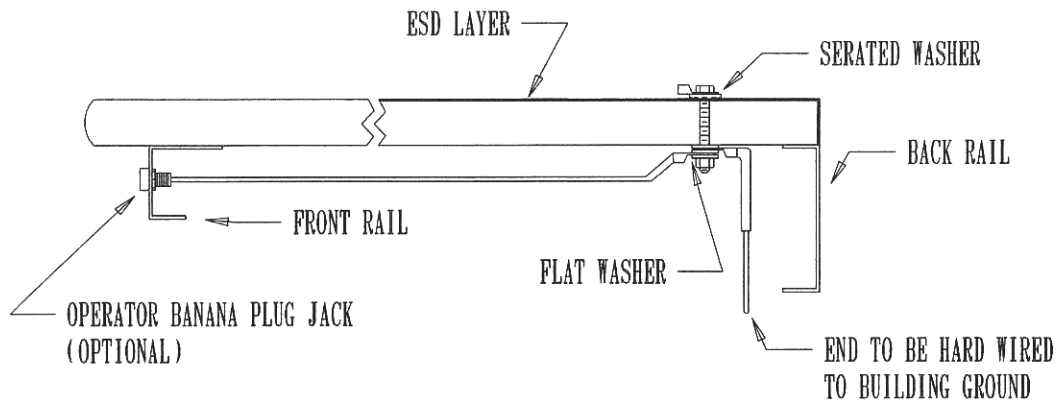
4 SET BENCH UPRIGHT AND ADJUST NYLON GLIDES TO LEVEL

- 1) IF NOT ALREADY PREDRILLED; DRILL A 5/16" HOLE THRU THE LEG AT THE DIMENSIONS SPECIFIED IN THE DRAWING.
- 2) SLEEVE LEG EXTENDER INTO LEG AT DESIRED HEIGHT AND PLACE BOLT ASSEMBLY AS SHOWN AND TIGHTEN.
- 3) SCREW NYLON GLIDES INTO LEG EXTENDERS



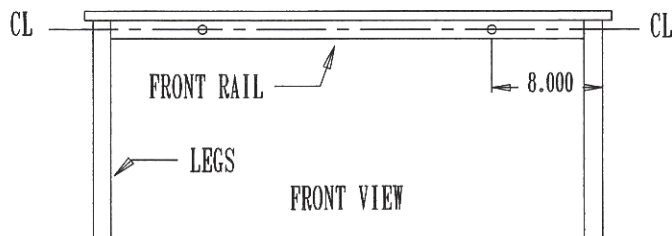
NOTE: IF THE LEG EXTENDERS ARE FITTING TIGHTLY AND ARE NOT SLIDING EASILY INTO THE LEGS, REMOVE EXTENDER AND WITH A RUBBER Mallet HIT ALONG BOTH SIDES OF THE EXTENDER TO SLIGHTLY BEND THE CHANNEL INWARDS.





DRILL 3/8" HOLE (IF NOT ALREADY PREDRILLED) THRU AND INSTALL GROUND BOLT

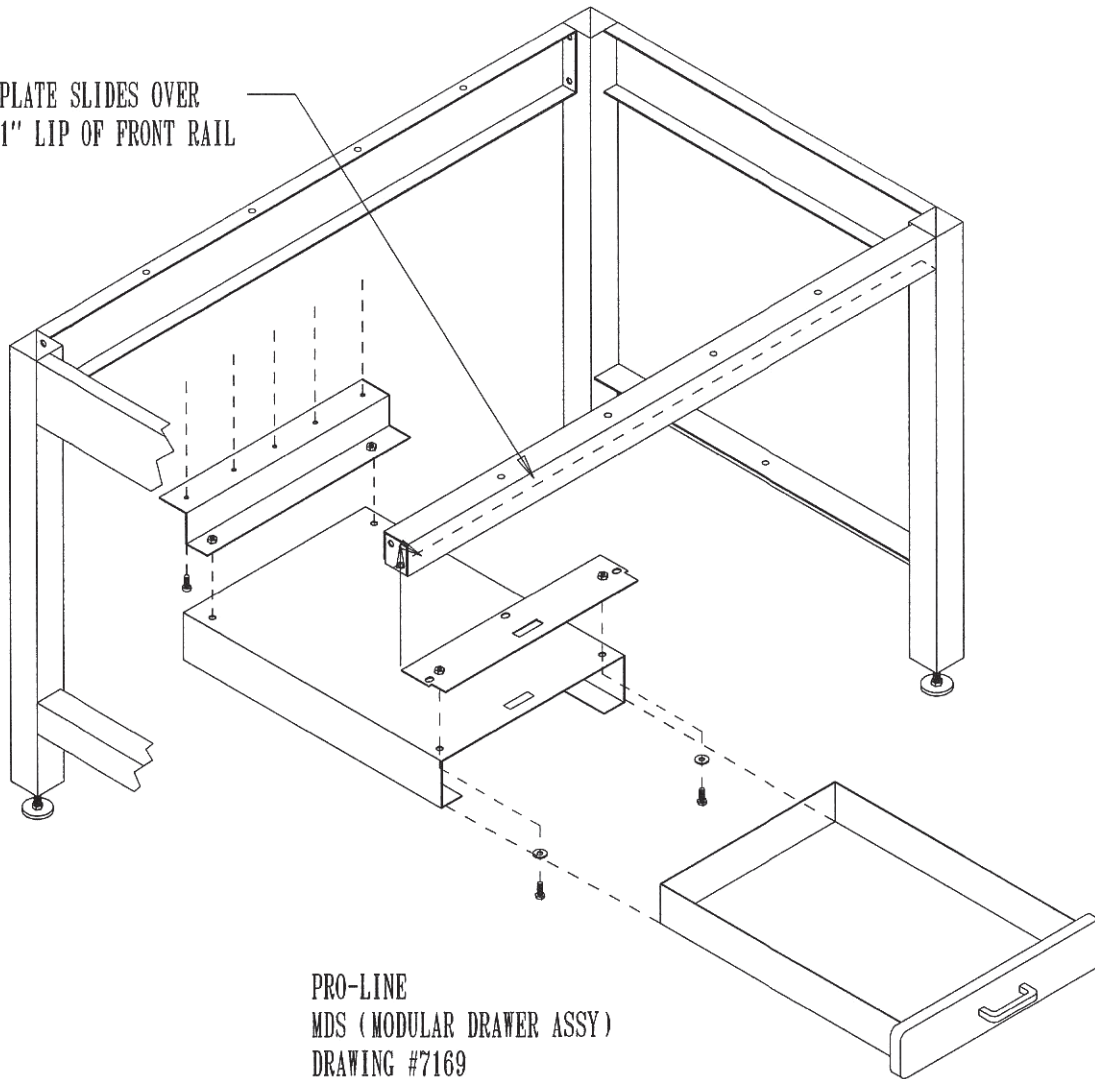
GRAINGER PART NUMBER



PROLINE
SGK - J2 GROUND JACK (FIELD ASSEMBLY)
DRAWING # A7217

- 1) DRILL 3/8" HOLE IN WORKSURFACE PER MEASUREMENTS IN THE TOP VIEW (IF NOT ALREADY PREDRILLED)
- 2) INSTALL 5/16" X 2 1/2" HEX HEAD BOLT, RING TERMINAL, AND SERRATED WASHER THROUGH WORKSURFACE. ON UNDERSIDE OF WORKSURFACE INSTALL WASHER, RING TERMINAL, WASHER, RING TERMINAL, WASHER, AND NUT IN THIS ORDER AND TIGHTEN
- 3) MEASURING APPROX. 8" IN FROM OUTSIDE OF OF LEG AND 1" DOWN FROM TOP OF WORKSURFACE (SEE FRONT VIEW) DRILL FRONT RAIL WITH 5/16" DIA. DRILL BIT
- 4) MOUNT JACKS INTO FRONT RAIL USING NUTS PROVIDED
- 5) RUN WIRES IN MANNER SHOWN IN TOP VIEW USING WIRE TIES AND SELF STICK PADS (4 TO 6 PER BENCH) NOTE : PADS STICK BETTER TO METAL SURFACES
- 6) CUT WIRES TO APPROPRIATE LENGTH BY PULLING WIRES (TO REMOVE EXCESS SLACK) TOWARDS THE HOLE IN THE WORKSURFACE AND ADDING 1" TO THAT. STRIP WIRES BACK 1/4" AND INSTALL THE RING TERMINAL BY CRIMPING IT TO BOTH EXPOSED WIRES AT THE SAME TIME

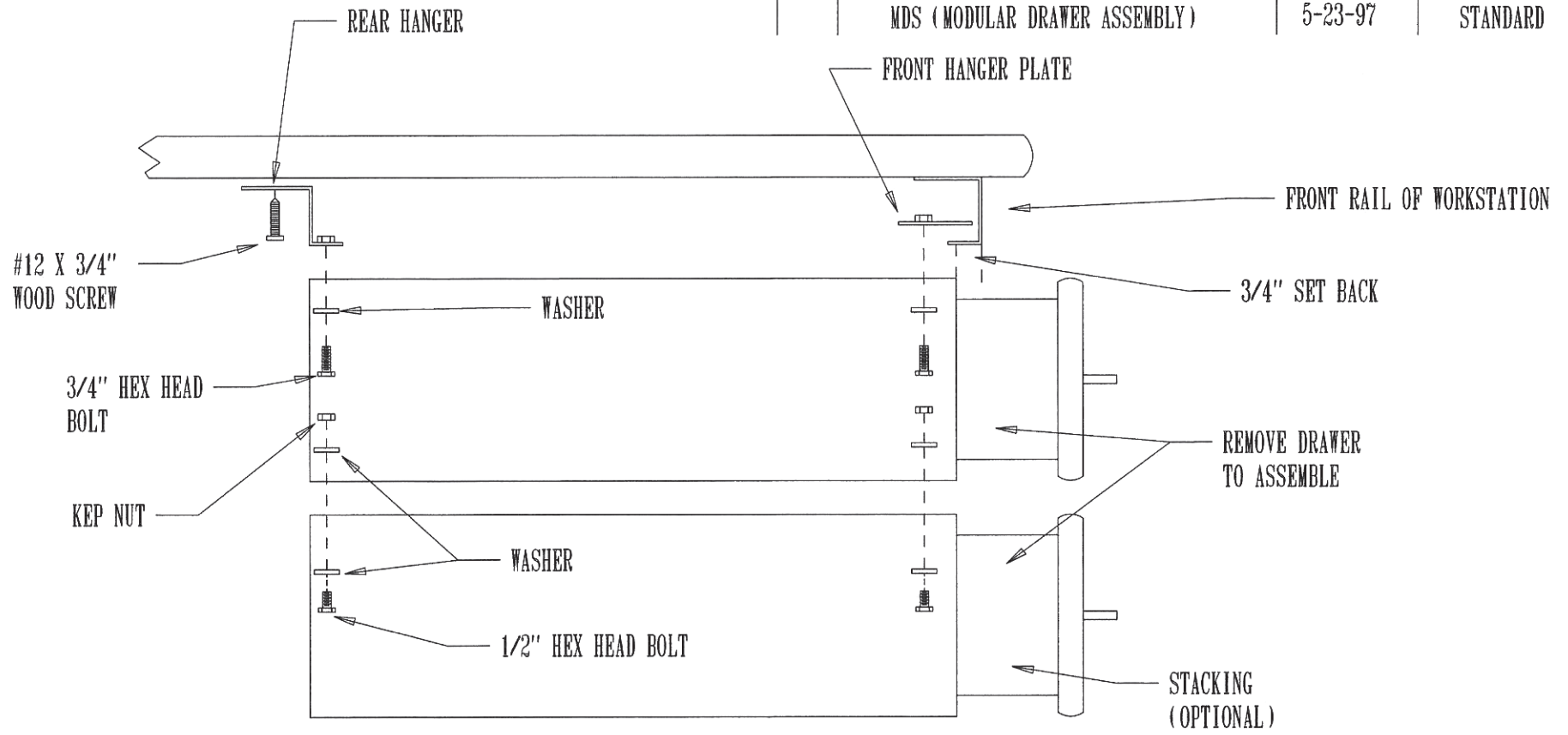
PLATE SLIDES OVER
1" LIP OF FRONT RAIL



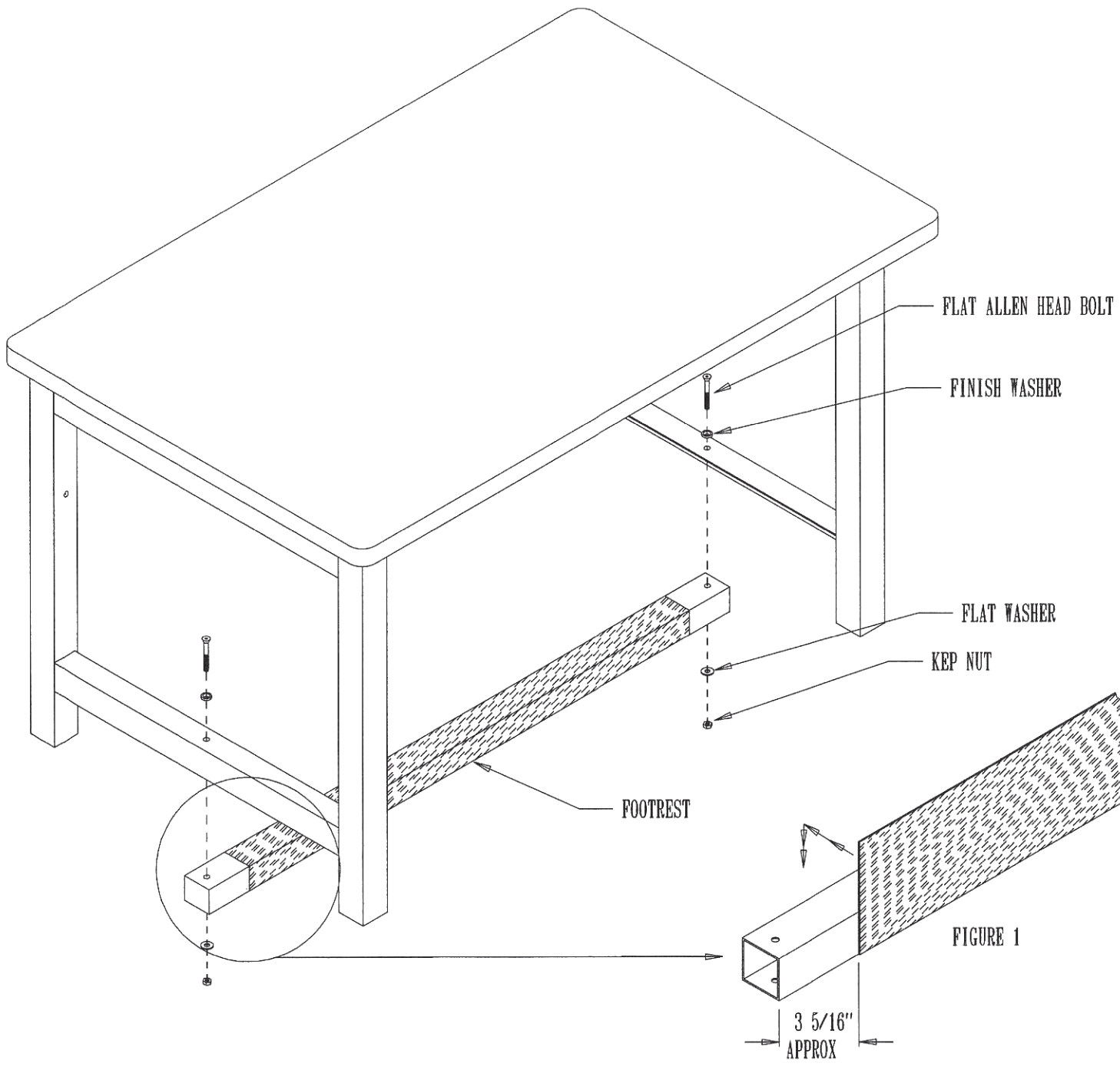
PRO-LINE
MDS (MODULAR DRAWER ASSY)
DRAWING #7169

- 1) REMOVE DRAWER FROM HOUSING
 - 2) MOUNT BRACKETS TO DRAWER USING
1/4" X 3/4" HEX HEAD BOLTS AND WASHERS
AS SHOWN
(TIGHTEN BOLTS ON REAR BRACKET BUT LEAVE BOLTS ON FRONT PLATE LOOSE)
 - 3) SLIDE HOUSING OVER FRONT RAIL OF
BENCH SANDWICHING FRONT RAIL BETWEEN
HOUSING AND PLATE
 - 4) SET DRAWER HOUSING A MINIMUM OF 1"
AWAY FROM LEG AND 3/4" SET BACK
FROM FRONT RAIL
 - 5) INSTALL FIVE (5) #12 PHILLIPS PAN HEAD
SCREWS THROUGH REAR BRACKET AND
INTO BOTTOM OF THE WORKSURFACE.
TIGHTEN THE BOLTS SECURING THE FRONT
HANGING PLATE
- ** NOTE **** DRAWERS ARE MORE EASILY
MOUNTED WHEN BENCH IS FLIPPED UPSIDE DOWN

REVISIONS			
REV	DESCRIPTION	DATE	APPROVED
	MDS (MODULAR DRAWER ASSEMBLY)	5-23-97	STANDARD



				MICHAEL SUPLINSKAS			
				PRO-LINE			
		SIZE	FSCM NO.	DWG NO.	A7073		REV
		SCALE					



- 1) PEEL WAX BACKING PAPER OFF ADHESIVE SIDE OF FOOTREST GUARD TAPE.
- 2) CENTER FOOTGUARD TAPE ALONG LENGTH OF FOOTREST TUBE STARTING AS SHOWN IN FIGURE 1
- 3) WITH A SMALL BLOCK OF WOOD PRESS AND RUN BACK AND FORTH ALONG LENGTH OF TAPE FOR GOOD ADHESION.
- 4) WORK YOUR WAY AROUND THE TUBE ONE SIDE AT A TIME.
- 5) ASSEMBLE FOOTREST AS SHOWN USING 1/4" - 20 X 2 1/4" FLAT ALLEN HEAD BOLT, FINISH WASHER, FLAT WASHER AND KEP NUTS PROVIDED .

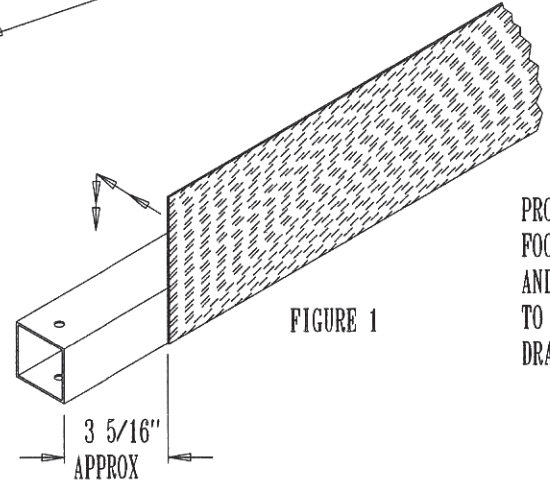


FIGURE 1

PRO-LINE
 FOOTREST GUARD
 AND FOOTREST ASSEMBLY
 TO AN HD BENCH
 DRAWING #A7492

- 1) MOUNT 1/4" X 2 3/4" HEX HEAD BOLTS THROUGH REAR LEGS AS SHOWN
- 2) TURN 1/4" STRUT NUTS ON APPROXIMATELY TWO (2) THREADS
- 3) HOLD UPRIGHTS AGAINST BACK OF REAR LEGS
- 4) PUSH BOLT ASSEMBLY INTO UPRIGHTS AND TURN CLOCKWISE TO TIGHTEN

12" OF THE UPRIGHT MUST BE LOCATED BELOW THE TOP OF THE WORKSURFACE FOR STABILITY AND SAFETY

WORKSURFACE MUST BE FLUSH WITH BACK OF LEGS BEFORE MOUNTING UPRIGHTS

1/4" - 20 STRUT NUTS

TOP SHOWN TRANSPARENT FOR CLARITY

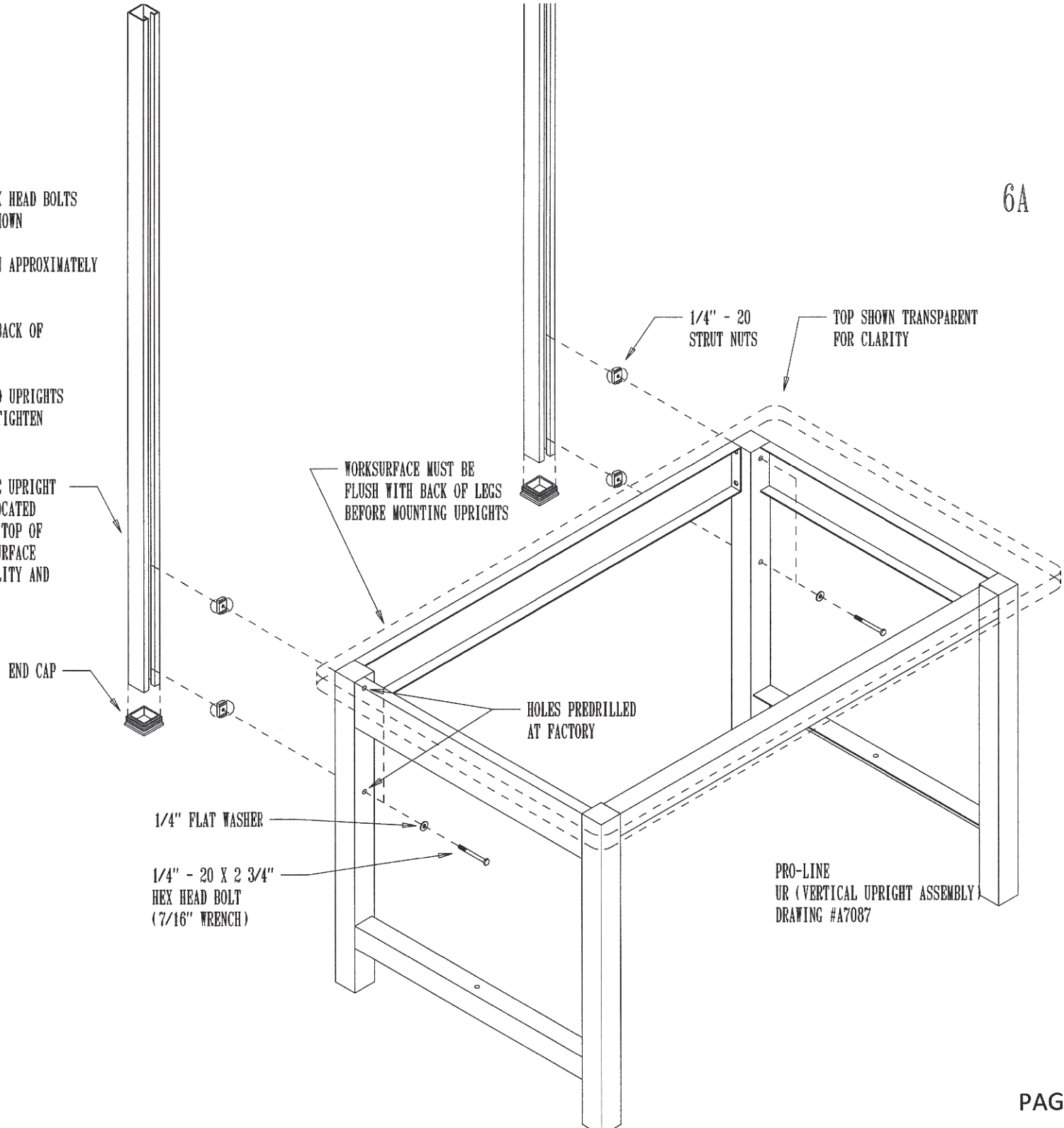
END CAP

HOLES PREDRILLED AT FACTORY

1/4" FLAT WASHER

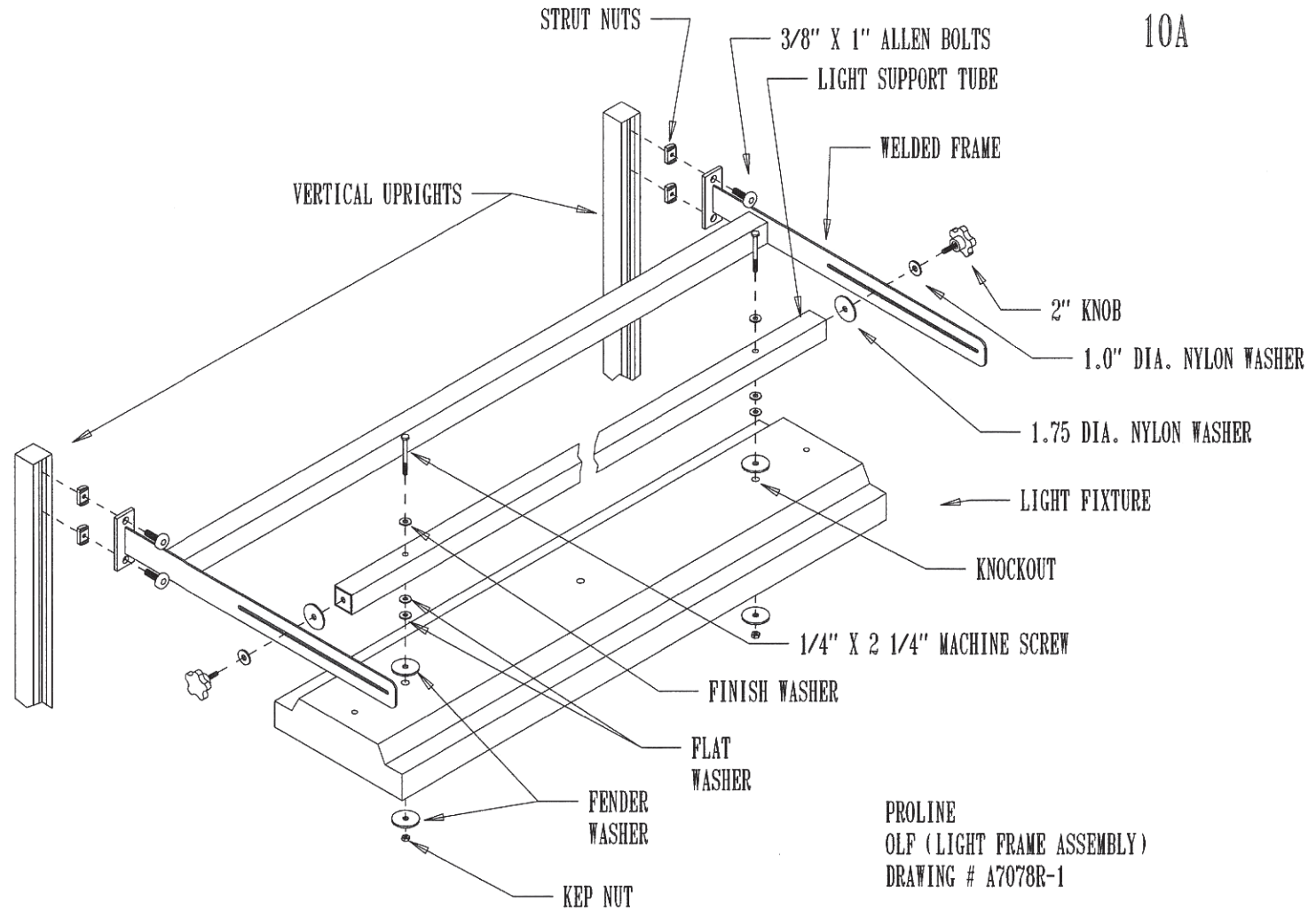
1/4" - 20 X 2 3/4" HEX HEAD BOLT (7/16" WRENCH)

PRO-LINE
UR (VERTICAL UPRIGHT ASSEMBLY)
DRAWING #A7087



- 1) LOCATE AND REMOVE THE KNOCKOUTS THAT ARE CLOSEST TO THE ENDS OF THE LIGHT FIXTURE
- 2) FASTEN LIGHT FIXTURE TO LIGHT SUPPORT TUBE AS SHOWN WITH 1/4" X 2 1/4" MACHINE SCREW, FINISH WASHER, (2) FLAT WASHERS, (2) FENDER WASHERS AND A KEP NUT.
- 3) ATTACH THE LIGHT FRAME TO VERTICAL UPRIGHTS USING 3/8" X 1" ALLEN HEAD BOLTS AND STRUT NUTS.
- 4) ASSEMBLE THE 2" KNOBS THROUGH WELDED FRAME AND INTO THREADED INSERTS IN TUBE ENDS. (USE WASHERS AS SHOWN).

NOTE: IT IS SUGESTED THAT 2 PEOPLE PERFORM THE OPERATION OF MOUNTING LIGHT TUBE TO FRAME.

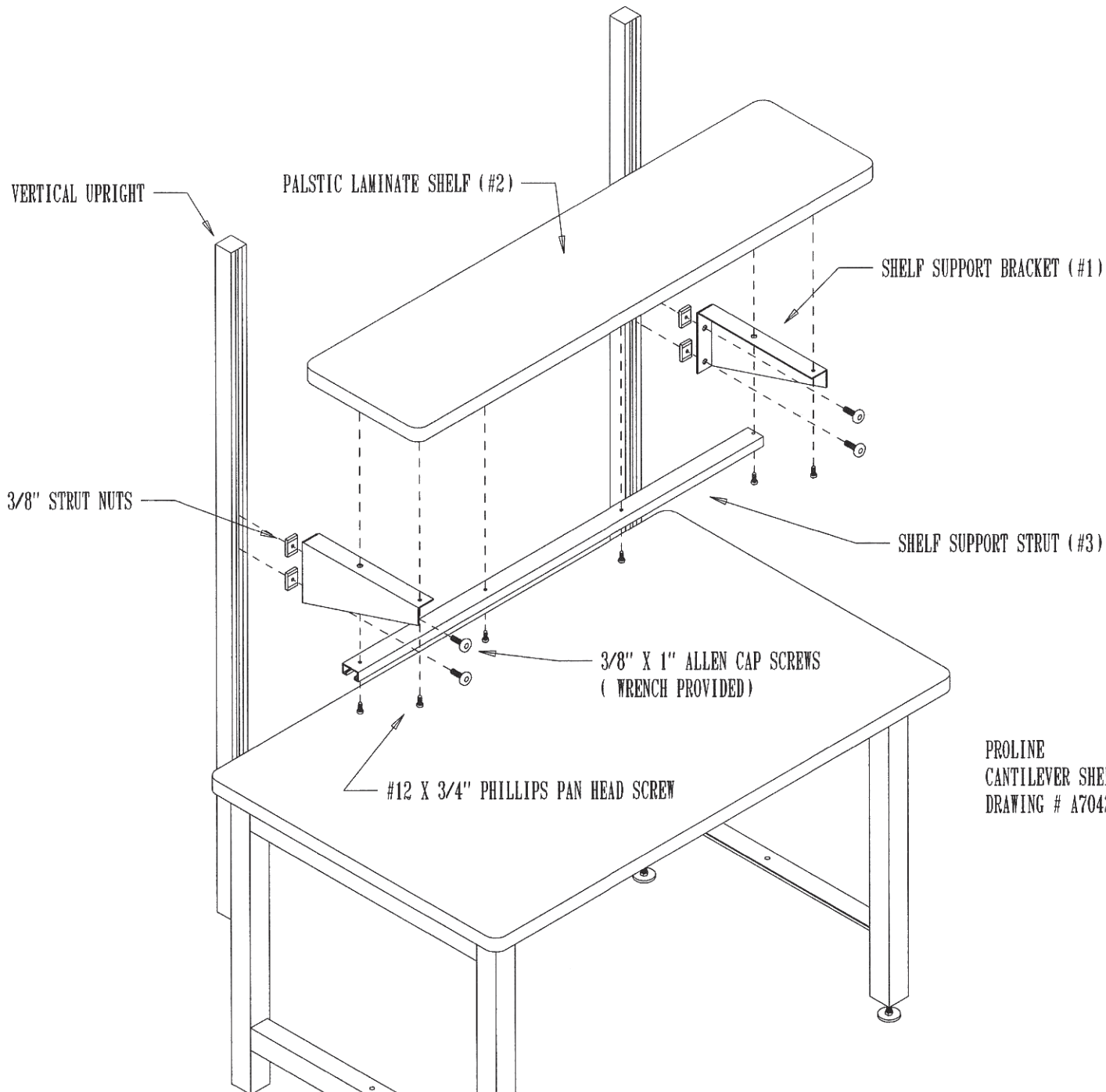


BULB REQUIREMENTS

48" FIXTURES F32 T8

36" FIXTURES F30 T8
F25 T8

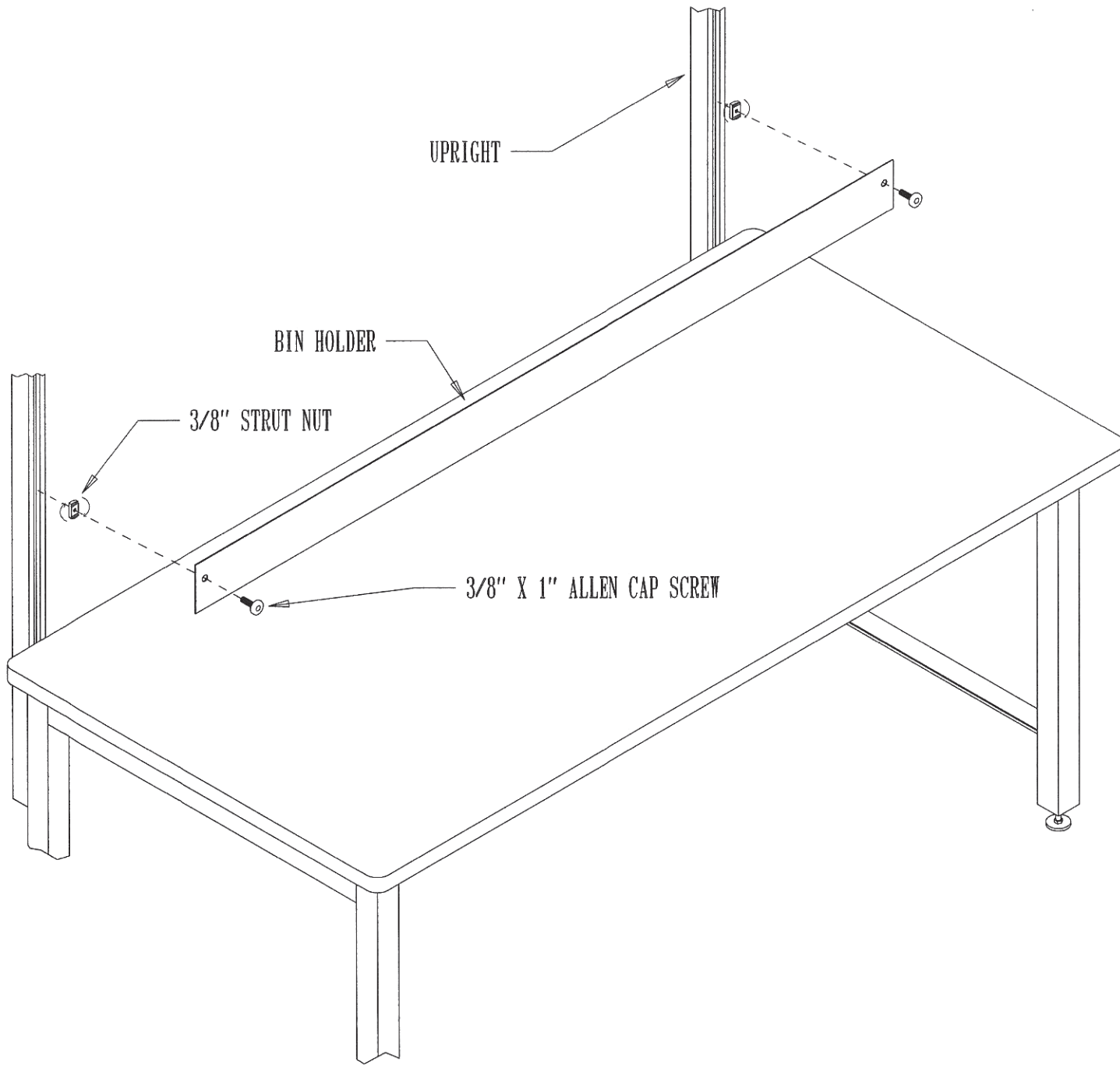
PROLINE
OLF (LIGHT FRAME ASSEMBLY)
DRAWING # A7078R-1



TOOLS REQUIRED:
 1 SCREW GUN WITH #3 PHILIPS HEAD TIP
 7/32" WRENCH

- 1) CHOOSE DESIRED HEIGHT ON UPRIGHTS AND MOUNT SHELF BRACKETS TO THE UPRIGHTS WITH 3/8" X 1" ALLEN CAP BOLTS AND STRUT NUTS PROVIDED
- 2) LAY PLASTIC LAMINATED SHELF ACROSS SHELF SUPPORT BRACKETS WITH EQUAL OVERHANG ON LEFT AND RIGHT SIDES
- 3) WITH 2 PEOPLE (ONE ON EACH SIDE OF SHELF), HOLD SHELF SUPPORT STRUT AGAINST SHELF SUPPORT BRACKETS AND INSTALL #12 X 3/4" PHILLIPS PAN HEAD SCREWS IN EACH END. THEN PROCEED TO INSTALL THE REMAINDER OF THE PAN HEAD SCREWS

PROLINE
 CANTILEVER SHELF ASSEMBLY
 DRAWING # A7042

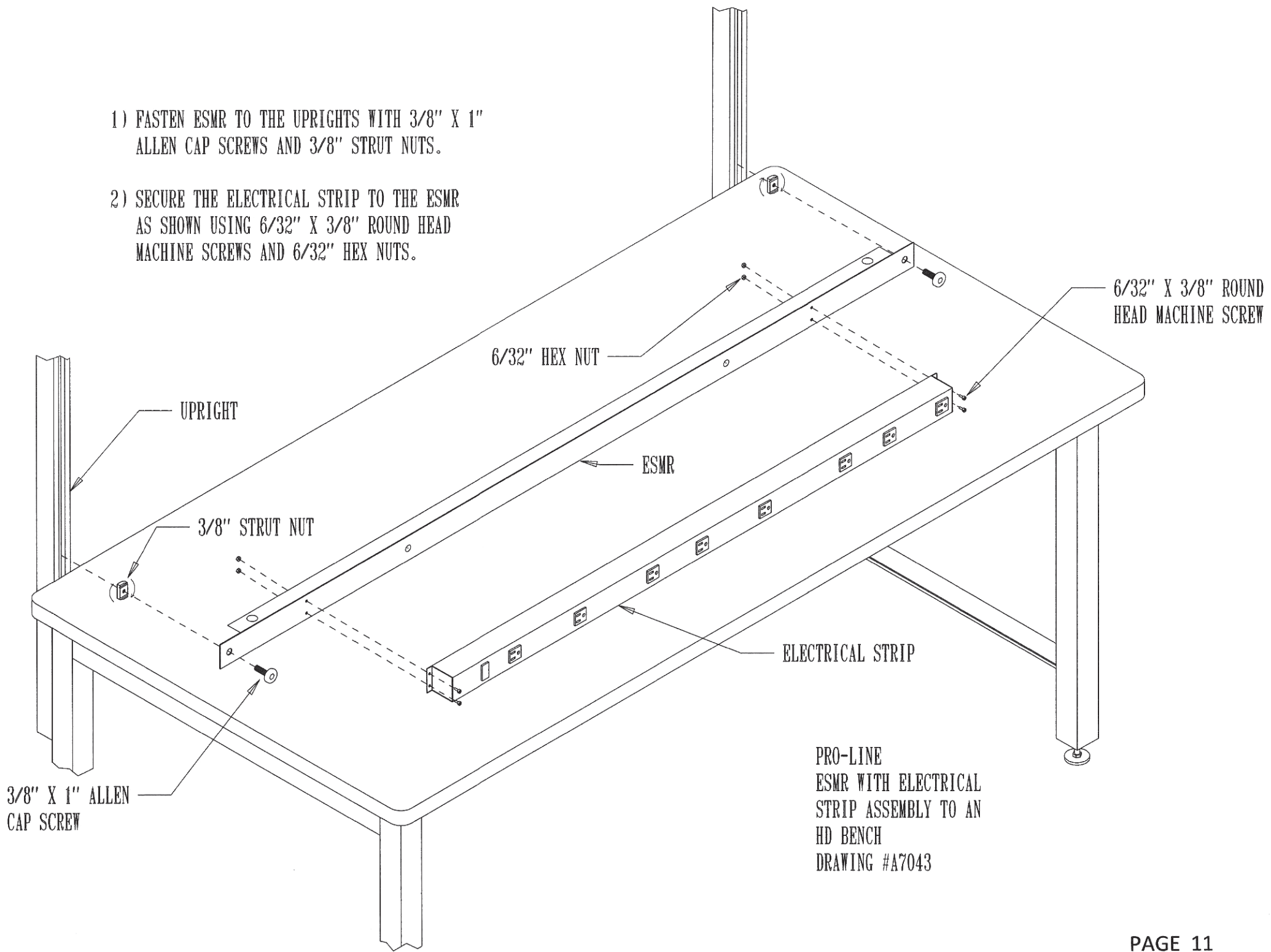


- 1) FASTEN BIN HOLDER TO UPRIGHTS AT DESIRED HEIGHT USING 3/8" X 1" ALLEN CAP SREWS AND 3/8" STRUT NUTS

PRO-LINE
BIN HOLDER ASSEMBLY
TO AN HD BENCH
DRAWING #A7449

1) FASTEN ESMR TO THE UPRIGHTS WITH 3/8" X 1" ALLEN CAP SCREWS AND 3/8" STRUT NUTS.

2) SECURE THE ELECTRICAL STRIP TO THE ESMR AS SHOWN USING 6/32" X 3/8" ROUND HEAD MACHINE SCREWS AND 6/32" HEX NUTS.



PRO-LINE
ESMR WITH ELECTRICAL
STRIP ASSEMBLY TO AN
HD BENCH
DRAWING #A7043