



PIG Frameless Storm Drain Filter

New Pig

One Pork Avenue
Tipton, PA 16684-0304

newpig.com

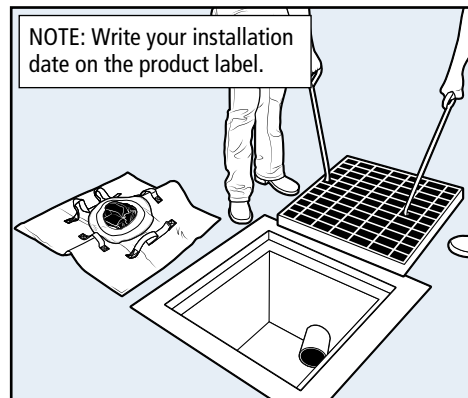
North America:
1-800-468-4647

Europe:
+31 (0)76 596 92 50

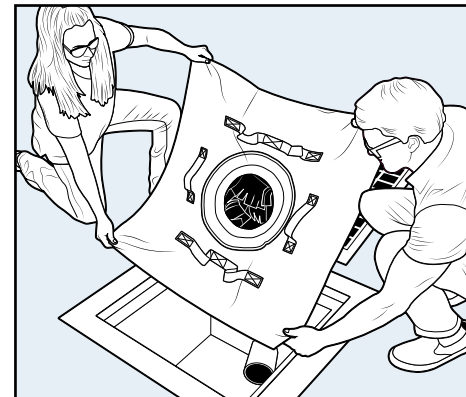
UK:
0800 919 900

China:
+86-21-400 921 5178

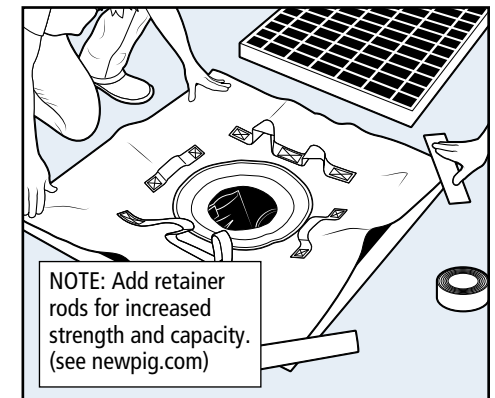
Outside North America:
+1-814-684-0101



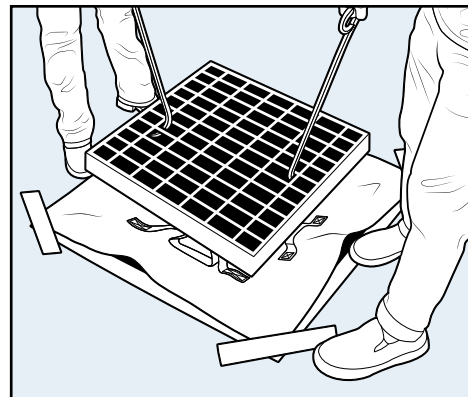
1. Remove drain grate and clean any sediment or debris from grate lip and ground surface.



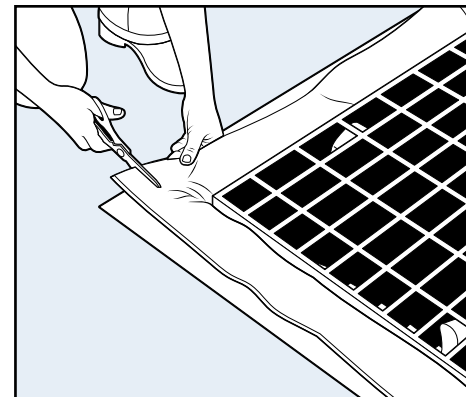
2. Place Drain Filter over opening. Filter fabric should overlap drain at least 3" on all sides.



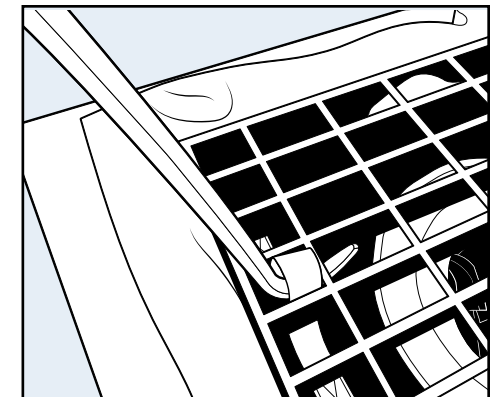
3. Tape down all corners to temporarily hold Drain Filter in place.



4. Replace grate, keeping it level as you lower evenly onto Drain Filter.



5. Remove tape and trim excess fabric, keeping roughly 3" of material on all sides.



TIP: When it's time to empty or changeout your filter, remove the grate and filter at the same time by feeding grate hook through hi-viz strap before lifting.

PIG, PIG logo are registered trademarks in USA and other countries. See tm.newpig.com