



PIG Storm Drain Filter

New Pig

One Pork Avenue
Tipton, PA 16684-0304

newpig.com

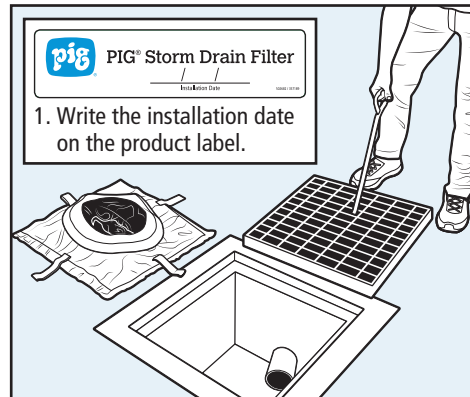
North America:
1-800-468-4647

Europe:
+31 (0)76 596 92 50

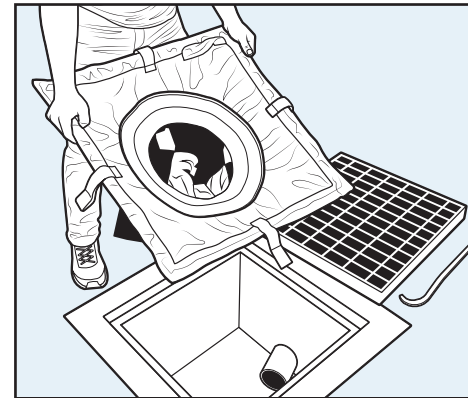
UK:
0800 919 900

China:
+86-21-400 921 5178

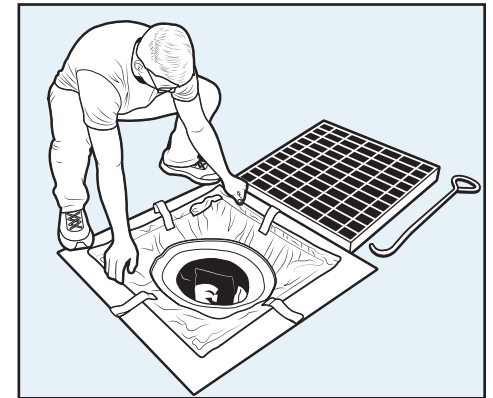
Outside North America:
+1-814-684-0101



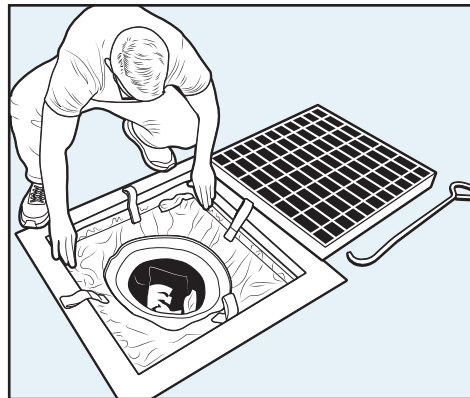
2. Remove drain grate and clean any existing sediment off grate lip inside of storm drain.



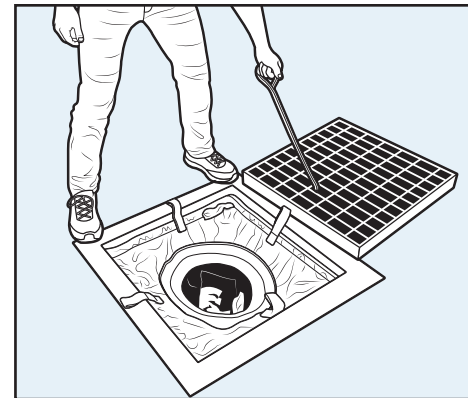
3. Expand or collapse the PIG Storm Drain Filter frame to fit intended storm drain size.



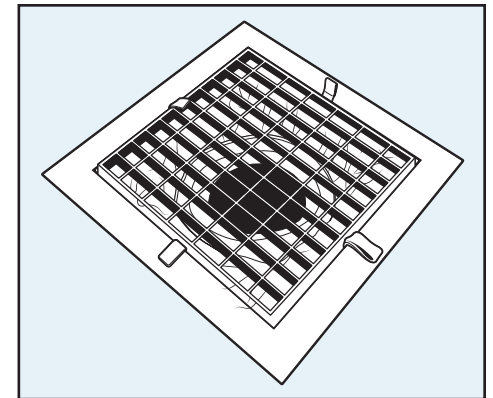
4. Place the PIG Storm Drain Filter directly on grate lip inside of storm drain.



5. Pull frame flush against walls of storm drain to ensure a tight seal.



6. Replace drain grate overtop installed PIG Storm Drain Filter.



7. For best visibility and to keep filter securely in place, ensure green straps are not caught beneath storm drain grate.

PIG, PIG logo are registered trademarks
in USA and other countries. See
tm.newpig.com