

PIG Waste Compactor Manual

DRM655

Air Operated Spark-Resistant Waste Compactor



New Pig

One Pork Avenue
Tipton, PA 16684-0304

newpig.com

North America: **1-800-468-4647**

Europe: **+31 (0)76 596 92 50**

China: **+86-21-400 921 5178**

PIG, PIG logo are registered trademarks in USA and other countries. See tm.newpig.com

UK: **0800 919 900**

Outside North America: **+1-814-684-0101**

502826 / 359236

Table of Contents

Introduction	Page 3
--------------------	--------

PIG Waste Compactor

1 Setup Instructions	Page 4
2 Operating Instructions	Page 5
3 Product Data Sheets	Page 6
3 Exploded View for DRM655	Page 7
5 Parts List for Compactor	Pages 8–10
6 Air Schematics	Page 10
7 Preventive Maintenance	Page 11
8 Troubleshooting Guide	Page 11

Pump Kit for PIG Waste Compactor

1 Optional Waste Pump	Page 12
2 Parts List for Optional Waste Pump	Page 13

Limited Warranty

Service and Limited Warranty	Page 14
------------------------------------	---------

Introduction

Waste disposal is one of the most challenging issues industries face today. The average disposal cost for a 55-gallon drum can range from \$200–\$700. Further complicating the disposal picture is the shrinking number of active landfills. As a result, companies are pursuing innovative ways to reduce their disposal costs.

In 1994, New Pig developed the PIG Waste Compactor to compact absorbents and other soft wastes. The Compactor significantly reduced waste to a fraction of its original volume resulting in dramatically lower disposal costs. The original pump kit captures segregated liquids for reuse or recycling.

To determine just how much money a PIG Waste Compactor could save you, we conducted a research study. Our results found that 100% of users significantly reduced the number of drums they sent out for disposal. Compaction ratios ranged from a high of 6:1 to a low of 2:1.

New Pig's Product Development Team has designed the following features to ensure safe operation: an improved ram guard completely encloses the top of the drum, and the drum doors interlock to prevent access during operation.

DISCLAIMER: Wringing or compacting waste may be considered "treatment" by RCRA regulations. You may require a permit to use this product. Please consult with your state EPA waste management office prior to use.

Use your PIG Waste Compactor to crush:

- Absorbents
- Rags
- Plastic
- Paper
- Cardboard
- Paper filters
- Other soft materials

(not recommended for wood, metal or other hard materials)

PIG Waste Compactor

1 Setup Instructions

1. Remove PIG Waste Compactor from pallet and place on floor.
2. Mount the compactor to the floor using the predrilled holes in the base. Up to ½" floor anchors can be used. Floor anchoring not required for operation (anchors not included).
3. Remove the pipe plug from the air intake pipe located on the back of the unit, attached to the side of the Rear Pivot (Part #19 on exploded view).
4. Screw a male air connect chuck into the ¾" pipe.
5. Attach air chuck and air line (both not included) to male air connect. Max of 120 psi
6. Ground unit to earth ground with provided grounding wire.

Note: An in-line air filter/lubricator/oiler (included) should be used with this unit.

2 Operating Instructions

Always wear the proper safety equipment when operating this unit.



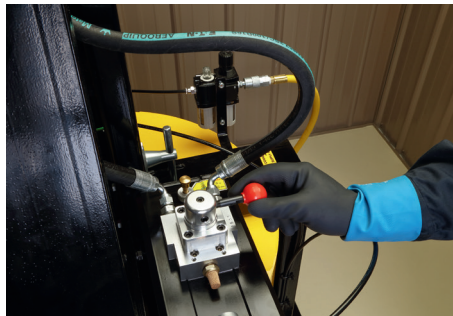
1. Open safety cover.



2. Tilt unit back with drum in place to facilitate loading.



3. Return to upright locked position and close safety cover.



4. Move directional lever on air hydraulic pump to the down position and depress foot pedal to compact. Continue to compact until the pump stops (reaching maximum pressure).



5. To raise the ram, release foot pedal to stop, move directional lever on air hydraulic pump to the up position and depress foot pedal.

Note: Compactor will not operate if the unit is not in the upright position or safety cover is not closed.

3 Product Data Sheet

PIG Spark-Resistant Air Compactor Item# DRM655

DESCRIPTION

An air-operated, spark-resistant compaction device used to reduce waste to a fraction of its original volume.

Packaging: 1 Box/Pallet

Color: Black/Silver/Yellow

Weight: 486 lbs.

Per Pallet: 1

Dimensions:

Overall Dimensions — 31½" W x 67⅛" H x 38" D

Composition:

Aluminum: Ram, Base, Retaining Pin, Ram Guard, Surround Shield

Frame: Hot Rolled Steel

Minimum Air Required: 80 psi, 10 cfm Air

Maximum Air Pressure: 120 psi

Average Cycle Time*: 2 minutes (1 minute down, 1 minute up)

* May vary according to air pressure

FEATURES/BENEFITS

- All components that a drum may come in contact with are made of aluminum with air-driven hydraulics — Spark-resistant.
- Compacts up to 6 to 1 (depending on material) — Reduces disposal costs by having fewer drums to dispose of.
- Use with absorbents, rags, paper, or anything that is “soft” rather than “hard” and non-metallic — Minimizes waste.
- Air-driven hydraulic pump (preset at 2,500 psi) — Provides 12,000 lbs. of downward force.
- Ram Guard — Covers the top of drum/prevents any possible hand injuries. Microswitch prevents use of compactor until cover is shut.
- Safety interlock — Compactor will not run unless frame is locked into the upright position.
- Manually operated on/off air valve — Unit will not operate unless the valve is depressed. When valve is released, compactor shuts off.
- Tilt-back frame — Allows drum to be filled with materials without having to move drum away from compactor.
- Raised aluminum base plate — Centers the drum under the ram, plus it prevents the bottom of the drum from bowing under compaction force.
- View port on ram guard — Allows the user to view compacting ram and any liquids that may accumulate.
- Holes drilled in base plate — Allows unit to be mounted to floor. Floor anchoring is not required.
- Drain holes in ram plate — Allows liquids to rise to the top when compacting.
- Retaining pin — Keeps drum located and secure underneath ram.
- Compactor includes an attached grounding wire — Allows user to ground unit for added safety.
- Includes air line filter — Removes water from air line and extends the life of the pump.

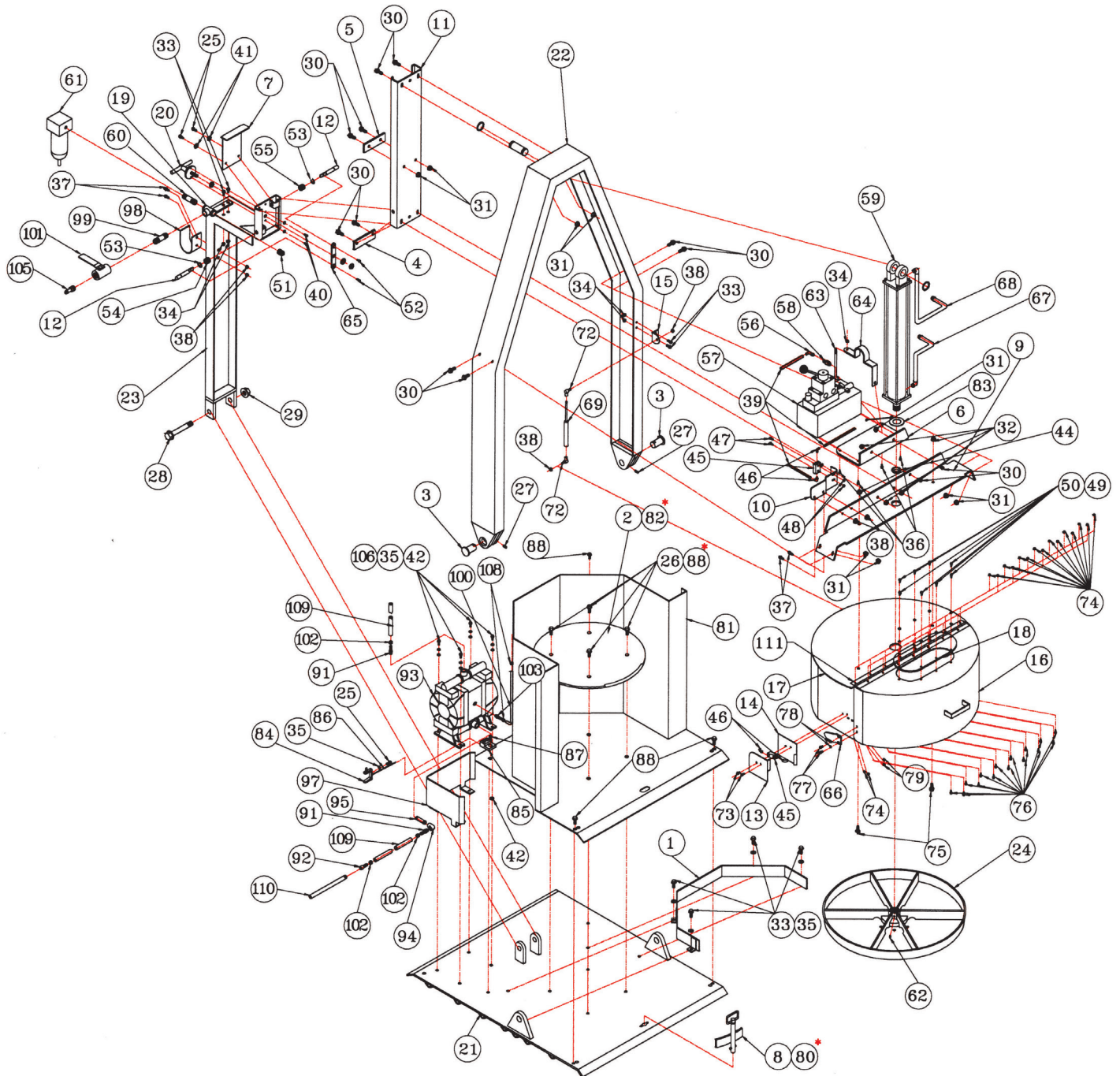
APPLICATIONS

To assist in waste minimization, the PIG Waste Compactor allows the user to fit more soft waste in each disposal drum.

****IMPORTANT:** It is the user’s responsibility to ensure waste entered into drum will not generate a spark by itself, or by coming in contact with the drum.

4 Exploded View

PIG Waste Compactor — DRM655



5 Parts List

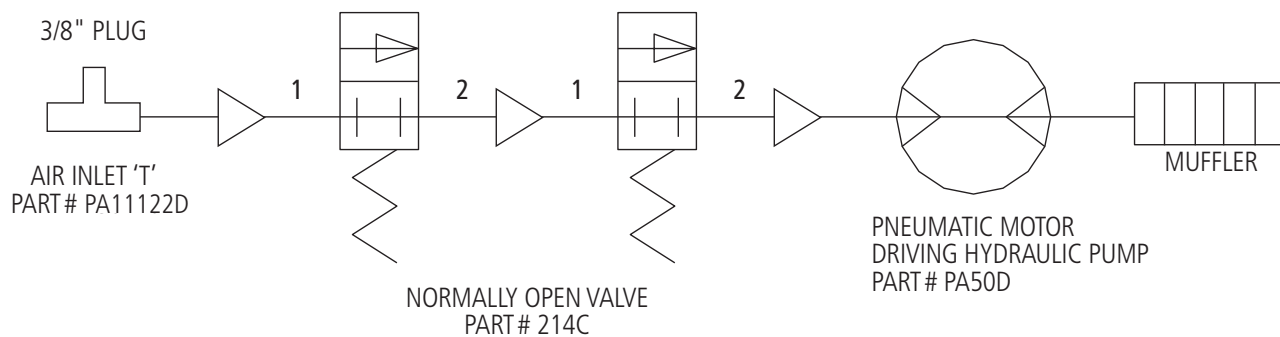
PIG Waste Compactor — DRM655

Item No.	PART No.	DESCRIPTION	UM	QUANTITY
1	150122	CENTER SUPPORT	EA	1
2	150123	BASE PLATE	EA	1
3	150125	A-FRAME	EA	1
4	150133	MICRO SWITCH MOUNT	EA	1
5	150134	BOTTOM STOP PLATE	EA	1
6	150135	PUMP MOUNT BRACKET	EA	1
7	150137	TOP STOP PLATE	EA	1
8	150138	LATCH COVER	EA	1
9	150140	REAR PIVOT SUPPORT	EA	1
10	150141	HINGE PIN	EA	2
11	150142	LATCH PIN	EA	2
12	150143	PIVOT BAR	EA	1
13	155186	GARLOC #20FDU16 BUSHING	EA	1
14	600087	ALUMINUM DOME	EA	1
15	600103	LOCATING PIN (ASSEMBLY)	EA	1
16	600104	NON SPARK KIT (ASSEMBLY)	EA	1
17	1169X45	SWIVEL MALE ELBOW	EA	4
18	1169X4X6S	SWIVEL MALE ELBOW	EA	1
19	150132-4	PLEXIGLASS SIGHT WINDOW	EA	1
20	150135-1	AIR PUMP CLAMP	EA	1
21	150139A	TILT GUIDE WELD ASSY.	EA	1
22	214C	ARO AIR VALVE #214C	EA	2
23	600104-3	NO SPARK KIT (PLATE)	EA	1
24	600107-1	NO SPARK COMPTR.(WASHER)	EA	1
25	600143-10	CSA DOME COVER HINGE	EA	1
26	600143-6	CSA DOME COVER SHOCK BRKT.	EA	1
27	600143A	CSA DOME COVER,FRONT ASSY	EA	1
28	600143B	CSA DOME COVER WELD ASSY	EA	1
29	600150-1	CSA-AIR SWITCH ACTIVATOR	EA	1
30	600150-2	CSA AIR SWITCH COVER	EA	1
31	600150-3	CSA INNER SWITCH GUARD	EA	1
32	9903SPCM	COMPACTOR MANUAL	EA	1
33	DRM316A1-1	HANDLE ASSEMBLY	EA	1
34	DRM316A1-2	CLIP PIN	EA	2
35	DRM316A1-5	HEAVY SPRING WIRE .06 DIA	EA	1
36	DRM345-21	PUMP LEG SPACER	EA	1
37	F1031	#8-32 HEX HD NUT W/WASHER	EA	2
38	F1032	#8-32X1.0 RD HD SL MACH SCREW	EA	2
39	F1036	#8-32X1-1/2 RD HD SL MACH SCW	EA	2
40	F1038	#8-32 NYLON INSERT LOCK NUT	EA	17

Item No.	PART No.	DESCRIPTION	UM	QUANTITY
41	F1039	#8-32X1/2 RD HD SL MACH SCREW	EA	15
42	F1048	#10-32X3/8 BUTTON HD SCREW	EA	2
43	F1049	#10X1.0 HEX WASHER HEAD AB SCW	EA	4
44	F1054	#10 FLAT WASHER .640X.203X.060	EA	2
45	F1065	#10-24X5/8 RD HD SL MACH SCW	EA	2
46	F1152	1/4-20 CENTER HEX LOCK NUT	EA	4
47	F1158	1/4-20X1/2 SOCKET SET SCREW	EA	2
48	F1159	1/4-20X1/2 HEX HD CAP SCREW	EA	3
49	F1191	1/4-20X3/8 SOCKET SET SCREW	EA	1
50	F1198	1/4-20 HEX NUT ZINC	EA	1
51	F1199	1/4-20X3/4 HEX HD CAP SCREW	EA	4
52	F1200	1/4 EXTERNAL STAR LOCK WASHER	EA	2
53	F1204	#10-32X1/4DX3/16L SHOULDER SCW	EA	2
54	F1219	1/4-20X1.0 HEX HD CAP SCREW	EA	1
55	F1220	1/4-20X1.0 SKT HD FLAT CAP SCW	EA	7
56	F1304	5/16-18X1 STL BTN SKT CP SCR	EA	4
57	F1306	5/16-18 NYLOK NUT	EA	4
58	F1311	5/16X.0688OD FLAT WASHER	EA	4
59	F1312	5/16-18 HEX LOCK NUT (CENTER)	EA	4
60	F1316	1/2" MED DTY TUBE CLAMP	EA	4
61	F1317	5/16-18X1 STL BTN HD SKT HD SC	EA	4
62	F1318	5/16-18 GR 5 NYLOK FLG NUT	EA	4
63	F1338	5/16-18X3/4 HEX SER FLANGE SCW	EA	2
64	F1339	5/16-18 HEX HD SER FLANGE NUT	EA	4
65	F1421	3/8-16 HEX HEAD WHIZ LCK NUT	EA	2
66	F1425	3/8-16X1.0 HEX HD FLANGE BOLT	EA	12
67	F1426	3/8-16 HEX HEAD FLANGE NUT	EA	12
68	F1459	3/8X2-1/12 HEX HD LAG BOLT	EA	4
69	F1468	3/8-16X3/4 CARRIAGE BOLT	EA	2
70	F1654	3/4-10X6.0 HEX HD CAP SCW	EA	1
71	F1655	3/4-10 HEX HD LOCK NUT	EA	1
72	F1722	#10-24HEX HD LOCK NUT YW ZNC	EA	2
73	F1914	3/16 DIA X.282 POP RIVET	EA	1
74	F1922	3/8X3/8 PLASTIC BINDING SCREW	EA	8
75	F1923	1/4 NYLON FLAT WASHER	EA	8
76	F1938	3/8 NPT X 1-1/2 MALE NIPPLE	EA	1
77	H42508X16	HYDRAULIC HOSE WITH FITTINGS	EA	1
78	H42508X24	HYDRAULIC HOSE WITH FITTINGS	EA	1
79	I113	AIR PUMP DECAL	EA	1
80	I114	UP DOWN DECAL	EA	1
81	I115	FILL DECAL	EA	1
82	I122	HANDS CLEAR DECAL	EA	3
83	I143	SERIAL NUMBER DECAL REV A	EA	1
84	I146	AIR SUPPLY DECAL	EA	1
85	I171	DO NOT STACK DECAL	EA	4
86	I190	EARTH GROUND DECAL	EA	1
87	I305	MODEL NUMBER DECAL	EA	1

Item No.	PART No.	DESCRIPTION	UM	QUANTITY
88	I360	DRM655/656 PRODUCT DECAL	EA	2
89	N11-417B	1/4OD P.E. TUBE - BLACK	FT	7
90	P1015	HYDRAULIC CYLINDER	EA	1
91	P1032	NYLON WIRE TIES	EA	6
92	P1087	RING TERMINAL	EA	1
93	P1090	TAPPED BEAM CLAMP	EA	1
94	P1091	WIRE TERM LUG	EA	1
95	P1092	STRND CU WIRE GREEN	FT	6.6667
96	P1105	COMPRESSION SPRING	EA	1
97	P1108	HYDRAULIC FLUID	GL	0.5
98	P1151	FIXED FORCE GAS SPRING	EA	1
99	P1154	BALL STUD	EA	2
100	P1284	1/4 FIL/REG/LUB, 15CFM	EA	1
101	P2344	MALE CONNECTOR	EA	1
102	P2372	RING TERMINAL NONINSULATED	EA	2
103	PA11122D	AIR HYDRAULIC PUMP	EA	1
104	PA11122D-FP	FOOT PEDAL FOR PA11122D PUMP	EA	1
105	S30	HEAT TREATED COMPACTOR PALLET	EA	1
106	S74	CARDBOARD CARTON 125#C	EA	1
107	S75	WOODEN SLATS	EA	4
108	V10249	COMPACTOR AIR FILTER BRKT.	EA	1

6 Air Schematics



7 Preventive Maintenance

1. Clean Bowl Filter — Keep air dry
2. Add a small amount of air tool oil or lightweight machine oil to air line.
Note: An automatic filter/lubricator/oiler may be added to the air line on the unit, but do not over-oil.
3. Check hydraulic oil level. Should be within approximately 1" from top of filler hole. Use a general-purpose mediumweight hydraulic fluid.
4. Check for loose nuts, bolts and pins.
5. Check Ram Plate to ensure that it is secured to the hydraulic cylinder shaft. Run unit empty to full extension of the hydraulic cylinder. Allow the unit to build full pressure, this will lock the cylinder in place so that it can be tightened or removed. Caution — Loosen set screw before attempting to tighten or remove ram plate.

8 Troubleshooting Guide

Hydraulic pump runs, but ram will not move.

- a. Low air pressure — Air pressure should be between 80 psi and 120 psi.
- b. Hydraulic fluid is low — Use a mediumweight hydraulic fluid and fill to within 1" of the top of filler hole with the ram in the up position.
- c. Water and dirt in the air supply — Drain water and clean filter bowl. Add a small amount of air tool oil or lightweight machine oil to the air line.
- d. Up and down lever is not fully engaged — Make sure lever is moved completely to the up or down position.
- e. Breather cap on the hydraulic pump is closed — Open cap.

Waste pump runs, but will not pump.

- f. Check hoses for obstructions.
- g. Check filter screen and clean.

Pump will not run.

- h. Check air supply.
- i. Add a small amount of air tool oil or lightweight machine oil to the air line.

Hydraulic pump will not run.

- j. Check air supply — Air pressure to unit should be between 80 psi and 120 psi.
- k. Water and dirt in the air supply — Drain water and clean filter bowl. Add a small amount of air tool oil or lightweight machine oil to the air line.
- l. Safety cover micro is not fully engaged — Make sure it is fully closed.
- m. Safety cover micro is out of alignment — Adjust micro so it is fully engaged when cover is in the closed position.
- n. Tilt micro is not fully engaged — Make sure the compactor is in the upright position and the locking pins are fully extended and depressing the micro.
- o. Tilt micro is out of alignment — Adjust micro so it is fully depressed when compactor is in the upright position and the locking pins are fully extended.

Loose Ram Plate

- p. Ram plate is loose — Run the compactor empty to full extension of hydraulic cylinder. Allow unit to build full pressure, this will lock the cylinder in place so it can be tightened or removed.

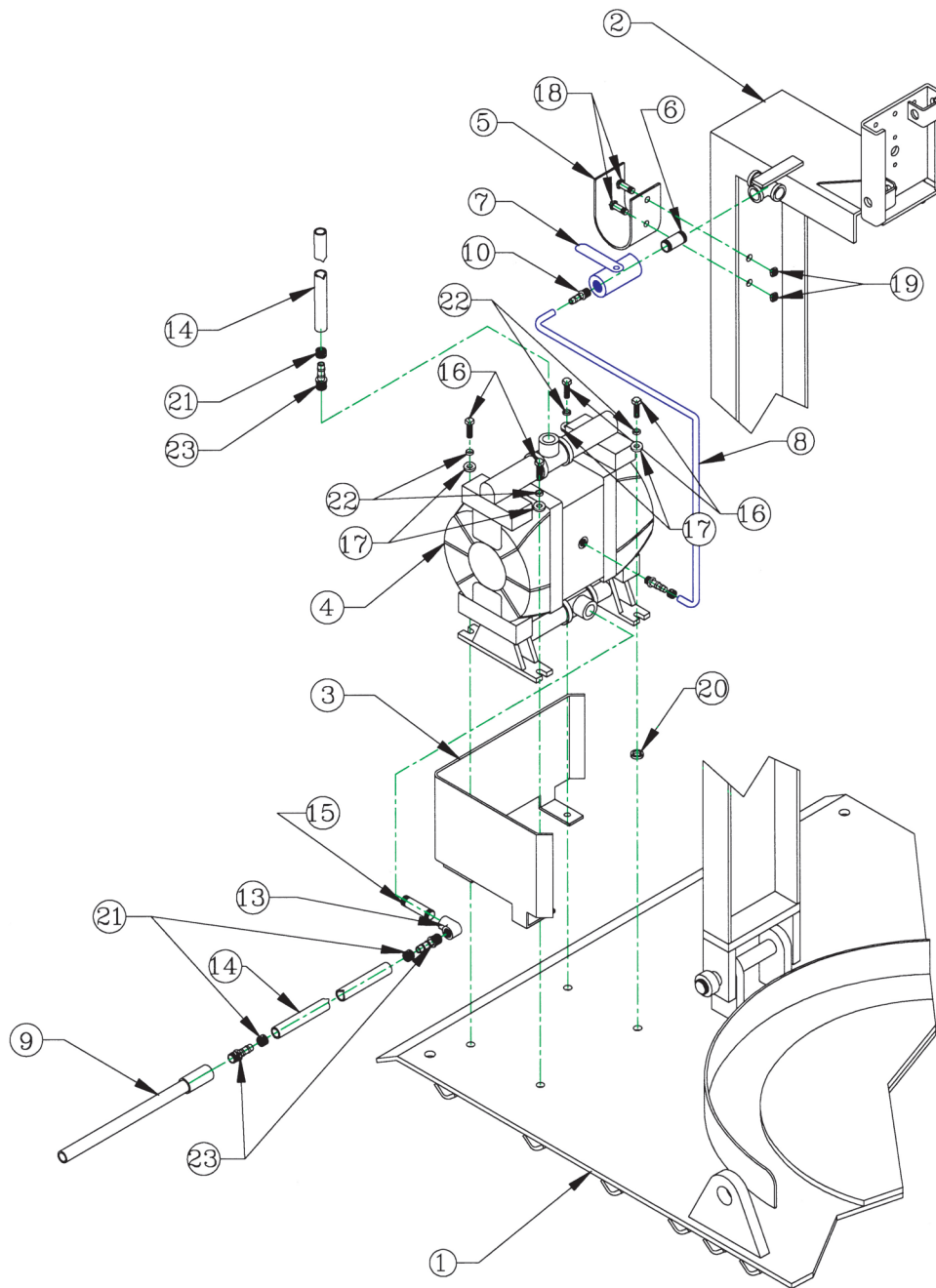
CAUTION: Loosen set screw before attempting to tighten or remove ram plate.

Pump Kit for PIG Waste Compactor

Waste Pump Assembly

Item# DRM345

1 Optional Waste Pump



5 Parts List

Waste Pump Parts List – DRM345

Item No.	Part No.	Description	DRM652 Quantity
1	150123	Base Plate	1
2	150140	Rear Pivot	1
3	150150	Pump Guard	1
4	P1239	Diaphragm Pump	1
5	150146	Hose	1
6	F1938	3/8" x 1 1/2" Pipe Nipple	1
7	A116-6	3/8" Ball Valve	1
8	N11-417B	1/4" Black Tubing	4'
9	DRM345-9	1/2" x 18" PVC Pipe	1
10	1169x4S	Swivel Male Elbow	1
13	F1946	1/2" 90 Deg. PVC Elbow	1
14	F1947	5/8" x 7' Clear Hose	2
15	F1948	1/2" x 3" PVC Pipe Nipple	1
16	F1184	1/4" -20UNC x 1" Hex Head Bolt	4
17	F1196	1/4" Flat Washer	4
18	F1338	5/16" -18UNC x 3/4" Hex Head Flange Bolt	2
19	F1339	5/16" -18UNC Hex Head Flange Nut	2
20	DRM345-21	Spacer	1
21	F1949	5/8" Hose Clamp	3
22	F1164	1/4" Lock Washer	4
23	F1943	1/2" Pipe x 5/8" Hose Barb	3

Limited Warranty

Congratulations on your recent purchase of a quality New Pig Corporation product. We are confident that our product will perform well and are pleased to provide you (the Original Retail Purchaser) with this Limited Warranty valid for one year from the original purchase date. Remember to keep proof of your purchase date.

FOR SERVICE OR QUESTIONS CALL 1-800-HOT-HOGS®

LIMITED WARRANTY

New Pig Corporation warrants to the Original Retail Purchaser that the enumerated products are free from mechanical or electrical defects in materials and workmanship. This LIMITED WARRANTY is only valid if the Original Retail Purchaser notifies New Pig Corporation within one (1) year (the "Warranty Period") of the original retail purchase. This LIMITED WARRANTY only applies to the following enumerated products. New Pig Corporation shall, at its sole discretion, repair the product or replace it with a product of comparable value. New Pig Corporation may require the Original Retail Purchaser to return the product to New Pig Corporation at the Original Retail Purchaser's expense. For notification or questions, call 1-800-HOT-HOGS®. You may also write Customer Service, ATTN: Warranty Service, New Pig Corporation, One Pork Avenue, Tipton, PA 16684-0304. You must maintain proof of purchase of the product to prove the date of purchase.

THIS LIMITED WARRANTY DOES NOT COVER NORMAL WEAR AND TEAR, DAMAGE RESULTING FROM NEGLIGENT USE, DAMAGE FROM MISUSE OF THE PRODUCT, USE OF IMPROPER CURRENT OR VOLTAGE, ANY USE NOT IN ACCORDANCE WITH THE OPERATION MANUAL, GLASS BREAKAGE (IF APPLICABLE), DISASSEMBLY, REPAIR OR ALTERATION BY ANY PERSON NOT SPECIFICALLY AUTHORIZED BY NEW PIG CORPORATION.

THE REMEDIES PROVIDED IN THIS LIMITED WARRANTY ARE THE SOLE AND EXCLUSIVE REMEDIES AVAILABLE TO YOU. NO OTHER EXPRESS WARRANTIES ARE MADE. ALL IMPLIED WARRANTIES, INCLUDING BUT NOT LIMITED TO ANY IMPLIED WARRANTY OF MERCHANTABILITY OR FITNESS FOR A PARTICULAR PURPOSE OF USE, ARE EXCLUDED. IN NO EVENT SHALL NEW PIG CORPORATION BE LIABLE FOR ANY INCIDENTAL OR CONSEQUENTIAL DAMAGES. IN NO EVENT SHALL NEW PIG CORPORATION'S LIABILITY EXCEED THE ORIGINAL PURCHASE PRICE OF THE PRODUCT WHICH IS THE SUBJECT OF PROPER NOTICE OF DEFECTS. IF THE ORIGINAL RETAIL PURCHASER FAILS TO NOTIFY THE NEW PIG CORPORATION OF ANY DEFECTS, WHETHER PATENT OR LATENT, WITHIN THE WARRANTY PERIOD, NEW PIG CORPORATION SHALL HAVE NO FURTHER LIABILITY OR OBLIGATION.

SOME STATES AND PROVINCES DO NOT ALLOW LIMITATIONS ON HOW LONG AN IMPLIED WARRANTY LASTS OR DO NOT ALLOW THE EXCLUSION OR LIMITATION OF INCIDENTAL OR CONSEQUENTIAL DAMAGES, SO THE ABOVE LIMITATIONS MAY NOT APPLY TO YOU.