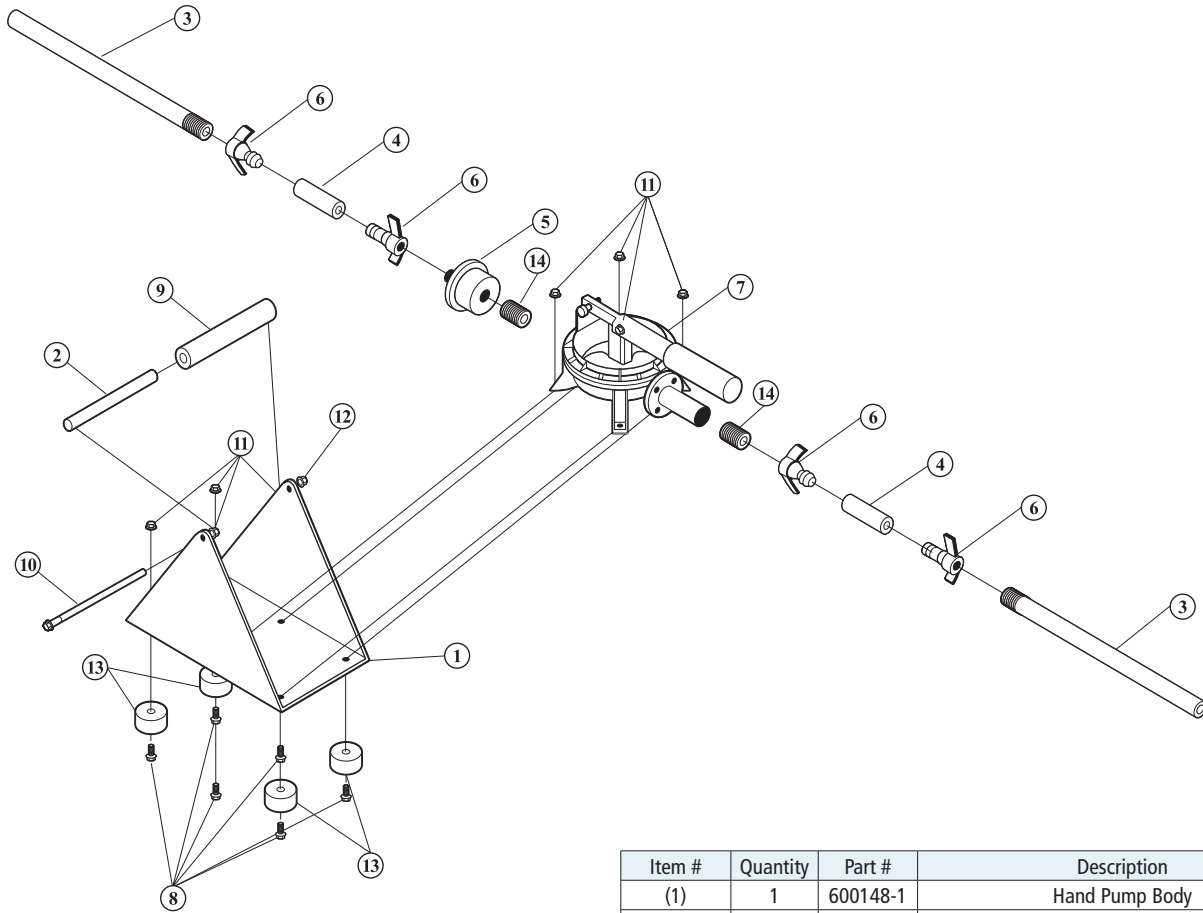


# Manual Pump Kit

## Hand Pump-Out Kit (DRM635)



### Read and observe this warning

1. Do not use this product except for pumping or transferring water or water-based liquids.
2. Inspect the appearance and operation of this product before installation and bimonthly thereafter. Report defects immediately.
3. Serious and potentially dangerous product degradation will result from exposure to acids, prolonged sunlight or temperatures above 150°F.
4. Replace worn or broken parts with factory replacements only.
5. Lubricate moving parts with keystone silicone grease.

Item #	Quantity	Part #	Description
(1)	1	600148-1	Hand Pump Body
(2)	1	600148-2	Body Handle
(3)	2	600148-3	Plastic Wand
(4)	2	P1085	1/2" x 7' Long Clear PVC Tubing
(5)	1	P1109	Shurflo Filter
(6)	4	P1110	Shurflo 1/2" Wingnut with 1/2" Hose Barb
(7)	1	P1147	1.0" Viton Guzzler Hand Pump
(8)	6	P1151	1/4" - 20 UNC x 7/8"
(9)	6"	P1144	1/4" Foam Padding
(10)	1	F1228	1/4" - 20 UNC x 6" Hex Head Fully Threaded Bolt
(11)	8	F1229	1/4" - 20 UNC Hex Jam Nut
(12)	1	F1230	1/4" - 20 UNC Hex Acorn Nut
(13)	4	P1145	Protective Rubber Bumper
(14)	2	P1140	Plastic 1/2" Closed Nipple
Not Shown	1	S102	Waxed Box with Handle
Not Shown	1	I216	'Pump Kit' Decal



**New Pig**

One Pork Avenue  
Tipton, PA 16684-0304

**newpig.com**

North America: **1-800-468-4647**

Europe: **+31 (0)76 596 92 50**

China: **+86-21-400 921 5178**

PIG, PIG logo are registered trademarks in USA and other countries. See [tm.newpig.com](http://tm.newpig.com)

UK: **0800 919 900**

Outside North America: **+1-814-684-0101**

502429 / 351774